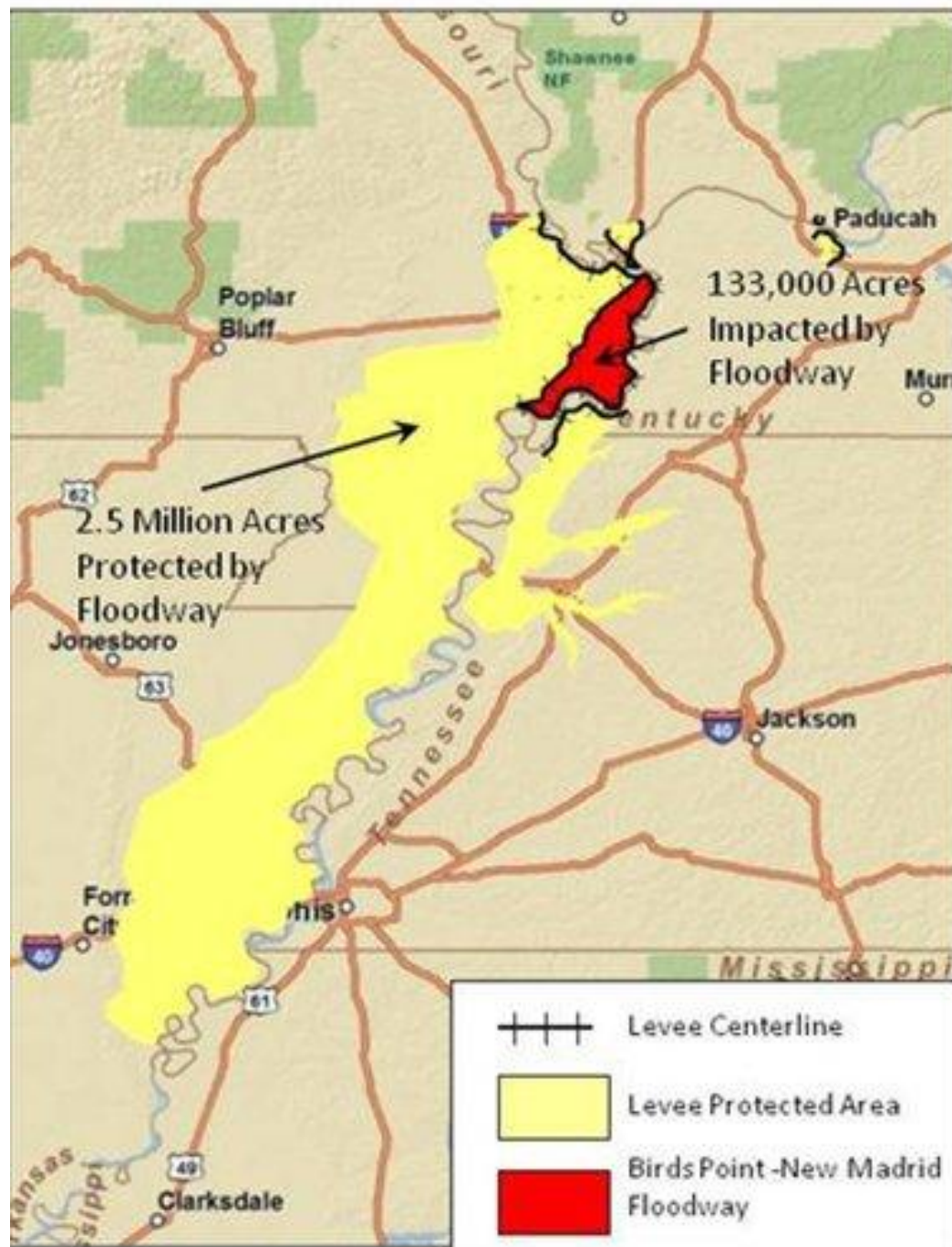


# **2011 Flood pictures**

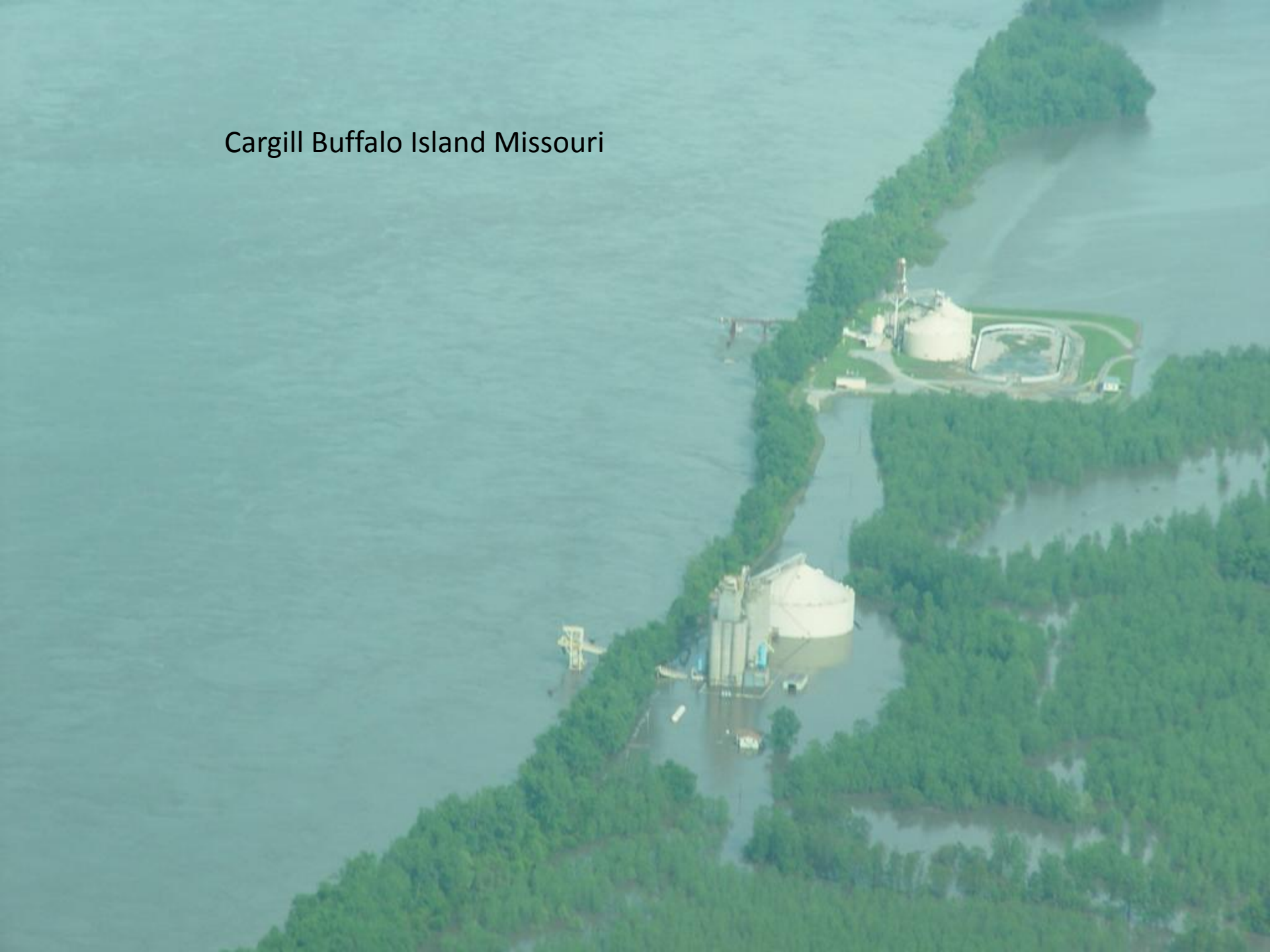
**Cairo to Osceola**



# Current status going into wheat harvest

- North to South
- Cargill - Buffalo Island, elevator A is out, other plant is ok, expect all wheat to truck back to Sikeston
- ADM - Mound City, ok
- CGB - Birds Pt, extreme water issues, doubtful for wheat harvest
- Cargill/Bunge – Hickman, ok
- CGB – Dorena, sits between both levee breaches should be out for wheat and possibly fall harvest
- Cargill/ADM - New Madrid, both ok
- Bunge – Linda, looks like they will be out for wheat harvest, possibly fall harvest
- CGB/Bunge – Caruthersville, CGB ok, Bunge should have big issues, guess wheat goes to ADM New Madrid or Booths Point Bunge facility, we have the advantage with high speed unload
- Bunge – Booths Point, ok
- Bunge – Heloise, ok
- CGB - Cottonwood Pt, ok
- Bunge - Huffman Elevator - Blytheville, Arkansas, expect problems
- Cargill Hales Pt we didn't get this elevator
- Bunge - Hughes Soybean concrete elevator, closed?
- Bunge – Osceola on the river they have problems, but inland is ok
- Poinsett/CGB – Osceola, problems, but not much there to get up and going, might miss wheat harvest, good for Memphis
- ADM – Dudley , ok
- ADM – Livingston Pt, should be ok

# Cargill Buffalo Island Missouri







ADM Mound City Illinois













CGB - Mound City, Illinois



ADM & CGB Mound City, Illinois





CGB – Birds Point, Missouri



Mississippi River at upper levee break Birds Point







CGB - Dorena Missouri









Cargill – Hickman, Kentucky





Bunge – Hickman, Kentucky



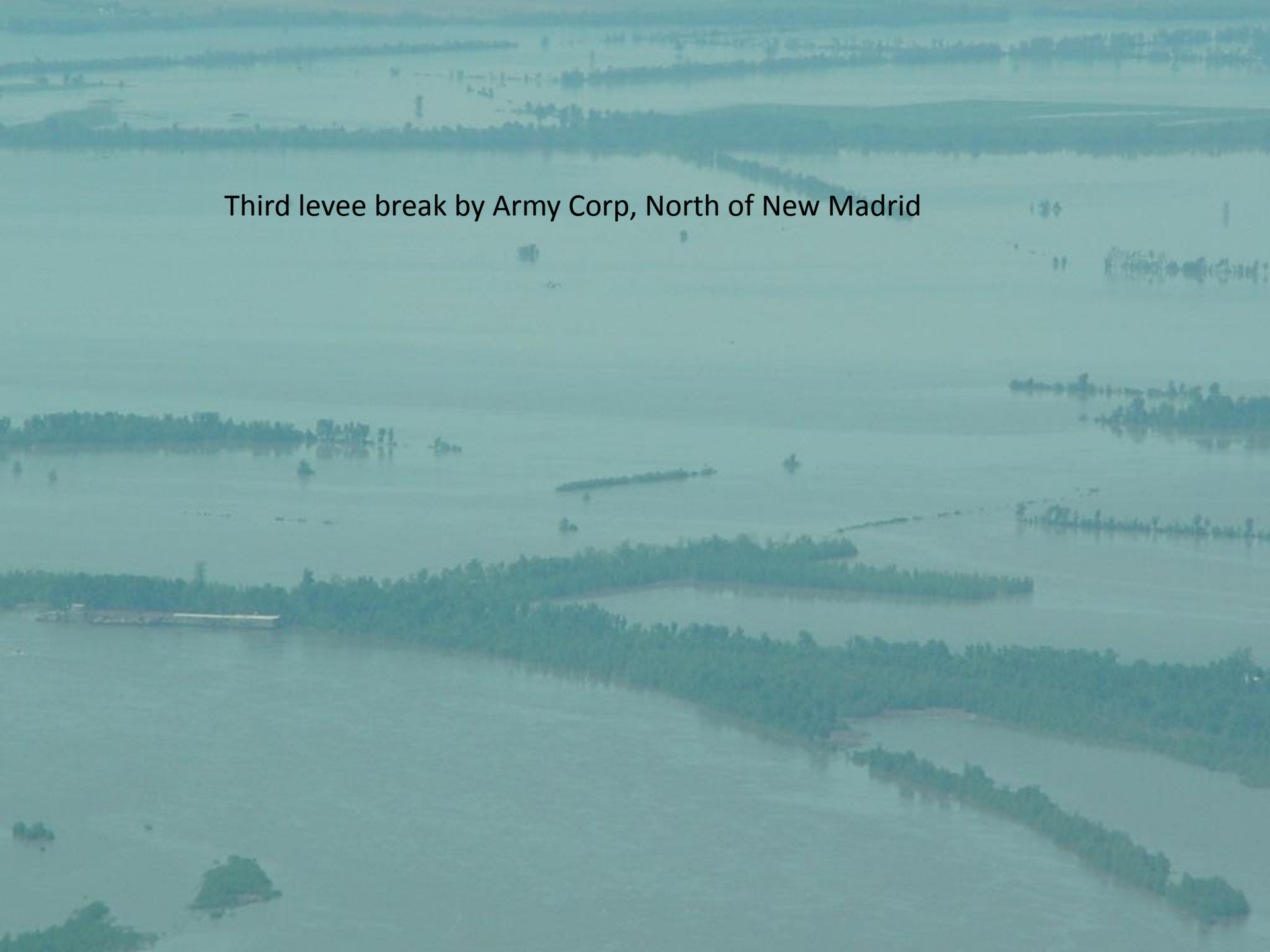


Bunge – Hickman, Kentucky





Third levee break by Army Corp, North of New Madrid





North of New Madrid flood plain



New Madrid Missouri looking West at flood area



Cargill – New Madrid, Missouri











New Madrid looking up river at levee breach and flood plain



ADM – New Madrid, Missouri



















Bunge – Linda, Missouri







CGB – Caruthersville, Missouri







Bunge – Caruthersville, Missouri





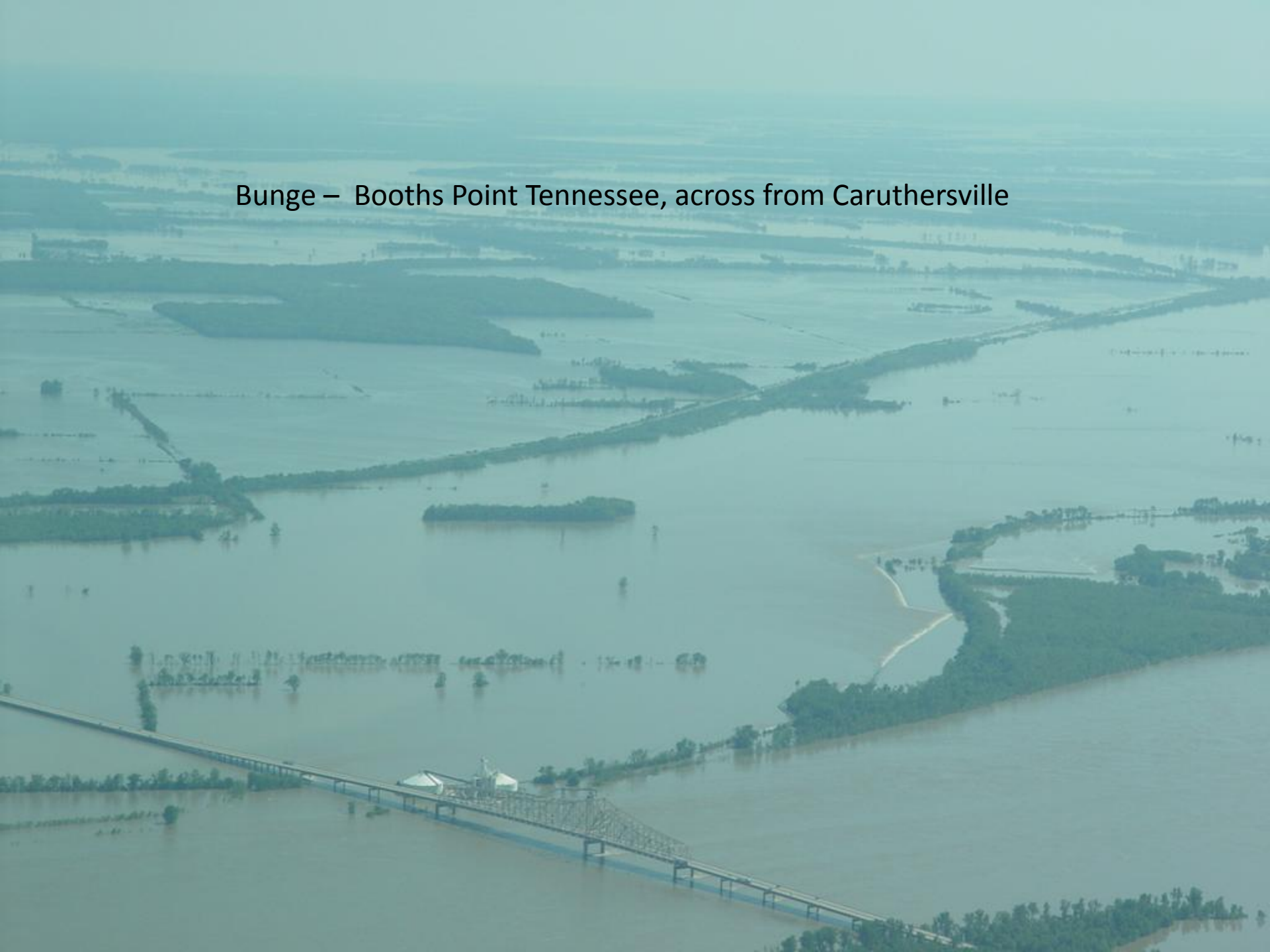








Bunge – Booths Point Tennessee, across from Caruthersville









CGB – Cottonwood, Missouri





Bunge – Heloise, Tenn, South of Dyersburg





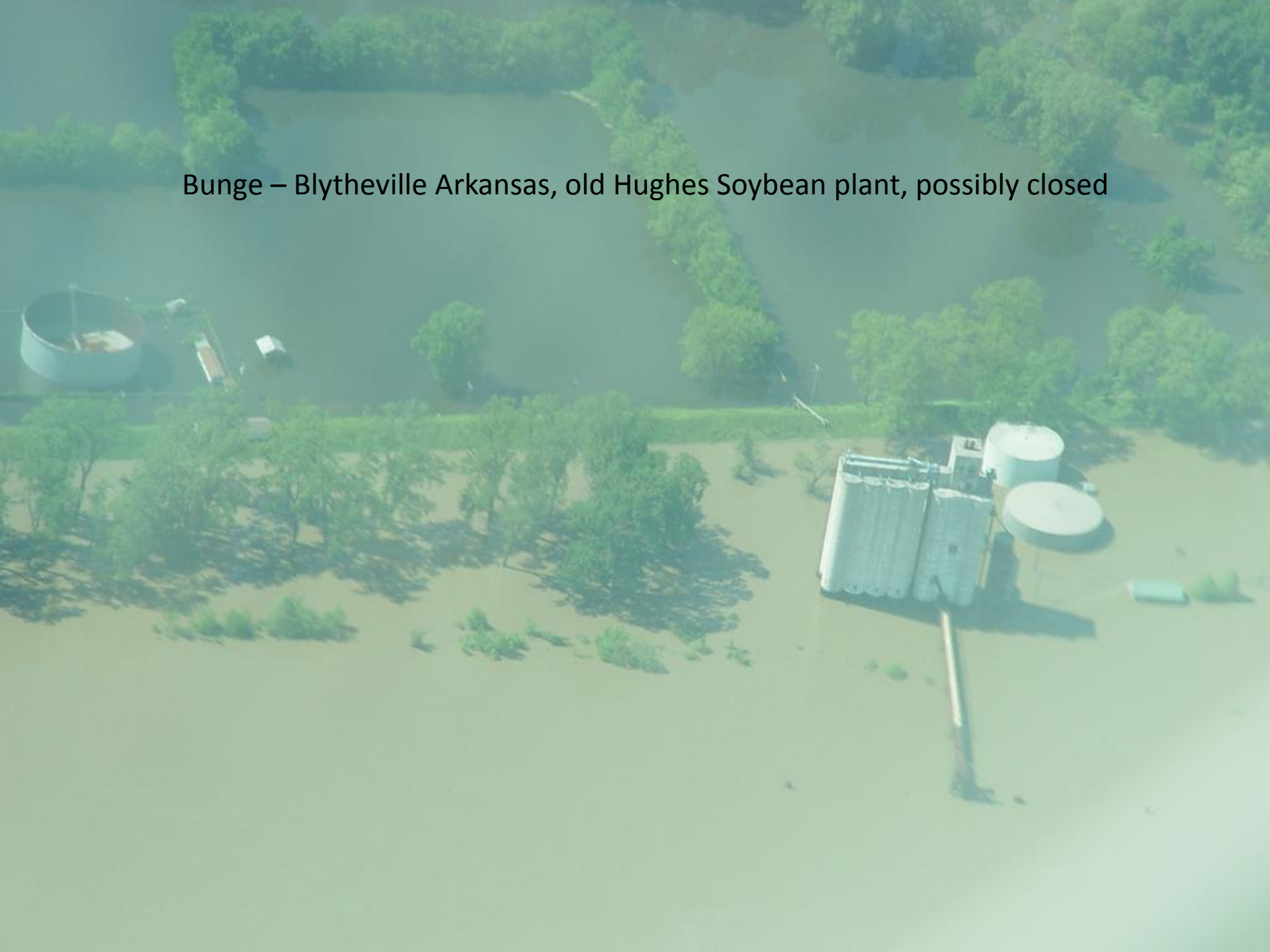


Bunge – Blytheville, Arkansas – Huffman elevator





Bunge – Blytheville Arkansas, old Hughes Soybean plant, possibly closed



Bunge – Osceola, Arkansas





Bunge – Osceola Arkansas, next door to river operation



CGB – Poinsett Rice Osceola, Arkansas





ADM –Dudley, Missouri





St Francis River flooding back toward Dudley, from Wappapello Lake





ADM – Livingston Pt, Ky



