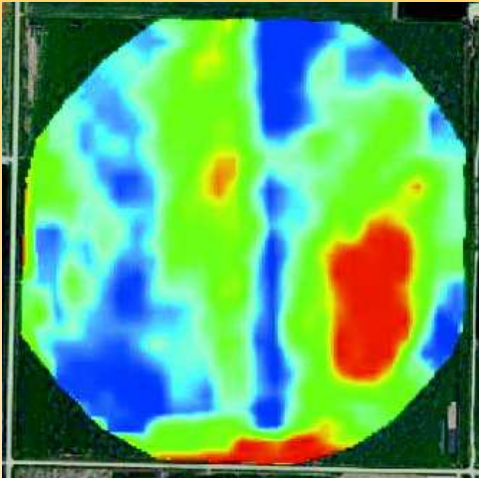


Variable Rate Technology (VRT)

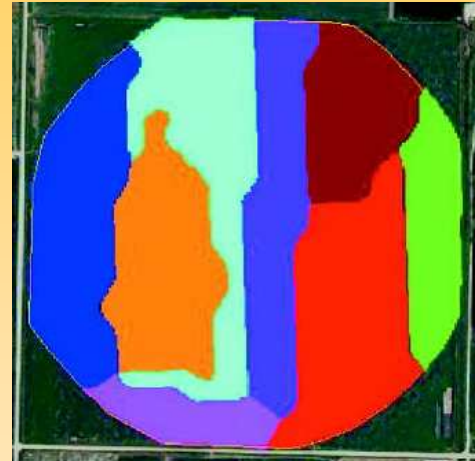
Now you have **Two Ways** to use
Variable Rate Technology (VRT).
By using either VRN and/or SaMZ
you will be able to improve your yields

VRN (Variable Rate Nitrogen)



VRN - Yield Potential Maps (YPM) are yield maps that are derived from satellite images that measure biomass (green color) to determine yield estimates. These images are taken every year and can change on a year to year basis due to environmental changes (flooded areas, drought conditions, etc). When comparing these images to an actual harvested yield map, there is an 85-95% correlation. Because yield has a direct correlation with biomass in grass crops (corn or wheat), these images can be used to determine yield. The more biomass in an area; the higher the yield potential is for that given location. **Note: these images do not work to estimate yield on non grass crops (soybeans or alfalfa).**

SaMZ (Satellite Derived Management Zones)



SaMZ are zone maps that are derived from many different images that are compared to each other and then normalized to develop distinct zones that are present in a given field. These maps may take into account 10 -15 years of YPM, soil organic matter maps, soil maps, etc. These maps DO NOT change on a year to year basis, and can be used to pull soil samples for 5-7 years. They work to determine zones on any type of crop whether it is grass or legume.

Note: These maps do not determine yield estimates, they only determine differences in a field and need soil samples taken from each zone to aid in fertility recommendations.

For more Information contact any UFC Rep below:

Thad Russell	-Hampton, NE	402-604-0408
Cary Skibinski	-Tamora, NE	402-764-0089
Andy Bowman	-Benedict, NE	402-710-0118