

# One 710,000-Bushel Tank

INDIANA GRAIN HANDLER FIGHTS GROUND PILES, LONG TRUCK LINES



## Frick Services Inc.

Wawaka, IN • 260-761-3311

**Founded:** 1918

**Storage capacity:** 3.8 million bushels at three locations

**Annual volume:** 6-7 million bushels

**Annual sales:** \$70 million

**Number of employees:** 80

**Crops handled:** Corn, soybeans, soft red winter wheat

**Services:** Grain handling and merchandising, agronomy, precision farming services

## Key personnel:

- Daniel Frick, vice president
- Matt Getts, facility manager
- Jerry Ensh, grain superintendent
- Cindy Jacob, grain accountant

## Supplier List

**Aeration fans** ..... Sukup Mfg. Co.

**Bin sweep** ..... Hall Industries

**Bucket elevator** ..... Union Iron Works

**Catwalks** ..... LeMar Industries Corp., Johnson System Inc.

**Cleaner** ..... InterSystems Inc.

**Contractor** ..... Divine Power Inc.

**Conveyors** ..... The Essmuller Co.

**Distributor** ... The Essmuller Co.

**Elevator buckets** ..... Tapco Inc.

**Grain dryer** ..... Sukup Mfg. Co.

**Millwright** ..... Divine Power Inc.

**Speed reducers** ..... Dodge

**Steel storage** ..... Sukup Mfg. Co.

**Tower support system** .. Johnson System Inc.



*New 710,000-bushel Sukup steel storage tank installed in 2006 at Frick Services Inc.'s headquarters grain elevator in Wawaka, IN. Photos by Ed Zdrojewski.*

When Frick Services Inc. decided to add a huge 710,000-bushel steel storage tank at its headquarters elevator in Wawaka, IN, two issues drove the decision, says Vice President Daniel Frick.

"We had limited storage space here, and we had been piling corn on the ground for the last three years," he says. "We also didn't have enough receiving capacity. The truck lines were getting way too long at harvest."

Frick, who has been with the family-

owned company for his entire 32-year career, says that once the company tore down an old shop building that was no longer in use, there was plenty of room to add more grain storage and handling equipment. That portion of the company's property had to be rezoned from residential to industrial, but that proved to be no obstacle.

Once that was resolved, the company opted to install a new 710,000-bushel Sukup corrugated steel tank plus a new re-

ceiving pit with a 15,000-bph Union Iron Works leg.

"We wanted the Sukup product because of the strength of the tank," Frick says, who adds that Sukup, in turn, recommended the millwright firm Divine Power Inc. Shepherd, MI (989-828-5093), as contractor on the project.

Construction on the project got underway in June 2006, and everything was completed by September. Cost of the project is confidential.

### Storage Expansion

The new Sukup tank stands 105 feet in diameter, 88 feet tall at the eaves, and 120 feet tall at the peak. The tank has outside stiffeners and a 12-inch Hall Industries sweep auger, but at this point has no grain temperature monitoring system or level indicators.

A set of four 30-hp Sukup centrifugal fans provide 1/10 cfm per bushel of aeration, with the assistance of four 2-hp roof exhausters.



*Daniel Frick*

To the north of the new tank, Divine Power installed a new 600-bushel mechanical receiving pit, which feeds a 15,000-bph Union Iron Works leg. The leg is outfitted with 18x8 Tapco heavy-duty buckets mounted on a 20-inch belt. The leg is supported by an 8-foot-x-10-foot Johnson System

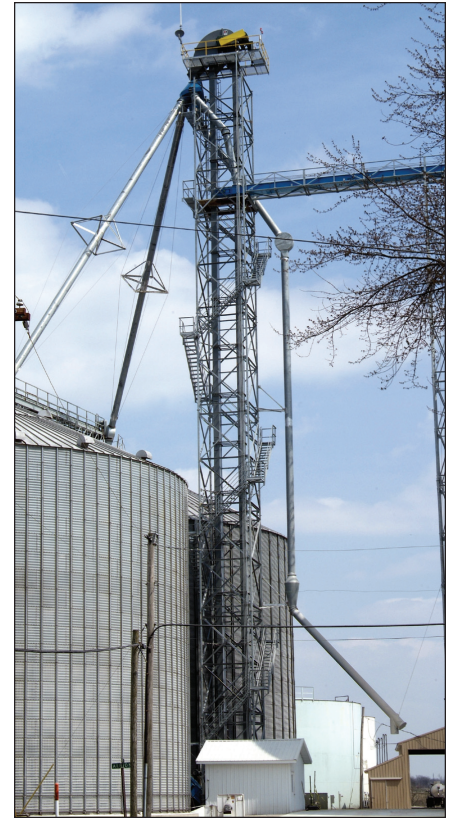
tower with wraparound staircase.

The new leg deposits grain into a four-hole Essmueller distributor. One hole leads to an overhead 15,000-bph Essmueller drag conveyor running out to the new tank. Two other holes run to existing storage or conveyors, while the fourth drops down to a truck loading station.

The new tank unloads onto a 15,000-bph Essmueller drag conveyor in a below-ground tunnel, which runs back to the new leg.

"So far, everything has worked well," Frick comments. "It's made a significant difference in our ability to serve the growers."

*Ed Zdrojewski, editor*



*New 15,000-bph UIW leg feeds an Essmueller distributor and overhead Essmueller drag conveyor running out to new storage, as well as existing facilities.*

*Reprinted from the May/June 2007 Issue of Grain Journal.*