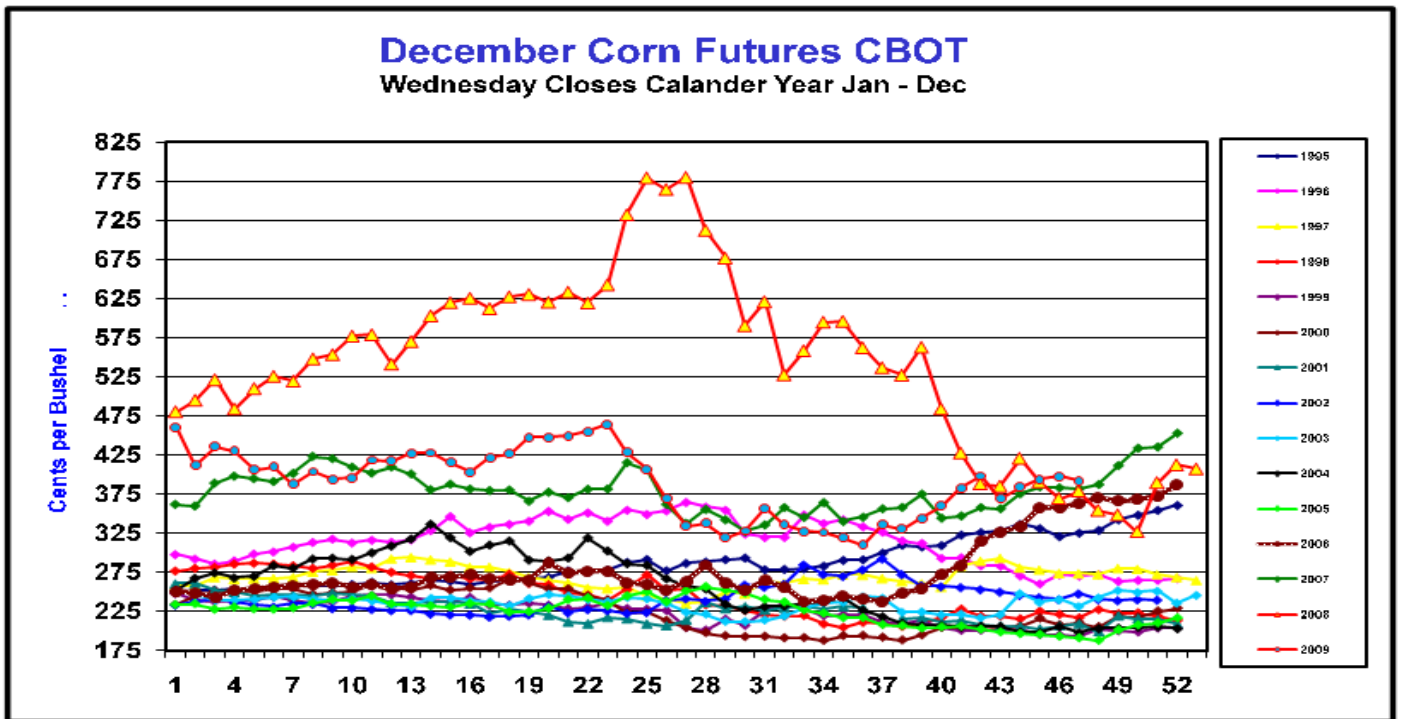
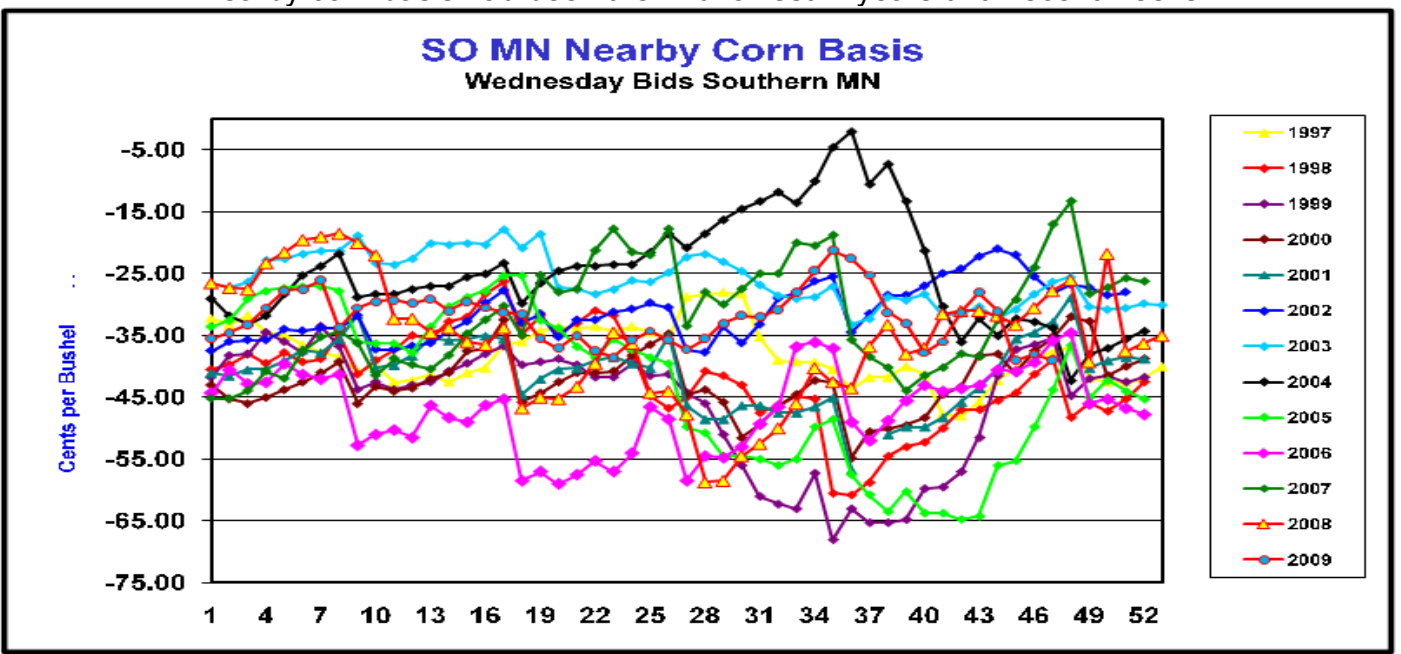


Futures, Cash & Basis Charts

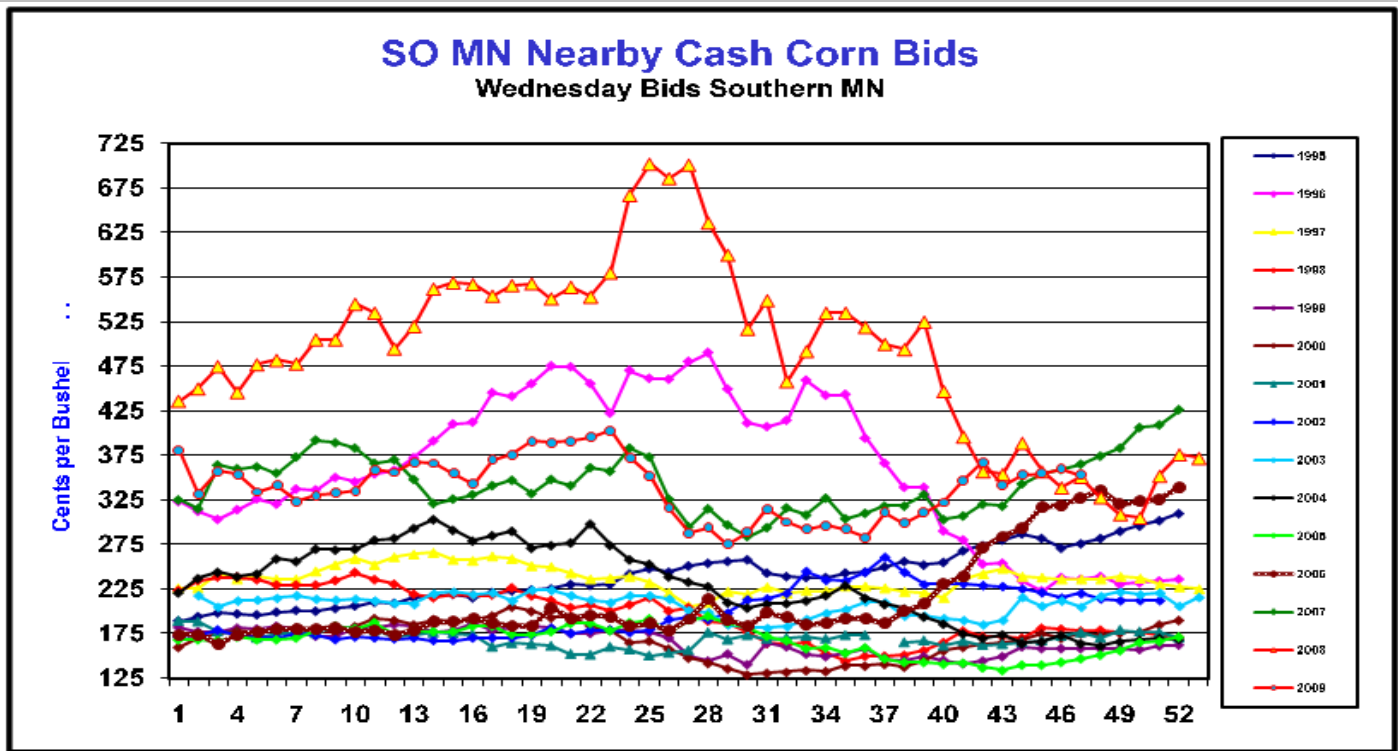
Monday November 30, 2009



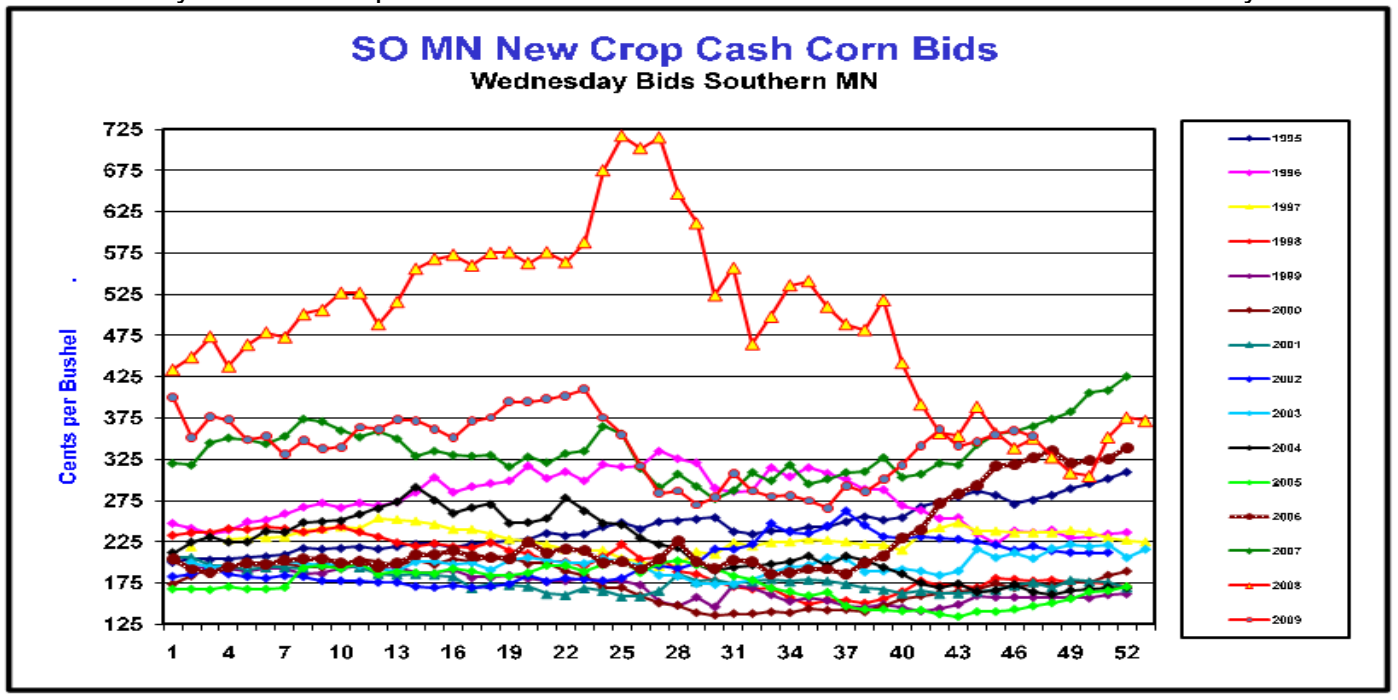
December corn futures at the highest price in history for the end of November.
Nearby corn basis had been the 2nd lowest in years until recent weeks



The information contained herein was obtained from sources believed to be reliable, but can not be guaranteed. FC Stone may have contributed to this report. All examples given are strictly hypothetical and neither the information, nor any opinion expressed, constitutes a solicitation to market commodities or buy or sell futures or options on futures. Commodity marketing and trading is risky. Trading and/or marketing decisions and any trading and/or marketing gains or losses are the responsibility of the commodity owner, producer, and/or account holder. Minnesota West Ag Services LLC and principals and employees assume no liability for any use of any information contained herein. Reproduction without authorization is forbidden.

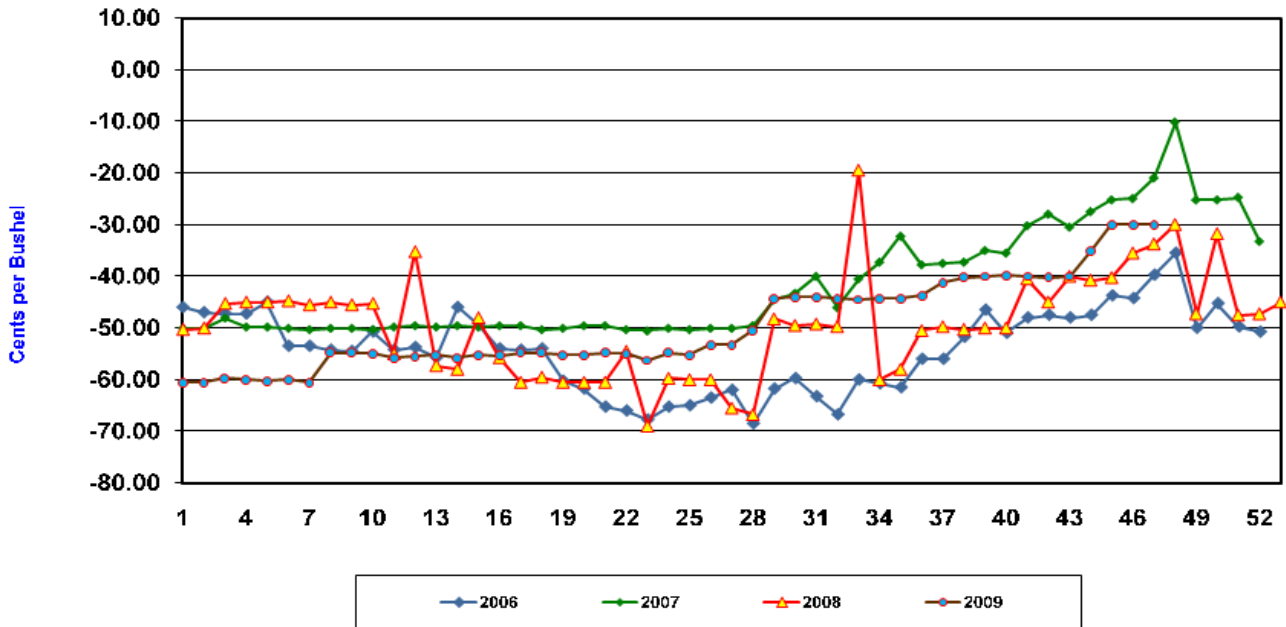


Nearby and new crop corn cash bids have been at record best for this time of the year.

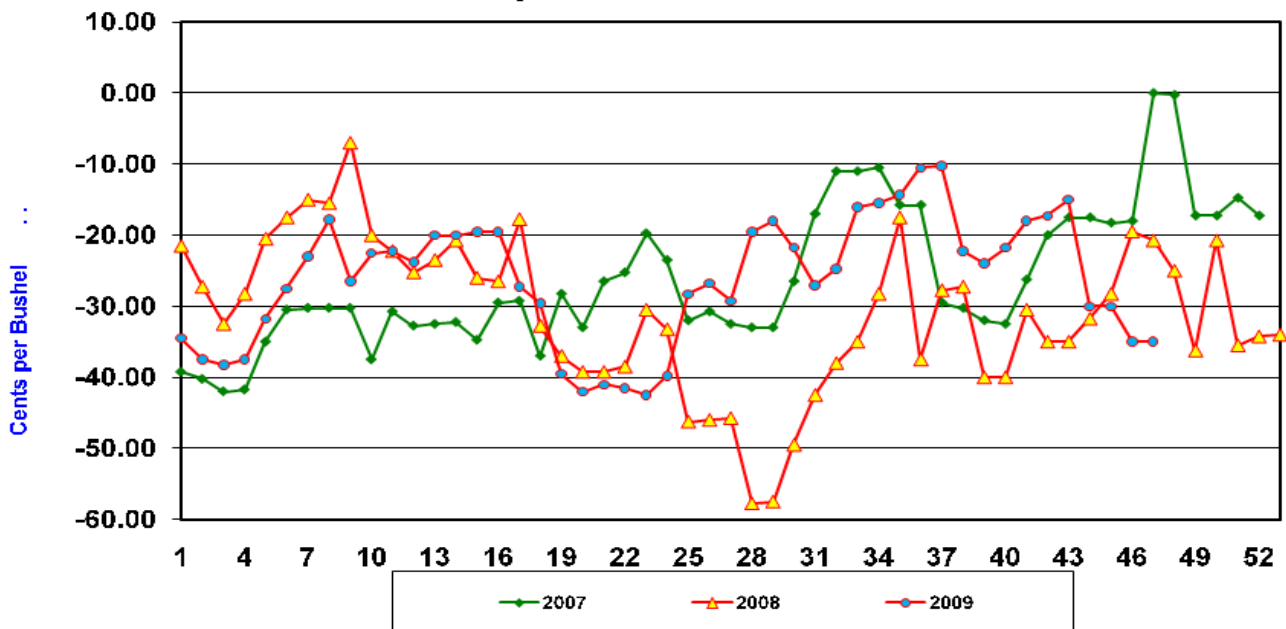


The information contained herein was obtained from sources believed to be reliable, but can not be guaranteed. FC Stone may have contributed to this report. All examples given are strictly hypothetical and neither the information, nor any opinion expressed, constitutes a solicitation to market commodities or buy or sell futures or options on futures. Commodity marketing and trading is risky. Trading and/or marketing decisions and any trading and/or marketing gains or losses are the responsibility of the commodity owner, producer, and/or account holder. Minnesota West Ag Services LLC and principals and employees assume no liability for any use of any information contained herein. Reproduction without authorization is forbidden.

New Crop Corn Basis
Wednesday Closes Meadowlands Lamberton MN

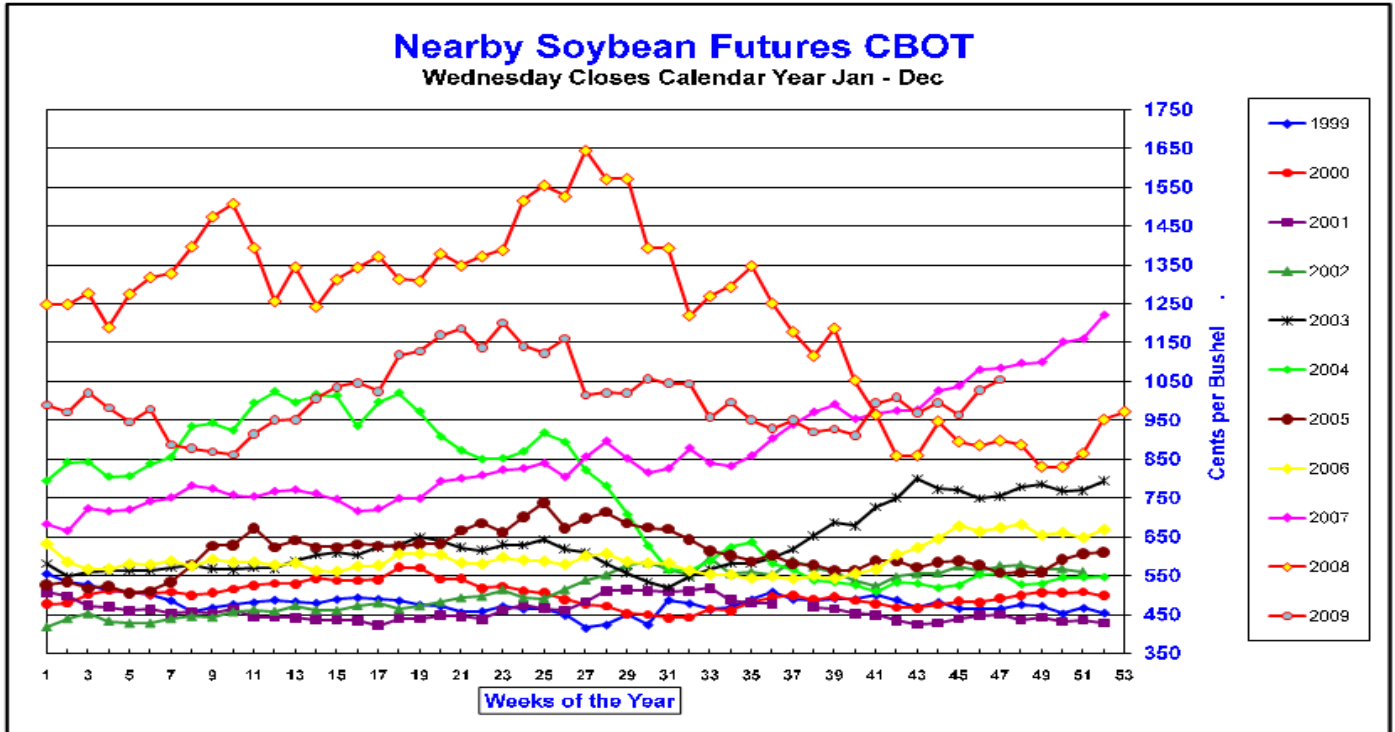


Nearby Cash Corn Basis
Wednesday Closes ADM Marshall MN

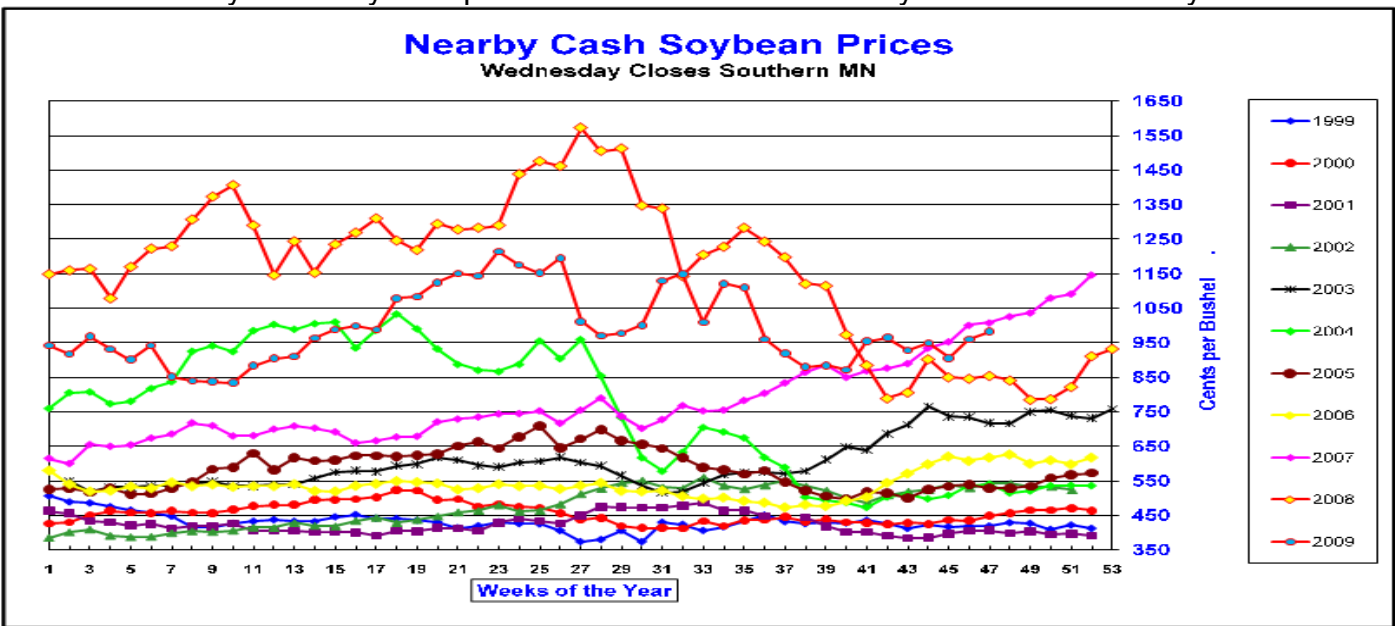


The information contained herein was obtained from sources believed to be reliable, but can not be guaranteed. FC Stone may have contributed to this report. All examples given are strictly hypothetical and neither the information, nor any opinion expressed, constitutes a solicitation to market commodities or buy or sell futures or options on futures. Commodity marketing and trading is risky. Trading and/or marketing decisions and any trading and/or marketing gains or losses are the responsibility of the commodity owner, producer, and/or account holder. Minnesota West Ag Services LLC and principals and employees assume no liability for any use of any information contained herein. Reproduction without authorization is forbidden.

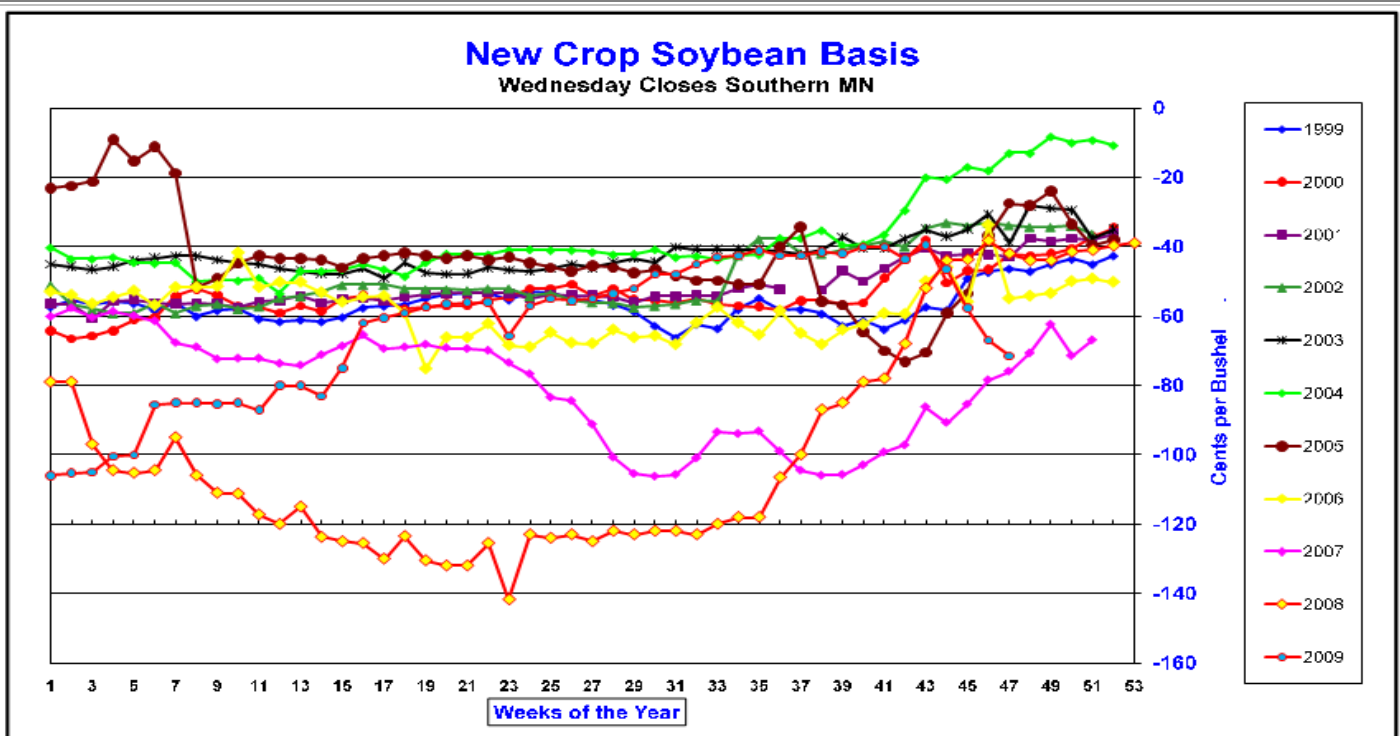
Nearby Soybean futures have been higher during this week of the year, only once in history, that being in 2008 for the 2007 crop.



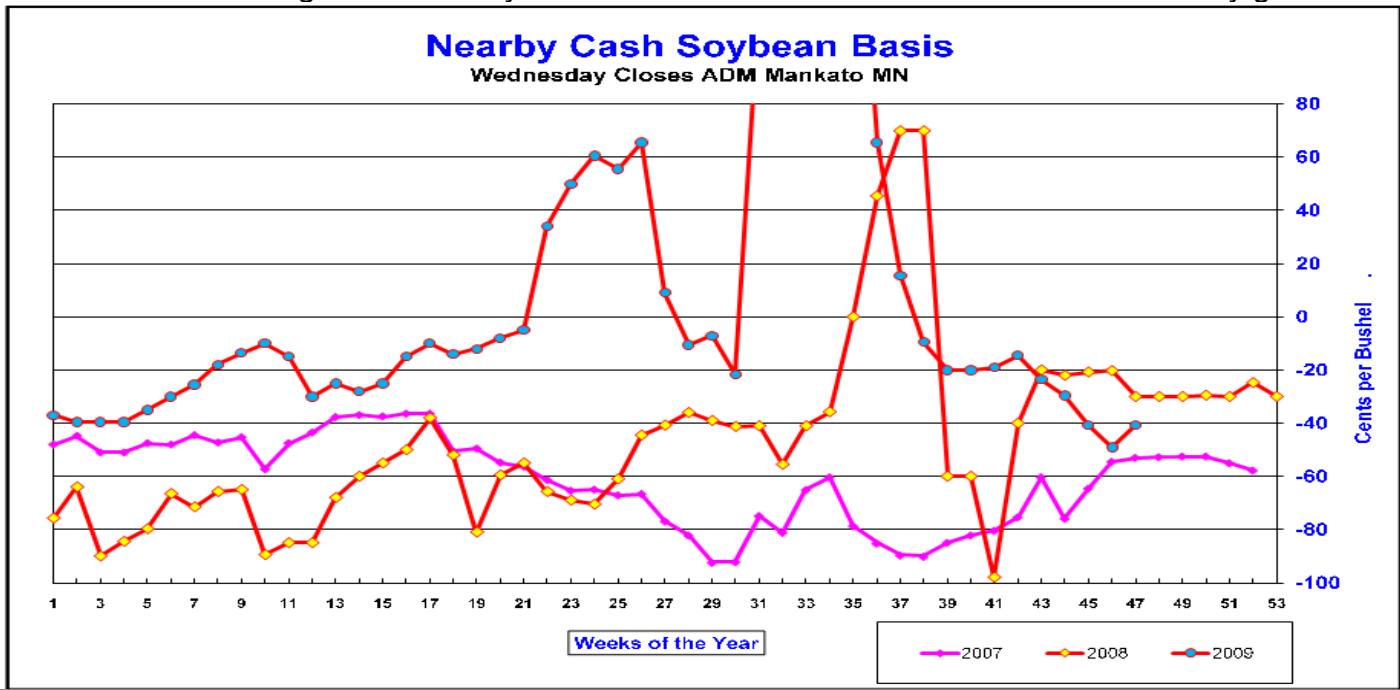
Nearby cash Soybean prices are the 2nd best in history for this time of the year.



The information contained herein was obtained from sources believed to be reliable, but can not be guaranteed. FC Stone may have contributed to this report. All examples given are strictly hypothetical and neither the information, nor any opinion expressed, constitutes a solicitation to market commodities or buy or sell futures or options on futures. Commodity marketing and trading is risky. Trading and/or marketing decisions and any trading and/or marketing gains or losses are the responsibility of the commodity owner, producer, and/or account holder. Minnesota West Ag Services LLC and principals and employees assume no liability for any use of any information contained herein. Reproduction without authorization is forbidden.



Nearby soybean basis at this Southern MN location is wide for this time of year, perhaps because elevators dealing with the delayed corn harvest. Processor basis remains relatively good.



The information contained herein was obtained from sources believed to be reliable, but can not be guaranteed. FC Stone may have contributed to this report. All examples given are strictly hypothetical and neither the information, nor any opinion expressed, constitutes a solicitation to market commodities or buy or sell futures or options on futures. Commodity marketing and trading is risky. Trading and/or marketing decisions and any trading and/or marketing gains or losses are the responsibility of the commodity owner, producer, and/or account holder. Minnesota West Ag Services LLC and principals and employees assume no liability for any use of any information contained herein. Reproduction without authorization is forbidden.