

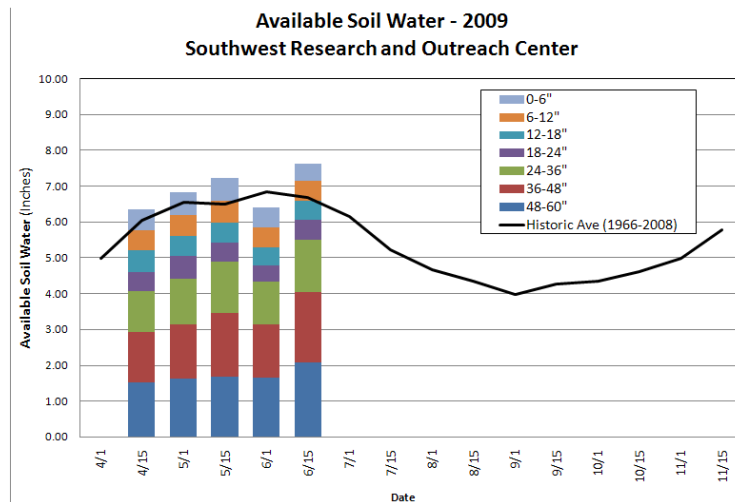
## Minnesota Soil Moisture

Thursday June 25, 2009

The following is courtesy of the South West Research Center at Lamberton, MN. The chart and tables on the left side of the page show available subsoil moisture at various depths with total subsoil moisture now above average. As shown in the chart on the right side this part of the state is still 3.68" of rainfall below normal. It can be noted that this area has received more rainfall than the counties to the north and east of Redwood County. However, MN crop condition ratings are above average with 80% of the corn and 73% of the soybeans rated good to excellent vs. averages of 71% and 66% for this time of the year.

[http://swroc.cfans.umn.edu/Weather/Charts/Soil/2009/09\\_soil\\_water.htm](http://swroc.cfans.umn.edu/Weather/Charts/Soil/2009/09_soil_water.htm)

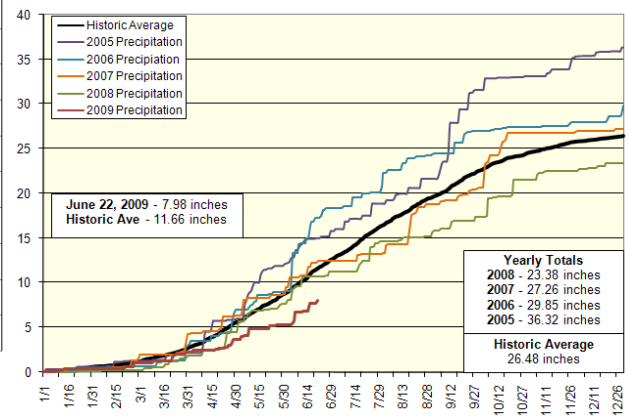
2009 Available Soil Water v. Historic Average (1966-2008)  
 Recorded at the SWROC, Lamberton



Date	0-6"	6-12"	12-18"	18-24"	24-36"	36-48"	48-60"	Total	Historic Average
4/1/09*									4.97
4/15/09	0.58	0.57	0.61	0.52	1.14	1.40	1.52	6.34	6.03
5/1/09	0.64	0.59	0.56	0.63	1.28	1.50	1.63	6.82	6.55
5/15/09	0.64	0.62	0.56	0.53	1.41	1.79	1.67	7.22	6.48
6/1/09	0.56	0.55	0.52	0.43	1.20	1.48	1.65	6.39	6.83
6/15/09	0.48	0.54	0.55	0.55	1.45	1.96	2.07	7.60	6.66
7/1/09									6.14
7/15/09									5.21
8/1/09									4.67
8/15/09									4.33
9/1/09									3.97
9/15/09									4.26
10/1/09									4.35
10/15/09									4.60
11/1/09									4.98
11/15/09*									5.78

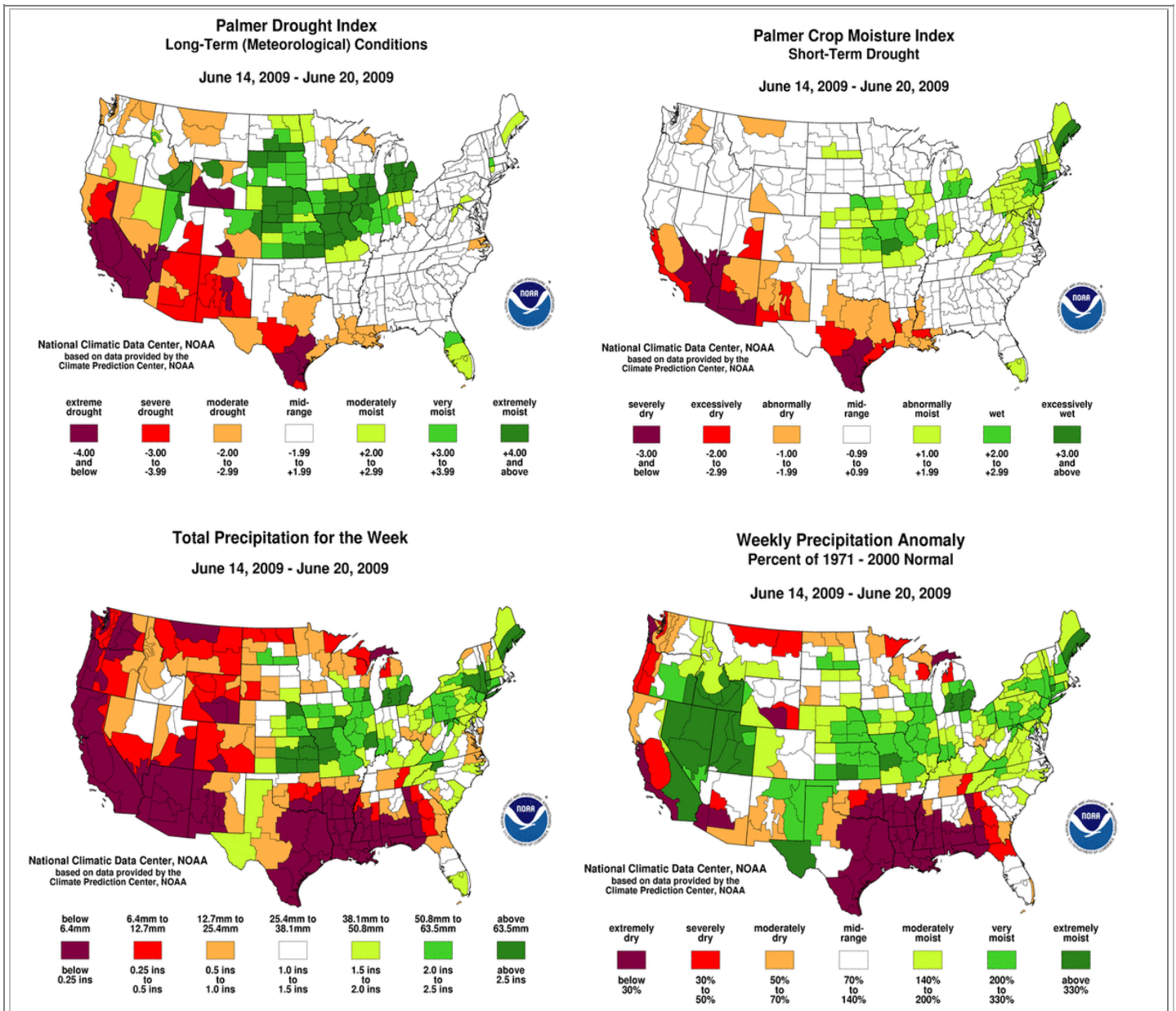
\* These samples dates have a much smaller data pool than other dates.

2005-2009 Yearly Precipitation Totals vs. Historic Average  
 Southwest Research & Outreach Center  
 Lamberton, MN



Yearly Totals
2008 - 23.38 inches
2007 - 27.26 inches
2006 - 29.85 inches
2005 - 36.32 inches
Historic Average 26.48 inches

The information contained herein was obtained from sources believed to be reliable, but cannot be guaranteed. FC Stone may have contributed to this report. All examples given are strictly hypothetical and neither the information, nor any opinion expressed, constitutes a solicitation to market commodities or buy or sell futures or options on futures. Past financial performance and results are not indicative of, nor do they guarantee, future performance. Commodity marketing and trading has inherent risks. Trading and/or marketing decisions, as well as any gains or losses thereof, are the sole responsibility of the commodity owner, producer, and or account holder. Minnesota West Ag. Services, LLC, its principals and employees assume no liability for any use of any information contained herein. Reproduction without authorization is forbidden.



The information contained herein was obtained from sources believed to be reliable, but cannot be guaranteed. FC Stone may have contributed to this report. All examples given are strictly hypothetical and neither the information, nor any opinion expressed, constitutes a solicitation to market commodities or buy or sell futures or options on futures. Past financial performance and results are not indicative of, nor do they guarantee, future performance. Commodity marketing and trading has inherent risks. Trading and/or marketing decisions, as well as any gains or losses thereof, are the sole responsibility of the commodity owner, producer, and or account holder. Minnesota West Ag. Services, LLC, its principals and employees assume no liability for any use of any information contained herein. Reproduction without authorization is forbidden.