



# WEEKLY EXPORTS

David Scheibel  
[david@mnwestag.com](mailto:david@mnwestag.com)  
 Toll Free 1-877-365-3744  
[www.mnwestag.com](http://www.mnwestag.com)

Thursday Jan 28, 2010

## WEEKLY EXPORT SALES

Week Ending	mil bu <u>Corn</u>		mil bu <u>Soybeans</u>		mil bu <u>Wheat</u>		000 tons <u>Soymeal</u>		000 tons <u>Soyoil</u>	
	2009-10	2010-11	2009-10	2010-11	2009-10	2010-11	2009-10	2010-11	2009-10	2010-11
	11/19/09	48.2	15.9	41.7	0.0	12.9	1.6	225.2	1.4	19.2
11/26/09	25.9	0.0	26.6	0.3	14.4	0.0	107.4	6.5	19.0	0.0
12/03/09	33.4	0.0	34.1	-0.3	9.0	0.0	297.2	7.0	12.3	0.0
12/10/09	48.3	0.0	34.3	0.4	12.7	0.0	191.4	-7.0	20.7	0.0
12/17/09	62.7	0.0	43.9	6.4	8.1	0.0	254.2	0.0	46.7	0.0
12/24/09	30.4	0.0	29.4	10.1	13.6	0.0	286.9	0.6	1.5	0.0
12/31/09	14.4	0.0	26.7	0.0	3.4	0.0	61.8	0.0	3.5	0.0
01/07/10	12.9	0.0	27.7	0.0	6.7	0.0	356.7	0.3	50.0	0.0
01/14/10	63.4	0.0	34.2	2.2	30.3	2.2	416.2	1.4	10.4	0.0
01/21/10	35.5	0.0	24.8	6.8	24.3	1.1	254.1	14.1	46.0	0.0
10 Wk Ave	37.5	1.6	32.3	2.6	13.5	0.5	245.1	2.4	22.9	0.0

## TRADE ESTIMATES\*\*

	mil bu <u>Corn</u>	mil bu <u>Soybeans</u>	mil bu <u>Wheat</u>	000 tons <u>Soymeal</u>	000 tons <u>Soyoil</u>
01/21/10	31.5-41.3	25.7-33.1	16.5-23.9	200-300	10-20

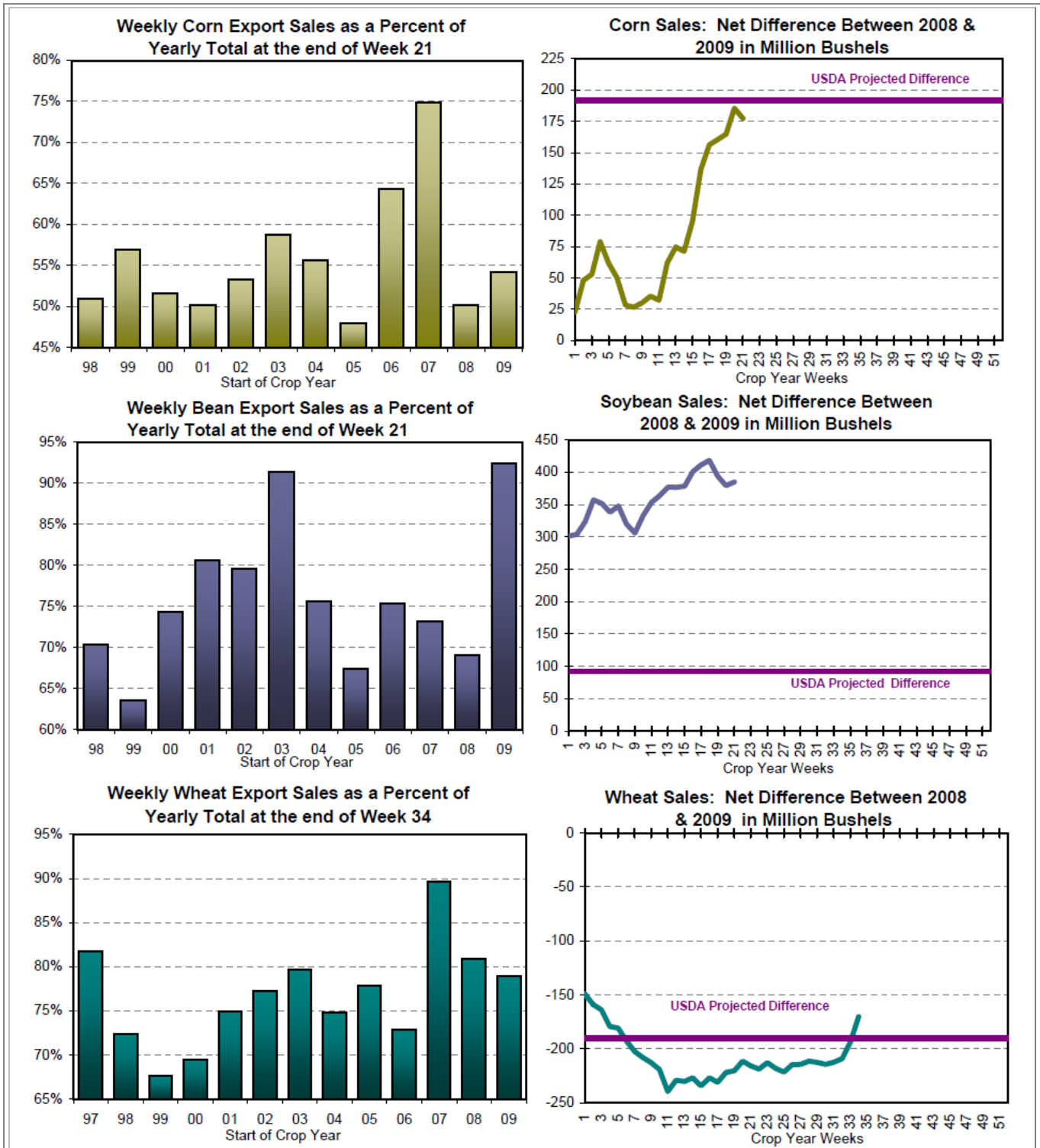
\*\*Estimates include both old and new crop all commodities

## EXPORT ANALYSIS

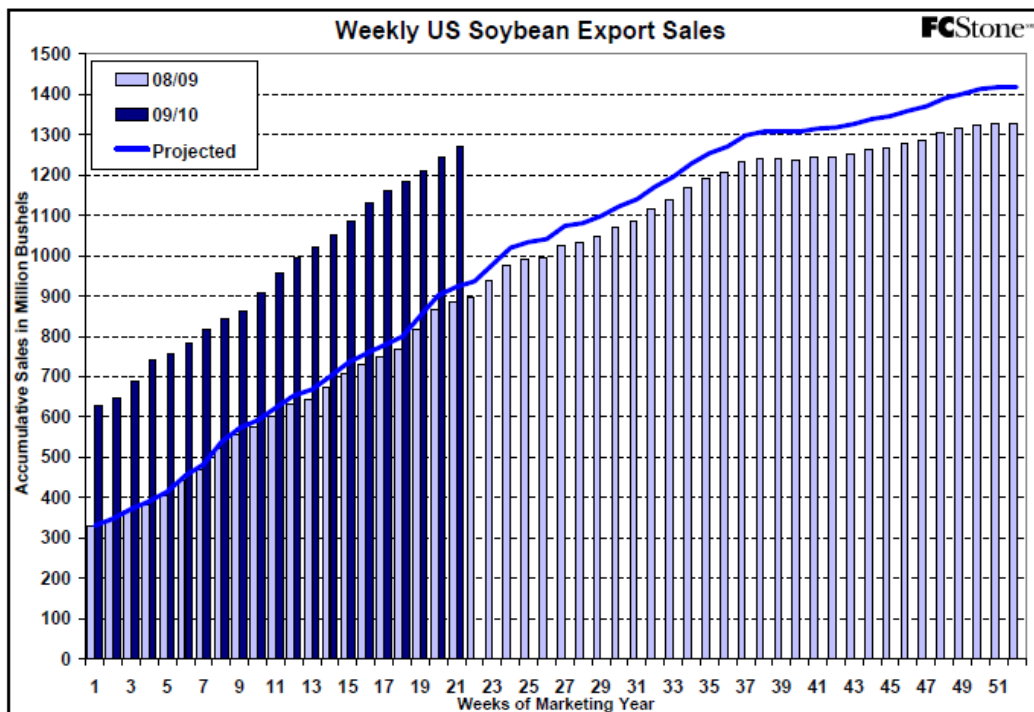
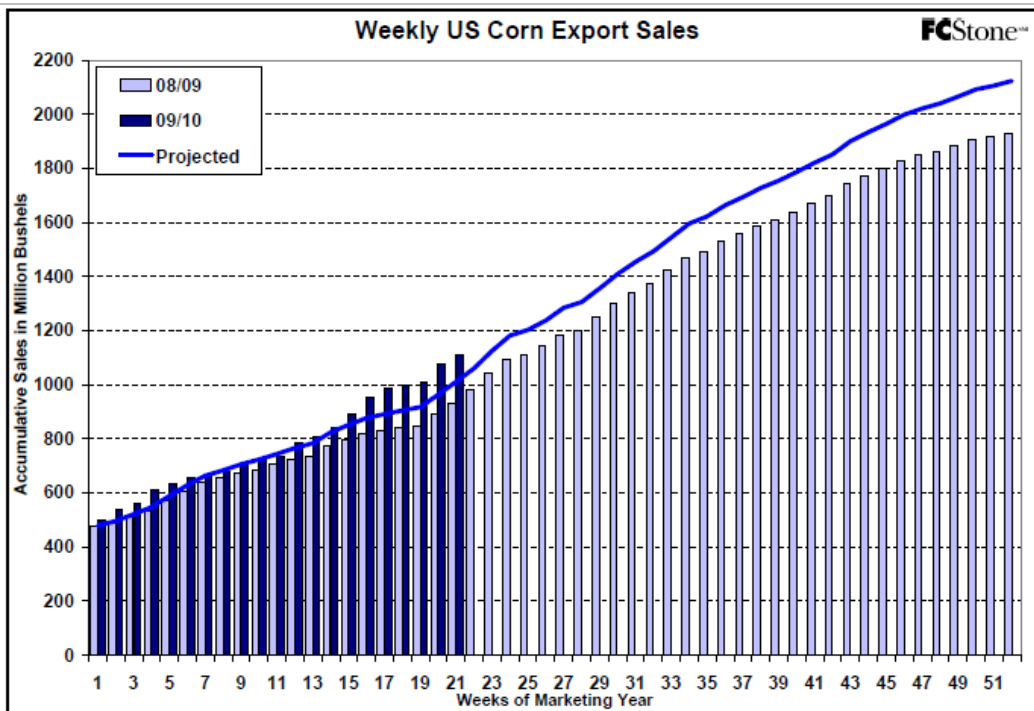
Week Ending	mil bu <u>Corn</u>	mil bu <u>Soybeans</u>	mil bu <u>Wheat</u>	000 tons <u>Soymeal</u>	000 tons <u>Soyoil</u>
Year to Date Sales	1111	1270	651	6857	895
YTD Sales (Last Year)	934	885	821	3609	257
USDA Yearly Estimate**	2050	1375	825	8756	1470
Weeks Left in Crop Year	31	31	20	36	36
Needed to Reach USDA Total	939	105	174	1899	575
<b>Needed Weekly to Reach USDA Total</b>	<b>30.3</b>	<b>3.4</b>	<b>8.7</b>	<b>52.7</b>	<b>16.0</b>

\*\* Meal projection does not include hulls

The information contained herein was obtained from sources believed to be reliable, but cannot be guaranteed. FC Stone may have contributed to this report. All examples given are strictly hypothetical and neither the information, nor any opinion expressed, constitutes a solicitation to market commodities or buy or sell futures or options on futures. Past financial performance and results are not indicative of, nor do they guarantee, future performance. Commodity marketing and trading has inherent risks. Trading and/or marketing decisions, as well as any gains or losses thereof, are the sole responsibility of the commodity owner, producer, and or account holder. Minnesota West Ag. Services, LLC, its principals and employees assume no liability for any use of any information contained herein. Reproduction without authorization is forbidden.



The information contained herein was obtained from sources believed to be reliable, but cannot be guaranteed. FC Stone may have contributed to this report. All examples given are strictly hypothetical and neither the information, nor any opinion expressed, constitutes a solicitation to market commodities or buy or sell futures or options on futures. Past financial performance and results are not indicative of, nor do they guarantee, future performance. Commodity marketing and trading has inherent risks. Trading and/or marketing decisions, as well as any gains or losses thereof, are the sole responsibility of the commodity owner, producer, and or account holder. Minnesota West Ag. Services, LLC, its principals and employees assume no liability for any use of any information contained herein. Reproduction without authorization is forbidden.



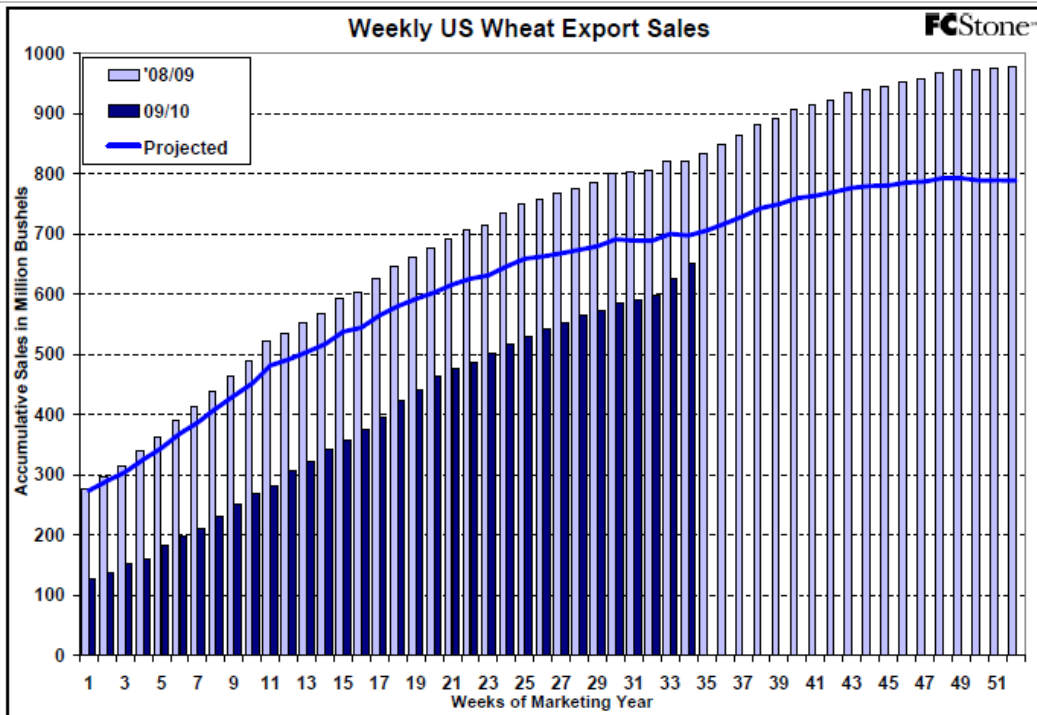
The information contained herein was obtained from sources believed to be reliable, but cannot be guaranteed. FC Stone may have contributed to this report. All examples given are strictly hypothetical and neither the information, nor any opinion expressed, constitutes a solicitation to market commodities or buy or sell futures or options on futures. Past financial performance and results are not indicative of, nor do they guarantee, future performance. Commodity marketing and trading has inherent risks. Trading and/or marketing decisions, as well as any gains or losses thereof, are the sole responsibility of the commodity owner, producer, and or account holder. Minnesota West Ag. Services, LLC, its principals and employees assume no liability for any use of any information contained herein. Reproduction without authorization is forbidden.



# WEEKLY EXPORTS

David Scheibel  
[david@mnwestag.com](mailto:david@mnwestag.com)  
 Toll Free 1-877-365-3744  
[www.mnwestag.com](http://www.mnwestag.com)

Thursday Jan 28, 2010



## Estimated Funds Position

January 26, 2010

Funds	30-day	CORN			SOYBEANS			MEAL			OIL			CHI WHEAT			KC WHEAT		
		Daily	CFTC*	Net	Daily	CFTC*	Net	Daily	CFTC*	Net	Daily	CFTC*	Net	Daily	CFTC*	Net	Daily	CFTC*	Net
24-Dec	TH	1,000		217,842	-1,000		93,119	0		25,716	1,000		24,543	-1,000		-24,796	0		15,400
28-Dec	M	5,000		222,842	4,000		97,119	1,000		26,716	2,000		26,543	3,000		-21,796	400		15,800
29-Dec	T	2,000	238,788	224,842	4,000	75,860	101,119	1,000	24,678	27,716	0	22,602	26,543	-2,000	-25,888	-23,796	0	18,888	15,800
30-Dec	W	-6,000		230,788	-4,000		71,650	1,000		25,578	2,000		24,502	1,000		-24,868	0		16,698
31-Dec	TH	2,000		232,788	3,000		74,650	0		25,578	2,000		26,502	-1,000		-25,868	-200		16,498
4-Jan	M	8,000		240,788	4,000		78,650	1,000		26,578	3,000		29,502	4,000		-21,868	0		16,498
6-Jan	T	1,000	263,880	241,788	3,000	87,808	81,650	1,000	28,026	27,578	-2,000	28,881	27,502	1,000	-20,828	-20,868	500	18,488	16,998
8-Jan	W	6,000		269,980	-4,000		83,809	-1,000		28,026	-2,000		27,691	4,000		-16,626	0		18,493
7-Jan	TH	-8,000		261,980	-6,000		77,809	-1,000		27,026	-2,000		25,691	-2,000		-18,626	-300		18,193
8-Jan	F	15,000		276,980	-4,000		73,809	0		27,026	-2,000		23,691	4,000		-14,626	500		18,693
11-Jan	M	-3,000		273,980	-4,000		69,809	-1,000		26,026	-2,000		21,691	3,000		-11,626	500		19,193
12-Jan	T	-15,000	273,133	258,980	-12,000	82,368	57,809	-3,000	28,687	23,026	-4,000	24,481	17,691	-7,000	-23,648	-18,626	-1,000	21,107	18,193
13-Jan	W	-30,000		243,133	6,000		68,359	2,000		28,587	2,000		26,491	0		-23,549	400		21,507
14-Jan	TH	-9,000		234,133	-5,000		63,359	-1,000		27,587	-2,000		24,491	-4,000		-27,549	-200		21,307
16-Jan	F	-11,000		223,133	-6,000		57,359	0		27,587	-2,000		22,491	-3,000		-30,549	-500		20,807
19-Jan	T	-4,000	181,778	219,133	-5,000	60,140	52,359	-1,000	28,686	26,587	-2,000	18,828	20,491	-4,000	-36,842	-34,549	0	18,684	20,807
20-Jan	W	-4,000		177,778	-5,000		45,140	-2,000		26,595	-3,000		7,629	-4,000		-39,842	0		19,564
21-Jan	TH	5,000		182,778	3,000		48,140	1,000		27,595	2,000		9,629	2,000		-37,842	0		19,564
22-Jan	F	-11,000		171,778	-3,000		45,140	0		27,595	-2,000		7,629	-1,000		-38,842	0		19,564
26-Jan	M	6,000		177,778	-5,000		40,140	-1,000		26,595	-2,000		5,629	0		-38,842	0		19,564
28-Jan	T	-7,000		170,778	5,000		45,140	1,000		27,686	1,000		8,828	-2,000		-40,842	-100		18,484

The information contained herein was obtained from sources believed to be reliable, but cannot be guaranteed. FC Stone may have contributed to this report. All examples given are strictly hypothetical and neither the information, nor any opinion expressed, constitutes a solicitation to market commodities or buy or sell futures or options on futures. Past financial performance and results are not indicative of, nor do they guarantee, future performance. Commodity marketing and trading has inherent risks. Trading and/or marketing decisions, as well as any gains or losses thereof, are the sole responsibility of the commodity owner, producer, and or account holder. Minnesota West Ag. Services, LLC, its principals and employees assume no liability for any use of any information contained herein. Reproduction without authorization is forbidden.