



WEEKLY EXPORTS

David Scheibel
david@mnwestag.com
 Toll Free 1-877-365-3744
www.mnwestag.com

Thursday March 18, 2010

WEEKLY EXPORT SALES

Week Ending	<u>Corn</u>				<u>Soybeans</u>				<u>Wheat</u>				<u>Soymeal</u>		<u>Soyoil</u>	
	000 tons		mil bu		000 tons		mil bu		000 tons		mil bu		000 tons		000 tons	
	09-10	10-11	09-10	10-11	09-10	10-11	09-10	10-11	09-10	10-11	09-10	10-11	09-10	10-11	09-10	10-11
01/07/10	327.7	0.0	12.9	0.0	753.9	0.0	27.7	0.0	182.3	0.0	6.7	0.0	356.7	0.3	50.0	0.0
01/14/10	1610.4	0.0	63.4	0.0	930.8	59.9	34.2	2.2	824.6	59.9	30.3	2.2	416.2	1.4	10.4	0.0
01/21/10	901.7	0.0	35.5	0.0	673.6	183.7	24.8	6.8	660.8	28.6	24.3	1.1	254.1	14.1	46.0	0.0
01/28/10	922.1	2.5	36.3	0.1	381.0	2.7	14.0	0.1	419.1	65.3	15.4	2.4	134.9	0.1	58.8	0.0
02/04/10	744.2	7.6	29.3	0.3	313.0	-46.3	11.5	-1.7	547.0	29.9	20.1	1.1	102.7	0.7	44.8	0.0
02/11/10	975.4	0.0	38.4	0.0	204.1	0.0	7.5	0.0	408.2	54.4	15.0	2.0	242.1	3.0	46.7	0.0
02/18/10	401.3	50.8	15.8	2.0	239.5	2.7	8.8	0.1	375.6	32.7	13.8	1.2	81.9	0.0	40.2	0.0
02/25/10	762.0	71.1	30.0	2.8	182.3	187.8	6.7	6.9	100.7	2.7	3.7	0.1	85.7	3.2	15.9	0.0
03/04/10	338.6	0.3	13.3	0.0	-115.8	65.1	-4.3	2.4	407.9	40.5	15.0	1.5	1.9	0.3	-9.4	0.0
03/11/10	747.6	0.0	29.4	0.0	214.1	525.0	7.9	19.3	325.3	114.0	12.0	4.2	92.5	65.8	18.4	0.0
10 Wk Av	773.1	13.2	30.4	0.5	377.7	98.1	13.9	3.6	425.2	42.8	15.6	1.6	176.9	8.9	32.2	0.0

TRADE ESTIMATES**

03/11/10	<u>Corn</u>		<u>Soybeans</u>		<u>Wheat</u>		<u>Soymeal</u>	<u>Soyoil</u>
	000 tons	mil bu	000 tons	mil bu	000 tons	mil bu	000 tons	000 tons
	400-600	15.7-23.6	150-250	5.5-9.2	300-425	11.0-15.6	25-100	5-15

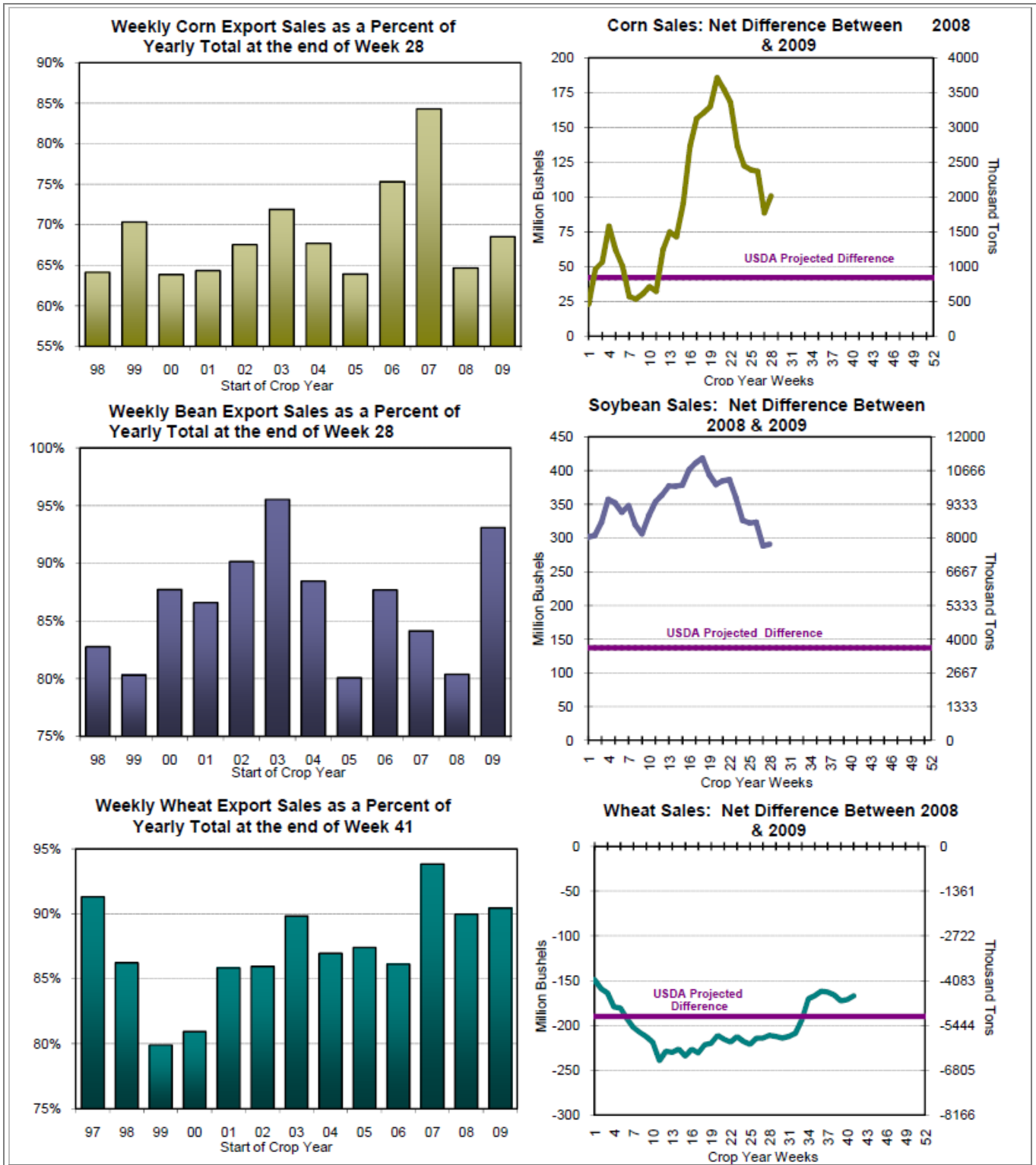
**Estimates include both old and new crop all commodities

EXPORT ANALYSIS

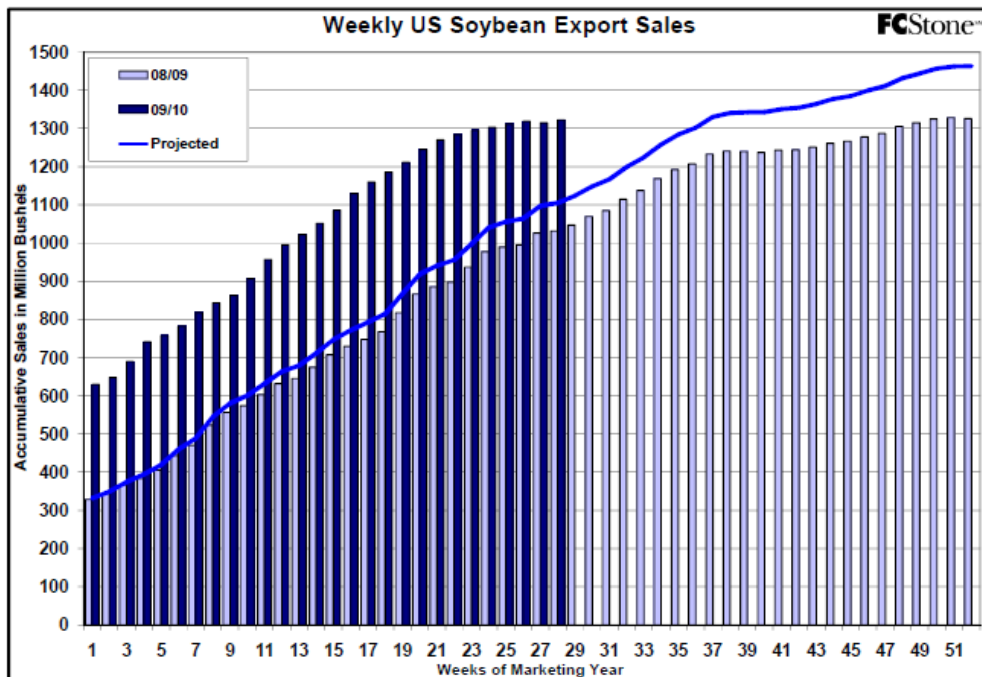
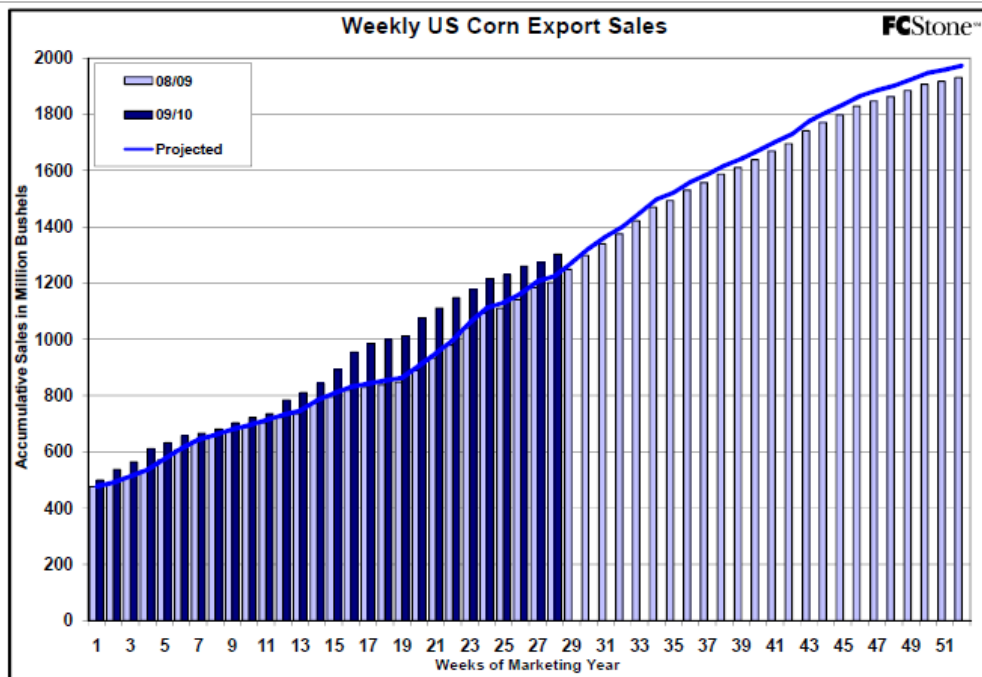
Week Ending	<u>Corn</u>		<u>Soybeans</u>		<u>Wheat</u>		<u>Soymeal</u>	<u>Soyoil</u>
	000 tons	mil bu	000 tons	mil bu	000 tons	mil bu	000 tons	000 tons
YTD Sales	33083	1302	35982	1322	20306	746	7599	1111
YTD Sales (LY)	30525	1202	28069	1031	24854	913	4575	398
USDA Yearly Estimate**	48262	1900	38647	1420	22453	825	9019	1470
Weeks Left in Crop Year	24	24	24	24	13	13	29	29
Needed to Reach USDA Total	15179	598	2665	98	2147	79	1420	359
Needed Weekly to Reach USDA	632.4	24.9	111.0	4.1	165.1	6.1	49.0	12.4

** Meal projection does not include hulls

The information contained herein was obtained from sources believed to be reliable, but cannot be guaranteed. FC Stone may have contributed to this report. All examples given are strictly hypothetical and neither the information, nor any opinion expressed, constitutes a solicitation to market commodities or buy or sell futures or options on futures. Past financial performance and results are not indicative of, nor do they guarantee, future performance. Commodity marketing and trading has inherent risks. Trading and/or marketing decisions, as well as any gains or losses thereof, are the sole responsibility of the commodity owner, producer, and or account holder. Minnesota West Ag. Services, LLC, its principals and employees assume no liability for any use of any information contained herein. Reproduction without authorization is forbidden.



The information contained herein was obtained from sources believed to be reliable, but cannot be guaranteed. FC Stone may have contributed to this report. All examples given are strictly hypothetical and neither the information, nor any opinion expressed, constitutes a solicitation to market commodities or buy or sell futures or options on futures. Past financial performance and results are not indicative of, nor do they guarantee, future performance. Commodity marketing and trading has inherent risks. Trading and/or marketing decisions, as well as any gains or losses thereof, are the sole responsibility of the commodity owner, producer, and or account holder. Minnesota West Ag. Services, LLC, its principals and employees assume no liability for any use of any information contained herein. Reproduction without authorization is forbidden.



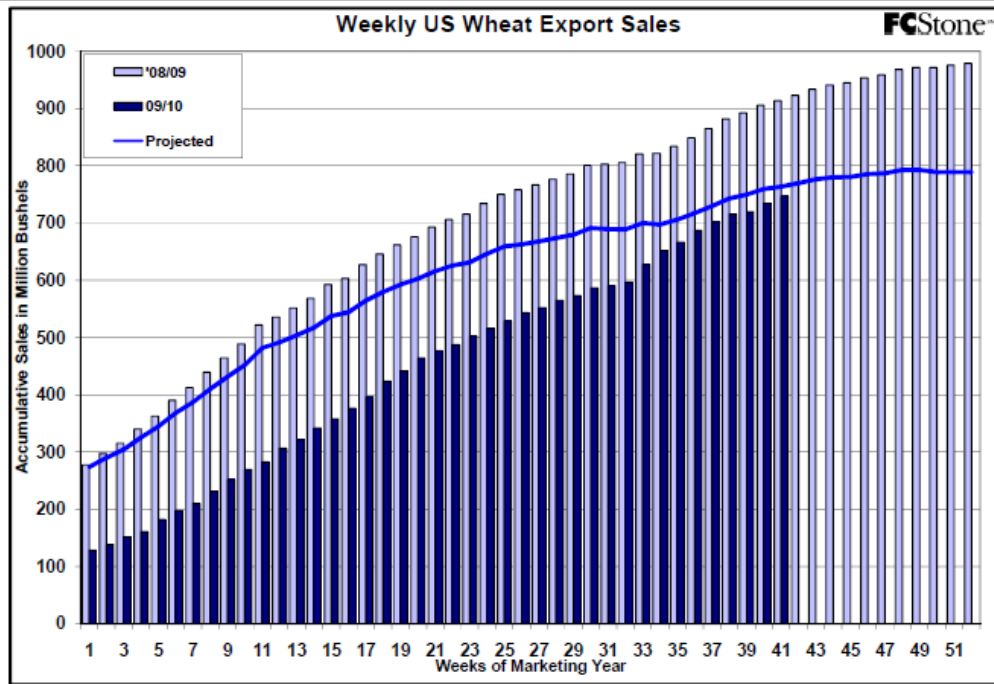
The information contained herein was obtained from sources believed to be reliable, but cannot be guaranteed. FC Stone may have contributed to this report. All examples given are strictly hypothetical and neither the information, nor any opinion expressed, constitutes a solicitation to market commodities or buy or sell futures or options on futures. Past financial performance and results are not indicative of, nor do they guarantee, future performance. Commodity marketing and trading has inherent risks. Trading and/or marketing decisions, as well as any gains or losses thereof, are the sole responsibility of the commodity owner, producer, and or account holder. Minnesota West Ag. Services, LLC, its principals and employees assume no liability for any use of any information contained herein. Reproduction without authorization is forbidden.



WEEKLY EXPORTS

David Scheibel
david@mnwestag.com
 Toll Free 1-877-365-3744
www.mnwestag.com

Thursday March 18, 2010



Estimated Funds Position

March 17, 2010

Funds	30-day	CORN			SOYBEANS			MEAL			OIL			CHI WHEAT			KC WHEAT		
		Daily	CFTC*	Net	Daily	CFTC*	Net	Daily	CFTC*	Net	Daily	CFTC*	Net	Daily	CFTC*	Net	Daily	CFTC*	Net
17-Feb	W	-7,000		82,036	-5,000		14,603	-2,000		21,402	-3,000		16,212	-4,000		-55,195	0		12,487
18-Feb	TH	-8,000		74,036	-5,000		9,603	-1,000		20,402	-1,000		15,212	-4,000		-59,195	0		12,487
19-Feb	F	5,000		79,036	-3,000		6,603	1,000		21,402	-2,000		13,212	3,000		-55,195	0		12,487
22-Feb	M	14,000		93,036	5,000		11,603	1,000		22,402	2,000		15,212	4,000		-52,195	300		12,787
23-Feb	T	-6,000	88,897	87,036	-5,000	14,782	6,603	-2,000	24,720	20,402	-3,000	14,168	12,212	-4,000	-42,044	-55,195	0	13,165	12,787
24-Feb	W	11,000		100,997	5,000		19,792	-2,000		22,720	3,000		17,168	4,000		-38,044	0		13,155
26-Feb	TH	-8,000		92,997	-6,000		13,792	-2,000		20,720	-4,000		13,168	-4,000		-42,044	-200		12,955
28-Feb	F	10,000		102,997	6,000		19,792	1,000		21,720	3,000		16,168	3,000		-39,044	400		13,355
1-Mar	M	-10,000		92,997	2,000		21,792	-1,000		20,720	3,000		19,168	-4,000		-43,044	-200		13,155
2-Mar	T	-3,000	113,681	89,997	3,000	12,140	24,792	-1,000	18,026	19,720	2,000	18,716	21,168	0	-38,966	-43,044	0	14,431	13,155
3-Mar	W	8,000		121,591	1,000		13,140	-1,000		18,025	1,000		20,715	3,000		-35,955	0		14,431
4-Mar	TH	-5,000		116,591	-6,000		7,140	-3,000		15,025	-2,000		18,715	-3,000		-38,955	0		14,431
6-Mar	F	-9,000		107,591	3,000		10,140	0		15,025	1,000		19,715	-3,000		-41,955	0		14,431
8-Mar	M	-1,000		106,591	3,000		13,140	1,000		16,025	2,000		21,715	1,000		-40,955	0		14,431
8-Mar	T	-10,000	110,281	96,591	0	2,288	13,140	0	8,088	16,025	0	21,888	21,715	-3,000	-37,628	-43,955	0	12,771	14,431
10-Mar	W	-7,000		103,261	6,000		8,286	0		6,066	3,000		24,386	-4,000		-41,526	0		12,771
11-Mar	TH	0		103,261	-7,000		1,286	-2,000		4,066	-3,000		21,386	-2,000		-43,526	0		12,771
12-Mar	F	-3,000		100,261	-4,000		-2,714	-1,000		3,066	-3,000		18,386	3,000		-40,526	0		12,771
16-Mar	M	-3,000		97,261	3,000		286	2,000		5,066	-3,000		15,386	-2,000		-42,526	0		12,771
18-Mar	T	5,000		102,261	5,000		5,286	2,000		7,066	3,000		18,386	3,000		-39,526	0		12,771
17-Mar	W	7,000		109,281	5,000		10,286	2,000		8,088	2,000		20,388	3,000		-36,628	0		12,771

The information contained herein was obtained from sources believed to be reliable, but cannot be guaranteed. FC Stone may have contributed to this report. All examples given are strictly hypothetical and neither the information, nor any opinion expressed, constitutes a solicitation to market commodities or buy or sell futures or options on futures. Past financial performance and results are not indicative of, nor do they guarantee, future performance. Commodity marketing and trading has inherent risks. Trading and/or marketing decisions, as well as any gains or losses thereof, are the sole responsibility of the commodity owner, producer, and or account holder. Minnesota West Ag. Services, LLC, its principals and employees assume no liability for any use of any information contained herein. Reproduction without authorization is forbidden.