



WEEKLY EXPORTS

David Scheibel
david@mnwestag.com
 Toll Free 1-877-365-3744
www.mnwestag.com

Thursday April 22, 2010

WEEKLY EXPORT SALES

Week Ending	<u>Corn</u>				<u>Soybeans</u>				<u>Wheat</u>				<u>Soymeal</u>		<u>Soyoil</u>	
	000 tons		mil bu		000 tons		mil bu		000 tons		mil bu		000 tons		000 tons	
	09-10	10-11	09-10	10-11	09-10	10-11	09-10	10-11	09-10	10-11	09-10	10-11	09-10	10-11	09-10	10-11
02/11/10	975.4	0.0	38.4	0.0	204.1	0.0	7.5	0.0	408.2	54.4	15.0	2.0	242.1	3.0	46.7	0.0
02/18/10	401.3	50.8	15.8	2.0	239.5	2.7	8.8	0.1	375.6	32.7	13.8	1.2	81.9	0.0	40.2	0.0
02/25/10	762.0	71.1	30.0	2.8	182.3	187.8	6.7	6.9	100.7	2.7	3.7	0.1	85.7	3.2	15.9	0.0
03/04/10	338.6	0.3	13.3	0.0	-115.8	65.1	-4.3	2.4	407.9	40.5	15.0	1.5	1.9	0.3	-9.4	0.0
03/11/10	747.6	0.0	29.4	0.0	214.1	525.0	7.9	19.3	325.3	114.0	12.0	4.2	92.5	65.8	18.4	0.0
03/18/10	606.8	0.0	23.9	0.0	273.4	46.5	10.0	1.7	371.2	148.0	13.6	5.4	189.5	25.7	13.0	0.8
03/25/10	826.1	0.4	32.5	0.0	178.5	210.0	6.6	7.7	430.6	53.0	15.8	1.9	68.1	-11.3	14.0	0.0
04/01/10	1357.8	-59.8	53.5	-2.4	205.7	238.1	7.6	8.7	323.7	209.7	11.9	7.7	211.9	6.0	6.8	0.0
04/08/10	1006.3	140.9	39.6	5.5	158.0	293.2	5.8	10.8	101.1	310.8	3.7	11.4	85.0	16.3	13.5	0.0
04/15/10	1481.0	0.0	58.3	0.0	308.6	60.0	11.3	2.2	166.4	298.3	6.1	11.0	94.3	0.3	-1.9	0.0
10 Wk Av	850.3	20.4	33.5	0.8	184.8	162.8	6.8	6.0	301.1	126.4	11.1	4.6	115.3	10.9	15.7	0.1

TRADE ESTIMATES**

04/15/10	<u>Corn</u>		<u>Soybeans</u>		<u>Wheat</u>		<u>Soymeal</u>	<u>Soyoil</u>
	000 tons	mil bu	000 tons	mil bu	000 tons	mil bu	000 tons	000 tons
	850-1100	33.5-43.3	450-650	16.5-23.9	350-500	12.9-18.4	75-125	5-15

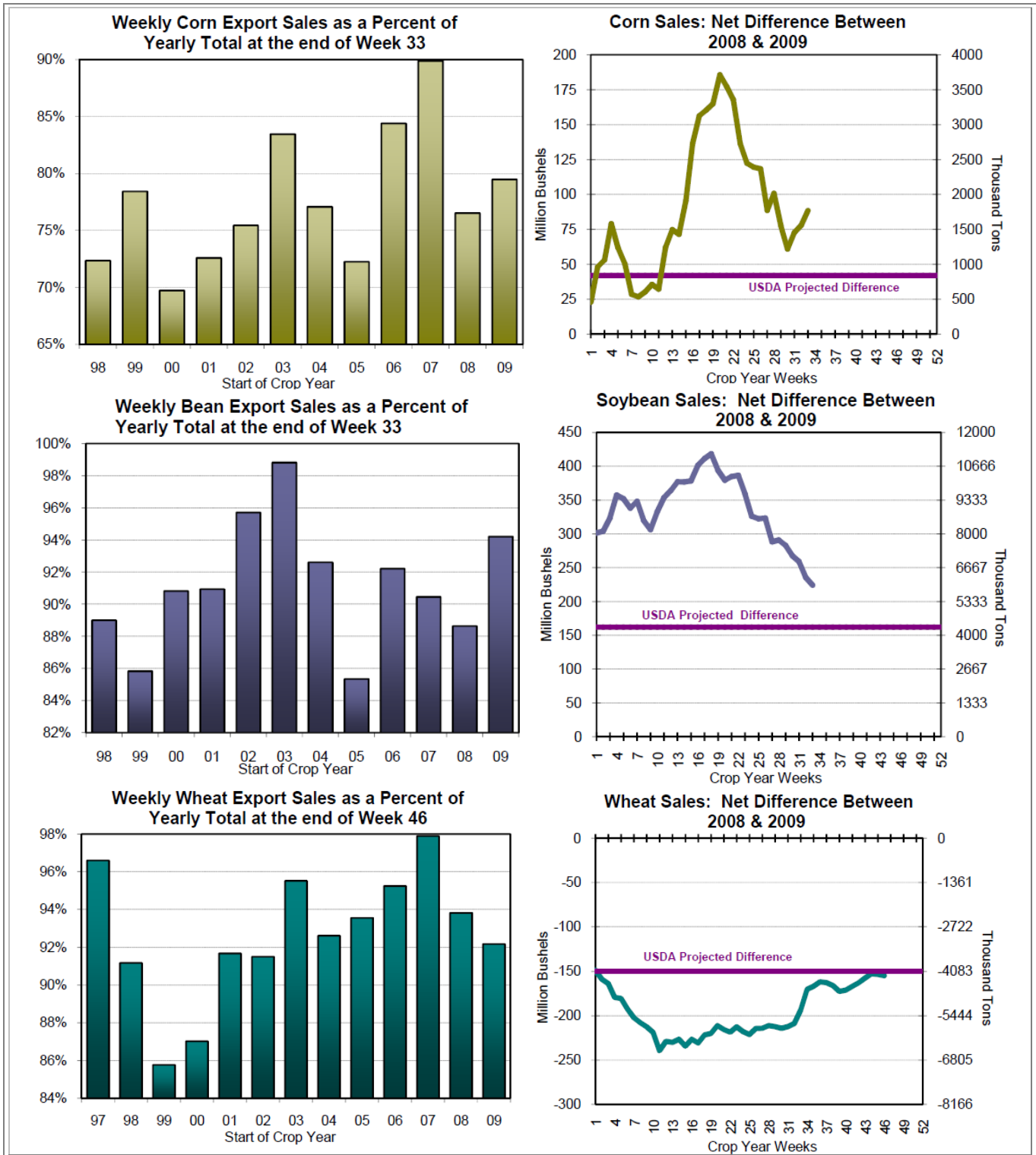
**Estimates include both old and new crop all commodities

EXPORT ANALYSIS

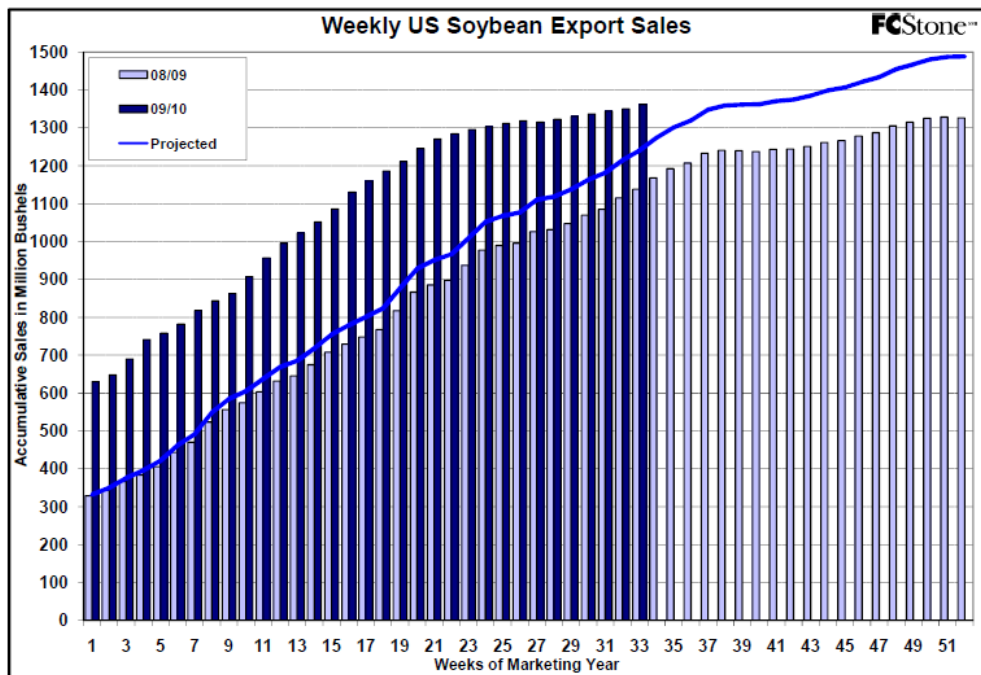
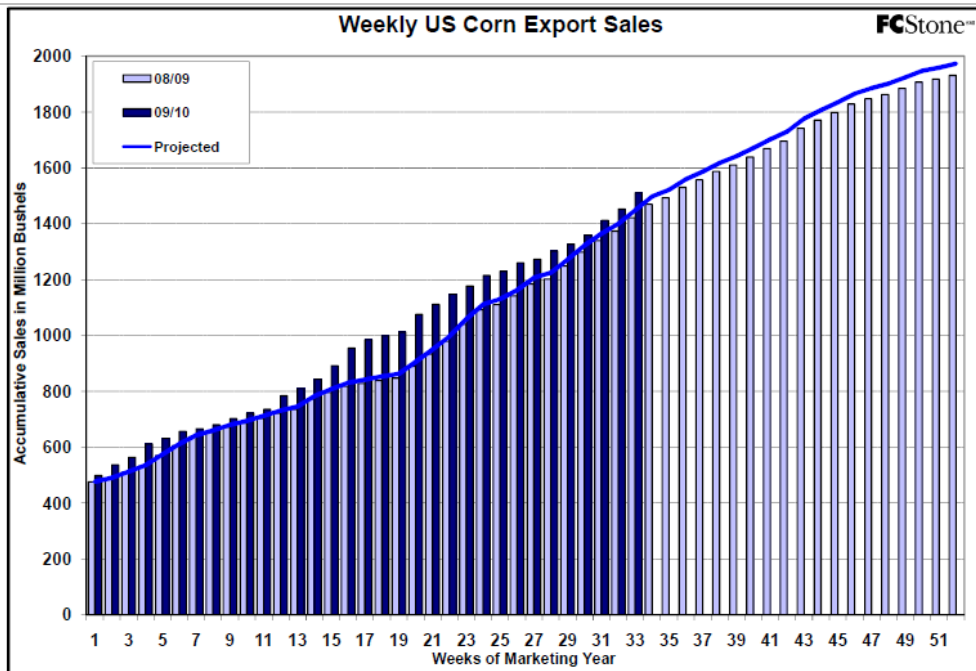
Week Ending	<u>Corn</u>		<u>Soybeans</u>		<u>Wheat</u>		<u>Soymeal</u>	<u>Soyoil</u>
	000 tons	mil bu	000 tons	mil bu	000 tons	mil bu	000 tons	000 tons
YTD Sales	38361	1510	37049	1361	21699	797	8248	1156
YTD Sales (LY)	36115	1422	30955	1137	25917	952	5181	588
USDA Yearly Estimate**	48262	1900	39327	1445	23542	865	9243	1470
Weeks Left in Crop Year	19	19	19	19	6	6	24	24
Needed to Reach USDA Total	9901	390	2278	84	1843	68	995	314
Needed Weekly to Reach USDA	521.1	20.5	119.9	4.4	307.1	11.3	41.5	13.1

** Meal projection does not include hulls

The information contained herein was obtained from sources believed to be reliable, but cannot be guaranteed. FC Stone may have contributed to this report. All examples given are strictly hypothetical and neither the information, nor any opinion expressed, constitutes a solicitation to market commodities or buy or sell futures or options on futures. Past financial performance and results are not indicative of, nor do they guarantee, future performance. Commodity marketing and trading has inherent risks. Trading and/or marketing decisions, as well as any gains or losses thereof, are the sole responsibility of the commodity owner, producer, and or account holder. Minnesota West Ag. Services, LLC, its principals and employees assume no liability for any use of any information contained herein. Reproduction without authorization is forbidden.



The information contained herein was obtained from sources believed to be reliable, but cannot be guaranteed. FC Stone may have contributed to this report. All examples given are strictly hypothetical and neither the information, nor any opinion expressed, constitutes a solicitation to market commodities or buy or sell futures or options on futures. Past financial performance and results are not indicative of, nor do they guarantee, future performance. Commodity marketing and trading has inherent risks. Trading and/or marketing decisions, as well as any gains or losses thereof, are the sole responsibility of the commodity owner, producer, and or account holder. Minnesota West Ag. Services, LLC, its principals and employees assume no liability for any use of any information contained herein. Reproduction without authorization is forbidden.



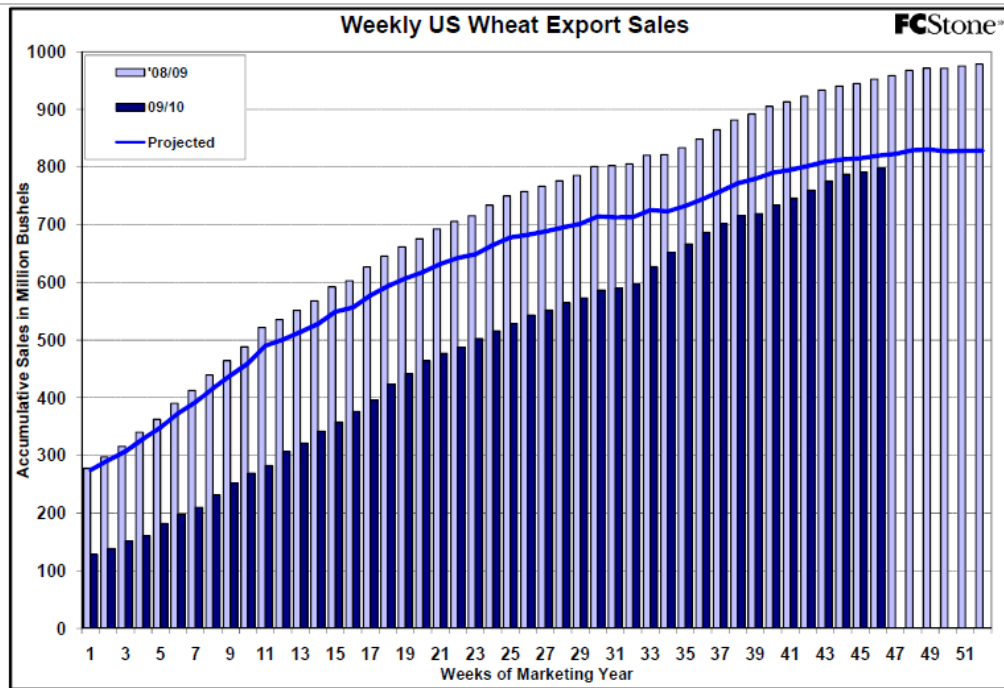
The information contained herein was obtained from sources believed to be reliable, but cannot be guaranteed. FC Stone may have contributed to this report. All examples given are strictly hypothetical and neither the information, nor any opinion expressed, constitutes a solicitation to market commodities or buy or sell futures or options on futures. Past financial performance and results are not indicative of, nor do they guarantee, future performance. Commodity marketing and trading has inherent risks. Trading and/or marketing decisions, as well as any gains or losses thereof, are the sole responsibility of the commodity owner, producer, and or account holder. Minnesota West Ag. Services, LLC, its principals and employees assume no liability for any use of any information contained herein. Reproduction without authorization is forbidden.



WEEKLY EXPORTS

David Scheibel
david@mnwestag.com
 Toll Free 1-877-365-3744
www.mnwestag.com

Thursday April 22, 2010



Estimated Funds Position

April 22, 2010

Funds 30-day		CORN			SOYBEANS			MEAL			OIL			CHI WHEAT			KC WHEAT		
		Daily	CFTC*	Net	Daily	CFTC*	Net	Daily	CFTC*	Net	Daily	CFTC*	Net	Daily	CFTC*	Net	Daily	CFTC*	Net
24-Mar	W	2,000		69,034	-5,000		22,476	-1,000		10,073	-2,000		14,834	0		-48,124	0		10,229
25-Mar	TH	-11,000		58,034	-8,000		14,476	-2,000		8,073	-2,000		12,834	-5,000		-54,124	-300		9,929
26-Mar	F	3,000		61,034	4,000		18,476	2,000		10,073	2,000		14,834	-1,000		-55,124	0		9,929
29-Mar	M	0		61,034	6,000		24,476	1,000		11,073	3,000		17,834	1,000		-54,124	0		9,929
30-Mar	T	-6,000	36,157	55,034	4,000	30,643	28,476	2,000	15,453	13,073	-4,000	10,481	13,834	4,000	-56,716	-50,124	0	6,590	9,929
31-Mar	W	-10,000		26,157	-11,000		19,643	-3,000		12,453	-3,000		7,481	-5,000		-61,716	-600		5,990
1-Apr	TH	-2,000		24,157	1,000		20,643	0		12,453	2,000		9,481	2,000		-59,716	300		6,290
5-Apr	M	3,000		27,157	-4,000		16,643	-1,000		11,453	2,000		11,481	-2,000		-61,716	0		6,290
6-Apr	T	3,000	18,115	30,157	4,000	8,221	20,643	1,000	9,531	12,453	4,000	20,974	15,481	4,000	-55,427	-57,716	500	4,372	6,790
7-Apr	W	15,000		33,115	4,000		12,221	1,000		10,531	2,000		22,974	5,000		-50,427	0		4,372
8-Apr	TH	-12,000		21,115	-4,000		8,221	-1,000		9,531	-2,000		20,974	-4,000		-54,427	-400		3,972
9-Apr	F	-5,000		16,115	4,000		12,221	2,000		11,531	2,000		22,974	-3,000		-57,427	0		3,972
12-Apr	M	6,000		22,115	6,000		18,221	2,000		13,531	-3,000		19,974	5,000		-52,427	500		4,472
13-Apr	T	6,000	17,626	28,115	5,000	29,228	23,221	2,000	9,630	15,531	1,000	32,214	20,974	4,000	-50,655	-48,427	500	4,966	4,972
14-Apr	W	8,000		25,626	3,000		32,228	-1,000		8,630	2,000		34,214	-1,000		-51,655	200		5,166
15-Apr	TH	7,000		32,626	7,000		39,228	3,000		11,630	2,000		36,214	4,000		-47,655	300		5,466
16-Apr	F	3,000		35,626	3,000		42,228	1,000		12,630	-2,000		34,214	7,000		-40,655	0		5,466
19-Apr	M	-16,000		19,626	-6,000		36,228	0		12,630	-4,000		30,214	-7,000		-47,655	-500		4,966
20-Apr	T	11,000		30,626	4,000		40,228	1,000		13,630	1,000		31,214	6,000		-41,655	200		5,166
21-Apr	W	5,000		35,626	6,000		46,228	2,000		15,630	-2,000		29,214	2,000		-39,655	0		5,166
22-Apr	TH	3,000		38,626	5,000		51,228	1,000		16,630	1,000		30,214	4,000		-35,655	300		5,466

The information contained herein was obtained from sources believed to be reliable, but cannot be guaranteed. FC Stone may have contributed to this report. All examples given are strictly hypothetical and neither the information, nor any opinion expressed, constitutes a solicitation to market commodities or buy or sell futures or options on futures. Past financial performance and results are not indicative of, nor do they guarantee, future performance. Commodity marketing and trading has inherent risks. Trading and/or marketing decisions, as well as any gains or losses thereof, are the sole responsibility of the commodity owner, producer, and or account holder. Minnesota West Ag. Services, LLC, its principals and employees assume no liability for any use of any information contained herein. Reproduction without authorization is forbidden.