



WEEKLY EXPORTS

David Scheibel
david@mnwestag.com
 Toll Free 1-877-365-3744
www.mnwestag.com

Thursday April 29, 2010

WEEKLY EXPORT SALES

Week Ending	<u>Corn</u>				<u>Soybeans</u>				<u>Wheat</u>				<u>Soymeal</u>		<u>Soyoil</u>	
	000 tons		mil bu		000 tons		mil bu		000 tons		mil bu		000 tons		000 tons	
	09-10	10-11	09-10	10-11	09-10	10-11	09-10	10-11	09-10	10-11	09-10	10-11	09-10	10-11	09-10	10-11
02/18/10	401.3	50.8	15.8	2.0	239.5	2.7	8.8	0.1	375.6	32.7	13.8	1.2	81.9	0.0	40.2	0.0
02/25/10	762.0	71.1	30.0	2.8	182.3	187.8	6.7	6.9	100.7	2.7	3.7	0.1	85.7	3.2	15.9	0.0
03/04/10	338.6	0.3	13.3	0.0	-115.8	65.1	-4.3	2.4	407.9	40.5	15.0	1.5	1.9	0.3	-9.4	0.0
03/11/10	747.6	0.0	29.4	0.0	214.1	525.0	7.9	19.3	325.3	114.0	12.0	4.2	92.5	65.8	18.4	0.0
03/18/10	606.8	0.0	23.9	0.0	273.4	46.5	10.0	1.7	371.2	148.0	13.6	5.4	189.5	25.7	13.0	0.8
03/25/10	826.1	0.4	32.5	0.0	178.5	210.0	6.6	7.7	430.6	53.0	15.8	1.9	68.1	-11.3	14.0	0.0
04/01/10	1357.8	-59.8	53.5	-2.4	205.7	238.1	7.6	8.7	323.7	209.7	11.9	7.7	211.9	6.0	6.8	0.0
04/08/10	1006.3	140.9	39.6	5.5	158.0	293.2	5.8	10.8	101.1	310.8	3.7	11.4	85.0	16.3	13.5	0.0
04/15/10	1481.0	0.0	58.3	0.0	308.6	60.0	11.3	2.2	166.4	298.3	6.1	11.0	94.3	0.3	-1.9	0.0
04/22/10	1228.7	202.0	48.4	8.0	101.1	691.0	3.7	25.4	173.1	295.3	6.4	10.9	57.4	0.1	2.0	0.0
10 Wk Av	875.6	40.6	34.5	1.6	174.5	231.9	6.4	8.5	277.6	150.5	10.2	5.5	96.8	10.6	11.3	0.1

TRADE ESTIMATES**

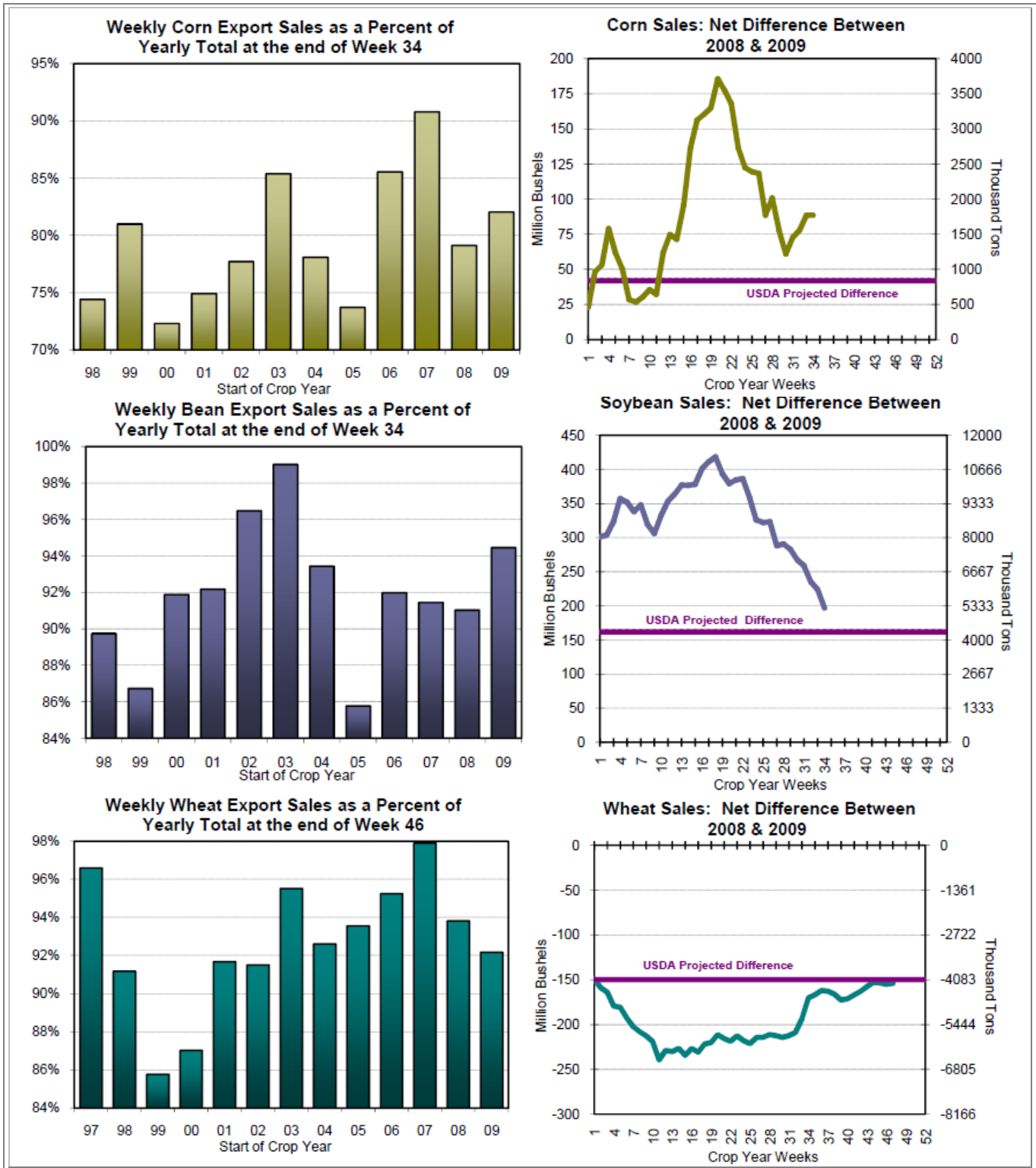
04/22/10	<u>Corn</u>		<u>Soybeans</u>		<u>Wheat</u>		<u>Soymeal</u>	<u>Soyoil</u>
	000 tons	mil bu	000 tons	mil bu	000 tons	mil bu	000 tons	000 tons
	900-1200	35.4-47.2	700-1000	25.7-36.7	300-400	11.0-14.7	75-200	5-15

**Estimates include both old and new crop all commodities

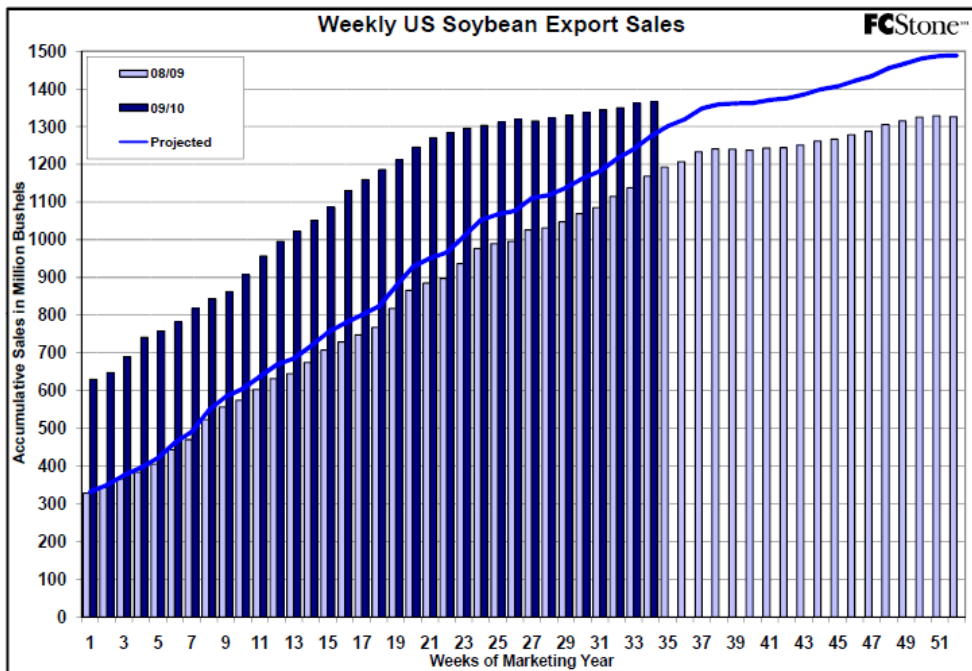
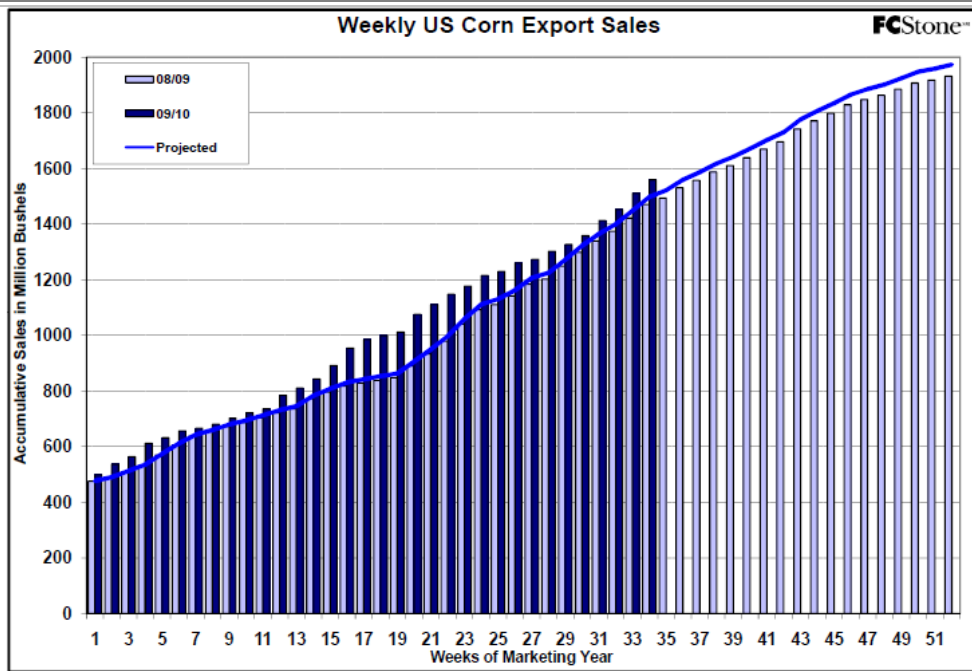
EXPORT ANALYSIS

Week Ending	<u>Corn</u>		<u>Soybeans</u>		<u>Wheat</u>		<u>Soymeal</u>	<u>Soyoil</u>
	000 tons	mil bu	000 tons	mil bu	000 tons	mil bu	000 tons	000 tons
YTD Sales	39590	1559	37150	1365	21872	804	8305	1158
YTD Sales (LY)	37340	1470	31790	1168	26061	958	5474	619
USDA Yearly Estimate**	48262	1900	39327	1445	23542	865	9243	1470
Weeks Left in Crop Year	18	18	18	18	5	5	23	23
Needed to Reach USDA Total	8672	341	2177	80	1669	61	938	312
Needed Weekly to Reach USDA	481.8	19.0	120.9	4.4	333.9	12.3	40.8	13.6

The information contained herein was obtained from sources believed to be reliable, but cannot be guaranteed. FC Stone may have contributed to this report. All examples given are strictly hypothetical and neither the information, nor any opinion expressed, constitutes a solicitation to market commodities or buy or sell futures or options on futures. Past financial performance and results are not indicative of, nor do they guarantee, future performance. Commodity marketing and trading has inherent risks. Trading and/or marketing decisions, as well as any gains or losses thereof, are the sole responsibility of the commodity owner, producer, and or account holder. Minnesota West Ag. Services, LLC, its principals and employees assume no liability for any use of any information contained herein. Reproduction without authorization is forbidden.



The information contained herein was obtained from sources believed to be reliable, but cannot be guaranteed. FC Stone may have contributed to this report. All examples given are strictly hypothetical and neither the information, nor any opinion expressed, constitutes a solicitation to market commodities or buy or sell futures or options on futures. Past financial performance and results are not indicative of, nor do they guarantee, future performance. Commodity marketing and trading has inherent risks. Trading and/or marketing decisions, as well as any gains or losses thereof, are the sole responsibility of the commodity owner, producer, and or account holder. Minnesota West Ag. Services, LLC, its principals and employees assume no liability for any use of any information contained herein. Reproduction without authorization is forbidden.



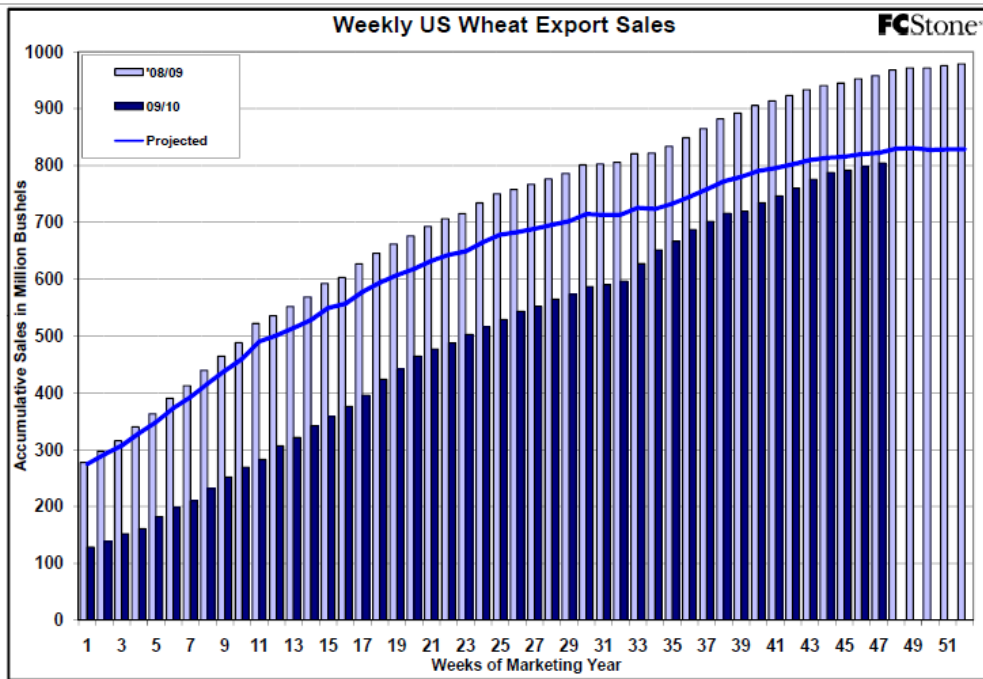
The information contained herein was obtained from sources believed to be reliable, but cannot be guaranteed. FC Stone may have contributed to this report. All examples given are strictly hypothetical and neither the information, nor any opinion expressed, constitutes a solicitation to market commodities or buy or sell futures or options on futures. Past financial performance and results are not indicative of, nor do they guarantee, future performance. Commodity marketing and trading has inherent risks. Trading and/or marketing decisions, as well as any gains or losses thereof, are the sole responsibility of the commodity owner, producer, and or account holder. Minnesota West Ag. Services, LLC, its principals and employees assume no liability for any use of any information contained herein. Reproduction without authorization is forbidden.



WEEKLY EXPORTS

David Scheibel
david@mnwestag.com
 Toll Free 1-877-365-3744
www.mnwestag.com

Thursday April 29, 2010



Estimated Funds Position

April 28, 2010

Funds 30-day	CORN			SOYBEANS			MEAL			OIL			CHI WHEAT			KC WHEAT		
	Daily	CFTC*	Net	Daily	CFTC*	Net	Daily	CFTC*	Net	Daily	CFTC*	Net	Daily	CFTC*	Net	Daily	CFTC*	Net
30-Mar T	-6,000	36,157	55,034	4,000	30,643	28,476	2,000	15,453	13,073	-4,000	10,481	13,834	4,000	-56,716	-50,124	0	6,580	9,929
31-Mar W	-10,000		26,157	-11,000		19,643	-3,000		12,453	-3,000		7,481	-5,000		-61,716	-600		5,990
1-Apr TH	-2,000		24,157	1,000		20,643	0		12,453	2,000		9,481	2,000		-59,716	300		6,290
5-Apr M	3,000		27,157	-4,000		16,643	-1,000		11,453	2,000		11,481	-2,000		-61,716	0		6,290
6-Apr T	3,000	18,115	30,157	4,000	8,221	20,643	1,000	9,531	12,453	4,000	20,974	15,481	4,000	-55,427	-57,716	500	4,372	6,790
7-Apr W	15,000		33,115	4,000		12,221	1,000		10,531	2,000		22,974	5,000		-50,427	0		4,372
8-Apr TH	-12,000		21,115	-4,000		8,221	-1,000		9,531	-2,000		20,974	-4,000		-54,427	-400		3,972
9-Apr F	-5,000		16,115	4,000		12,221	2,000		11,531	2,000		22,974	-3,000		-57,427	0		3,972
12-Apr M	6,000		22,115	6,000		18,221	2,000		13,531	-3,000		19,974	5,000		-52,427	500		4,472
13-Apr T	6,000	17,626	28,115	5,000	29,228	23,221	2,000	9,630	15,531	1,000	32,214	20,974	4,000	-50,655	-48,427	500	4,966	4,972
14-Apr W	8,000		25,626	3,000		32,228	-1,000		8,630	2,000		34,214	-1,000		-51,655	200		5,166
15-Apr TH	7,000		32,626	7,000		39,228	3,000		11,630	2,000		36,214	4,000		-47,655	300		5,466
16-Apr F	3,000		35,626	3,000		42,228	1,000		12,630	-2,000		34,214	7,000		-40,655	0		5,466
19-Apr M	-16,000		19,626	-6,000		36,228	0		12,630	-4,000		30,214	-7,000		-47,655	-500		4,966
20-Apr T	11,000	47,368	30,626	4,000	56,292	40,228	1,000	20,427	13,630	1,000	19,842	31,214	6,000	-44,406	-41,655	200	10,243	5,166
21-Apr W	5,000		52,368	6,000		62,292	2,000		22,427	-2,000		17,842	2,000		-42,406	0		10,243
22-Apr TH	3,000		55,368	5,000		67,292	1,000		23,427	1,000		18,842	4,000		-38,406	300		10,543
23-Apr F	-14,000		41,368	-5,000		62,292	-2,000		21,427	4,000		22,842	-5,000		-43,406	0		10,543
26-Apr M	-2,000		39,368	-1,000		61,292	2,000		23,427	-2,000		20,842	-5,000		-48,406	-200		10,343
27-Apr T	-9,000		30,368	-6,000		55,292	-2,000		21,427	-3,000		17,842	-2,000		-50,406	0		10,343
28-Apr W	15,000		45,368	0		55,292	1,000		22,427	-4,000		13,842	-2,000		-52,406	0		10,343

The information contained herein was obtained from sources believed to be reliable, but cannot be guaranteed. FC Stone may have contributed to this report. All examples given are strictly hypothetical and neither the information, nor any opinion expressed, constitutes a solicitation to market commodities or buy or sell futures or options on futures. Past financial performance and results are not indicative of, nor do they guarantee, future performance. Commodity marketing and trading has inherent risks. Trading and/or marketing decisions, as well as any gains or losses thereof, are the sole responsibility of the commodity owner, producer, and or account holder. Minnesota West Ag. Services, LLC, its principals and employees assume no liability for any use of any information contained herein. Reproduction without authorization is forbidden.