



WEEKLY EXPORTS

David Scheibel
david@mnwestag.com
 Toll Free 1-877-365-3744
www.mnwestag.com

Thursday May 27, 2010

WEEKLY EXPORT SALES

Week Ending	<u>Corn</u>				<u>Soybeans</u>				<u>Wheat</u>				<u>Soymeal</u>		<u>Soyoil</u>	
	000 tons		mil bu		000 tons		mil bu		000 tons		mil bu		000 tons		000 tons	
	09-10	10-11	09-10	10-11	09-10	10-11	09-10	10-11	09-10	10-11	09-10	10-11	09-10	10-11	09-10	10-11
03/18/10	606.8	0.0	23.9	0.0	273.4	46.5	10.0	1.7	371.2	148.0	13.6	5.4	189.5	25.7	13.0	0.8
03/25/10	826.1	0.4	32.5	0.0	178.5	210.0	6.6	7.7	430.6	53.0	15.8	1.9	68.1	-11.3	14.0	0.0
04/01/10	1357.8	-59.8	53.5	-2.4	205.7	238.1	7.6	8.7	323.7	209.7	11.9	7.7	211.9	6.0	6.8	0.0
04/08/10	1006.3	140.9	39.6	5.5	158.0	293.2	5.8	10.8	101.1	310.8	3.7	11.4	85.0	16.3	13.5	0.0
04/15/10	1481.0	0.0	58.3	0.0	308.6	60.0	11.3	2.2	166.4	298.3	6.1	11.0	94.3	0.3	-1.9	0.0
04/22/10	1228.7	202.0	48.4	8.0	101.1	691.0	3.7	25.4	173.1	295.3	6.4	10.9	57.4	0.1	2.0	0.0
04/29/10	1850.8	30.4	72.9	1.2	283.2	209.1	10.4	7.7	150.2	134.1	5.5	4.9	137.8	0.3	10.3	0.0
05/06/10	819.1	120.9	32.2	4.8	263.3	211.3	9.7	7.8	244.4	241.1	9.0	8.9	68.3	25.0	3.2	6.4
05/13/10	1354.1	239.0	53.3	9.4	478.5	86.0	17.6	3.2	250.5	205.2	9.2	7.5	32.5	23.1	3.5	0.0
05/20/10	1030.8	-174.0	40.6	-6.9	175.4	120.0	6.4	4.4	148.8	336.7	5.5	12.4	47.4	24.0	12.9	0.0
10 Wk Av	1156.2	50.0	45.5	2.0	242.6	216.5	8.9	8.0	236.0	223.2	8.7	8.2	99.2	11.0	7.7	0.7

TRADE ESTIMATES**

05/20/10	<u>Corn</u>		<u>Soybeans</u>		<u>Wheat</u>		<u>Soymeal</u>	<u>Soyoil</u>
	000 tons	mil bu	000 tons	mil bu	000 tons	mil bu	000 tons	000 tons
	1000-1300	39.4-51.2	450-650	16.5-23.9	350-450	12.9-16.5	100-150	5-15

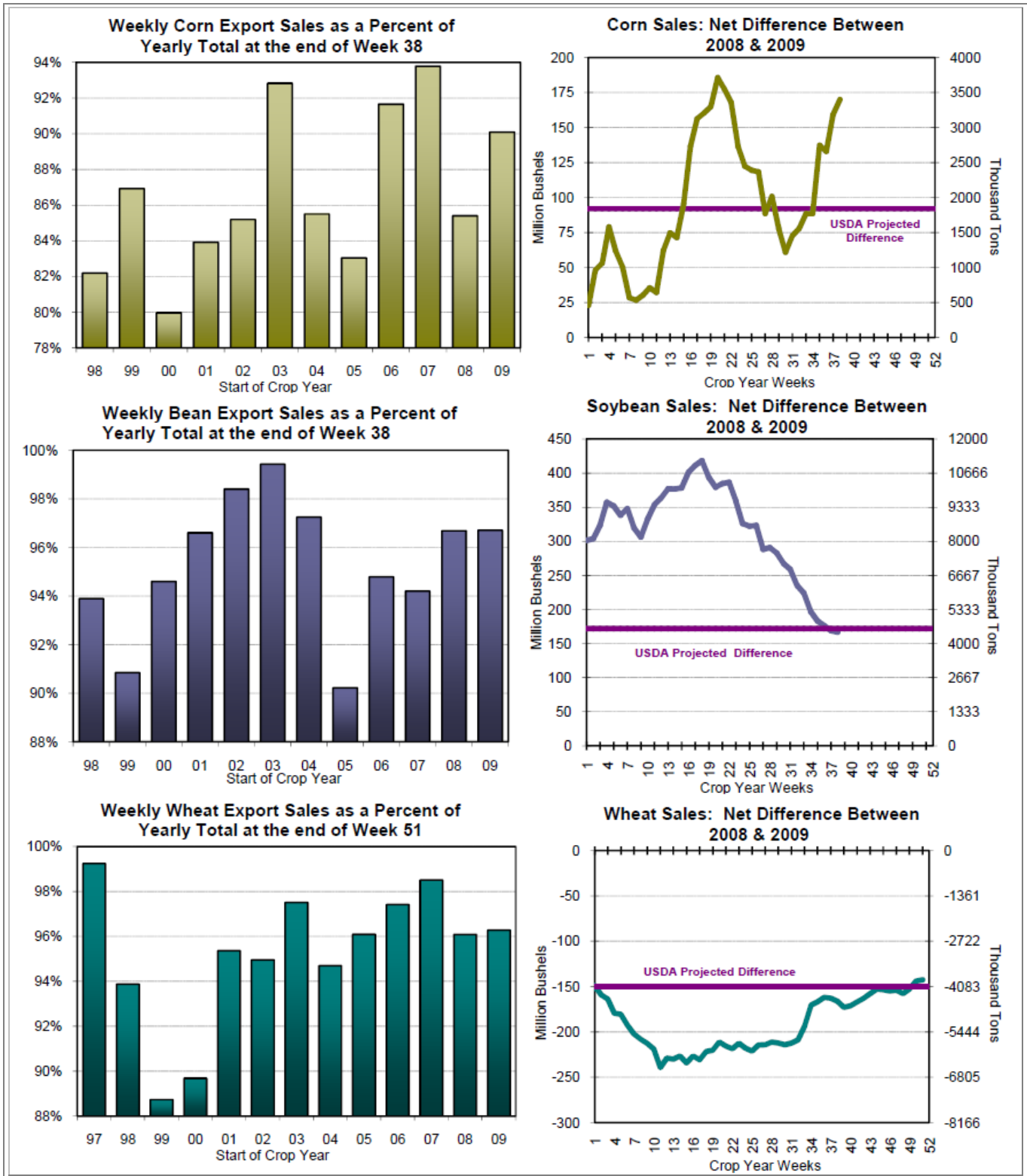
**Estimates include both old and new crop all commodities

EXPORT ANALYSIS

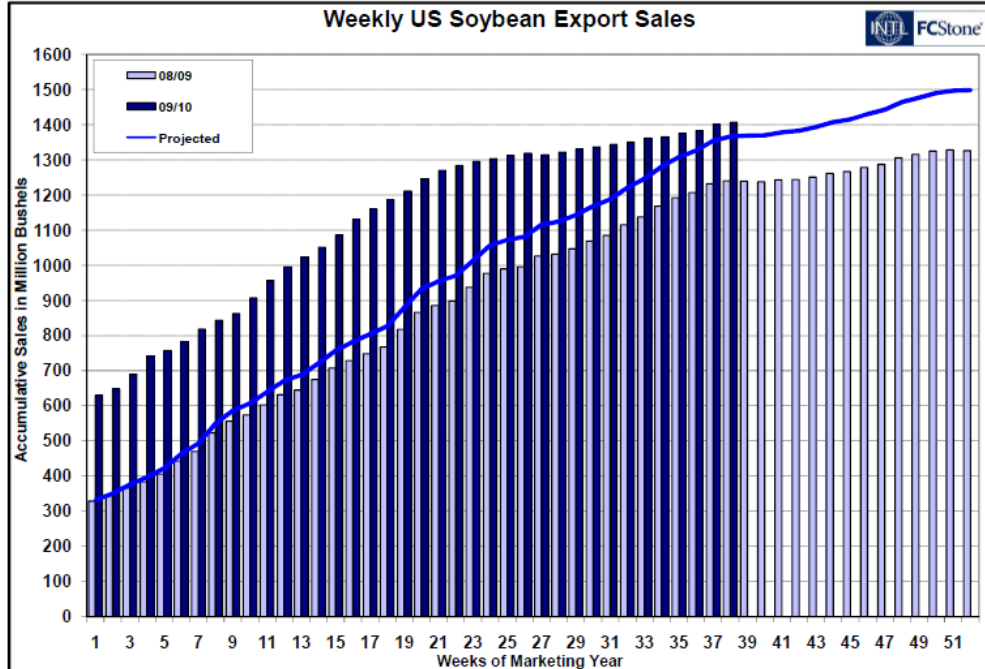
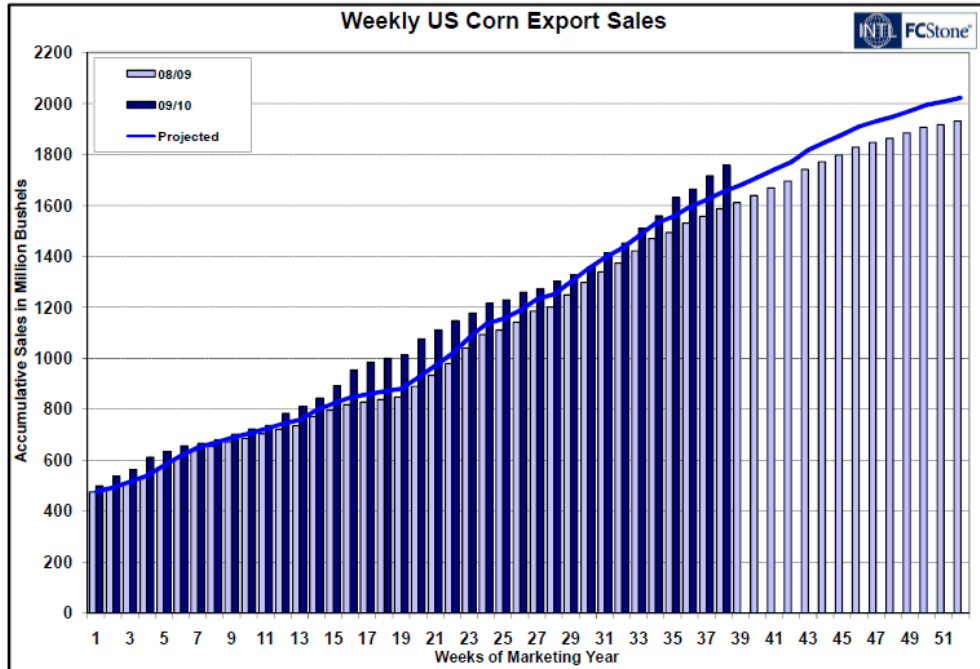
Week Ending	<u>Corn</u>		<u>Soybeans</u>		<u>Wheat</u>		<u>Soymeal</u>	<u>Soyoil</u>
	000 tons	mil bu	000 tons	mil bu	000 tons	mil bu	000 tons	000 tons
YTD Sales	44626	1757	38295	1407	22666	833	8591	1188
YTD Sales (LY)	40305	1587	33760	1240	26543	975	6274	683
USDA Yearly Estimate**	49532	1950	39599	1455	23542	865	9906	1470
Weeks Left in Crop Year	14	14	14	14	1	1	19	19
Needed to Reach USDA Total	4906	193	1304	48	876	32	1315	282
Needed Weekly to Reach USDA	350.5	13.8	93.2	3.4	875.5	32.2	69.2	14.8

** Meal projection does not include hulls

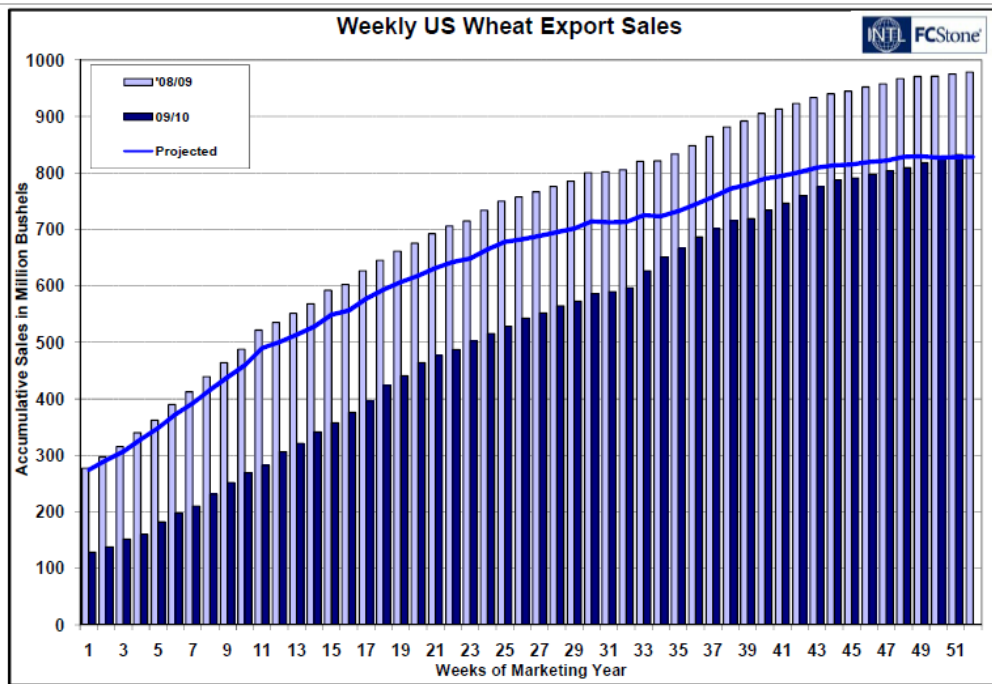
The information contained herein was obtained from sources believed to be reliable, but cannot be guaranteed. FC Stone may have contributed to this report. All examples given are strictly hypothetical and neither the information, nor any opinion expressed, constitutes a solicitation to market commodities or buy or sell futures or options on futures. Past financial performance and results are not indicative of, nor do they guarantee, future performance. Commodity marketing and trading has inherent risks. Trading and/or marketing decisions, as well as any gains or losses thereof, are the sole responsibility of the commodity owner, producer, and or account holder. Minnesota West Ag. Services, LLC, its principals and employees assume no liability for any use of any information contained herein. Reproduction without authorization is forbidden.



The information contained herein was obtained from sources believed to be reliable, but cannot be guaranteed. FC Stone may have contributed to this report. All examples given are strictly hypothetical and neither the information, nor any opinion expressed, constitutes a solicitation to market commodities or buy or sell futures or options on futures. Past financial performance and results are not indicative of, nor do they guarantee, future performance. Commodity marketing and trading has inherent risks. Trading and/or marketing decisions, as well as any gains or losses thereof, are the sole responsibility of the commodity owner, producer, and or account holder. Minnesota West Ag. Services, LLC, its principals and employees assume no liability for any use of any information contained herein. Reproduction without authorization is forbidden.



The information contained herein was obtained from sources believed to be reliable, but cannot be guaranteed. FC Stone may have contributed to this report. All examples given are strictly hypothetical and neither the information, nor any opinion expressed, constitutes a solicitation to market commodities or buy or sell futures or options on futures. Past financial performance and results are not indicative of, nor do they guarantee, future performance. Commodity marketing and trading has inherent risks. Trading and/or marketing decisions, as well as any gains or losses thereof, are the sole responsibility of the commodity owner, producer, and or account holder. Minnesota West Ag. Services, LLC, its principals and employees assume no liability for any use of any information contained herein. Reproduction without authorization is forbidden.



Estimated Funds Position

May 25, 2010

Funds 30-day		CORN			SOYBEANS			MEAL			OIL			CHI WHEAT			KC WHEAT		
		Daily	CFTC*	Net	Daily	CFTC*	Net	Daily	CFTC*	Net	Daily	CFTC*	Net	Daily	CFTC*	Net	Daily	CFTC*	Net
27-Apr	T	-9,000	38,370	30,368	-5,000	68,099	55,292	-2,000	36,029	21,427	-3,000	21,178	17,842	-2,000	-40,221	-50,406	0	13,088	10,343
28-Apr	W	15,000		53,370	0		68,099	1,000		37,029	-4,000		17,178	-2,000		-42,221	0		13,088
29-Apr	TH	17,000		70,370	3,000		71,099	0		37,029	2,000		19,178	4,000		-38,221	800		13,888
30-Apr	F	10,000		80,370	3,000		74,099	1,000		38,029	-3,000		16,178	3,000		-35,221	200		14,088
3-May	M	-6,000		74,370	-4,000		70,099	-1,000		37,029	1,000		17,178	-2,000		-37,221	0		14,088
4-May	T	-4,000	97,077	70,370	2,000	66,948	72,099	1,000	36,051	38,029	-2,000	1,338	15,178	4,000	-33,745	-33,221	400	15,515	14,488
5-May	W	6,000		103,077	-4,000		62,948	-2,000		34,051	3,000		4,338	1,000		-32,745	0		15,515
6-May	TH	4,000		107,077	-7,000		55,948	-2,000		32,051	-3,000		1,338	-4,000		-36,745	0		15,515
7-May	F	2,000		109,077	3,000		58,948	0		32,051	2,000		3,338	-1,000		-37,745	300		15,815
10-May	M	-3,000		106,077	2,000		60,948	0		32,051	-1,000		2,338	-5,000		-42,745	0		15,815
11-May	T	10,000	116,732	116,077	3,000	47,325	63,948	1,000	30,179	33,051	-1,000	2,647	1,338	1,000	-36,893	-41,745	0	16,559	15,815
12-May	W	3,000		119,732	-3,000		44,325	-2,000		28,179	1,000		3,647	-2,000		-38,893	0		16,559
13-May	TH	-8,000		111,732	-2,000		42,325	1,000		29,179	-2,000		1,647	-4,000		-42,893	0		16,559
14-May	F	-12,000		99,732	-3,000		39,325	-1,000		28,179	-3,000		-1,353	-4,000		-46,893	0		16,559
17-May	M	-7,000		92,732	-4,000		35,325	-1,000		27,179	-2,000		-3,353	-3,000		-49,893	0		16,559
18-May	T	6,000	110,881	98,732	-2,000	33,219	33,325	0	27,985	27,179	1,000	-8,221	-2,353	-2,000	-48,027	-51,893	0	10,877	16,559
19-May	W	-3,000		107,881	-1,000		32,219	-1,000		26,985	2,000		-6,221	1,000		-47,027	0		10,877
20-May	TH	3,000		110,881	2,000		34,219	1,000		27,985	-2,000		-8,221	0		-47,027	0		10,877
21-May	F	10,000		120,881	-2,000		32,219	0		27,985	-2,000		-10,221	2,000		-45,027	0		10,877
24-May	M	5,000		125,881	1,000		33,219	-1,000		26,985	2,000		-8,221	-3,000		-48,027	0		10,877
25-May	T	-10,000		0	-4,000		29,219	-1,000		25,985	-2,000		-10,221	-4,000		-52,027	0		10,877

The information contained herein was obtained from sources believed to be reliable, but cannot be guaranteed. FC Stone may have contributed to this report. All examples given are strictly hypothetical and neither the information, nor any opinion expressed, constitutes a solicitation to market commodities or buy or sell futures or options on futures. Past financial performance and results are not indicative of, nor do they guarantee, future performance. Commodity marketing and trading has inherent risks. Trading and/or marketing decisions, as well as any gains or losses thereof, are the sole responsibility of the commodity owner, producer, and or account holder. Minnesota West Ag. Services, LLC, its principals and employees assume no liability for any use of any information contained herein. Reproduction without authorization is forbidden.