



WEEKLY EXPORTS

David Scheibel

david@mnwestag.com

Toll Free 1-877-365-3744

www.mnwestag.com

Exports & Fund Positions

Thursday August 27, 2009

Exports exceed trade estimates

WEEKLY EXPORT SALES

Week Ending	mil bu <u>Corn</u>		mil bu <u>Soybeans</u>		mil bu <u>Wheat</u>		000 tons <u>Soymeal</u>		000 tons <u>Soyoil</u>	
	2008-09	2009-10	2008-09	2009-10	2009-10	2010-11	2008-09	2009-10	2008-09	2009-10
	06/18/09	27.0	9.9	1.0	7.9	13.5	0.0	79.6	228.8	6.9
06/25/09	45.5	4.6	7.1	9.2	8.9	0.0	-23.0	303.8	69.4	1.2
07/02/09	29.5	16.4	10.5	34.6	21.5	0.0	18.4	12.5	-60.2	98.0
07/09/09	27.5	18.4	4.9	20.2	15.5	0.0	62.6	4.3	48.1	42.0
07/16/09	29.8	22.7	11.8	14.0	12.6	0.0	157.6	35.1	17.5	-6.0
07/23/09	19.1	30.3	9.0	26.0	21.1	0.0	168.3	239.7	22.7	7.0
07/30/09	16.6	28.7	18.2	88.7	20.3	0.3	-57.6	160.0	80.9	1.2
08/06/09	21.3	11.5	9.5	28.0	17.6	0.0	40.7	15.2	5.2	0.0
08/13/09	22.7	33.8	10.1	21.4	13.2	1.3	110.8	45.5	-12.2	5.3
08/20/09	10.5	27.9	3.2	72.2	24.0	0.0	68.4	99.5	-0.4	3.5
0 Wk Ave	25.0	20.4	8.5	32.2	16.8	0.2	62.6	114.4	17.8	15.4

TRADE ESTIMATES**

	mil bu <u>Corn</u>	mil bu <u>Soybeans</u>	mil bu <u>Wheat</u>	000 tons <u>Soymeal</u>	000 tons <u>Soyoil</u>
08/20/09	29.5-47.2	27.6-58.8	11.0-18.4	50-200	5-20

**Estimates include both old and new crop all commodities

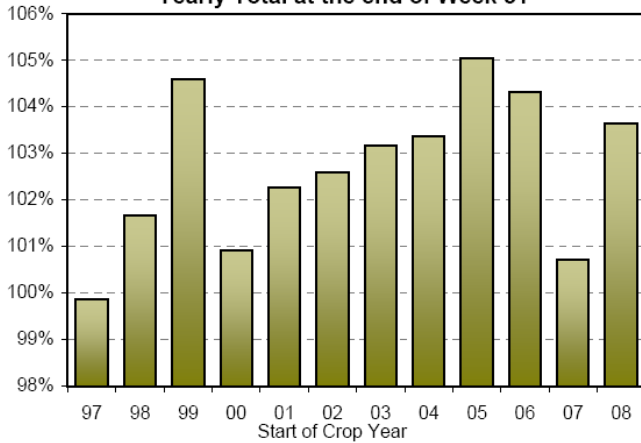
EXPORT ANALYSIS

Week Ending	mil bu <u>Corn</u>	mil bu <u>Soybeans</u>	mil bu <u>Wheat</u>	000 tons <u>Soymeal</u>	000 tons <u>Soyoil</u>
Year to Date Sales	1917	1328	306	7206	893
YTD Sales (Last Year)	2454	1150	535	7563	1116
USDA Yearly Estimate**	1850	1265	950	7868	1000
Weeks Left in Crop Year	1	1	41	5	5
Needed to Reach USDA Total	0	0	644	662	107
Needed Weekly to Reach USDA Total	0.0	0.0	15.7	132.5	21.4

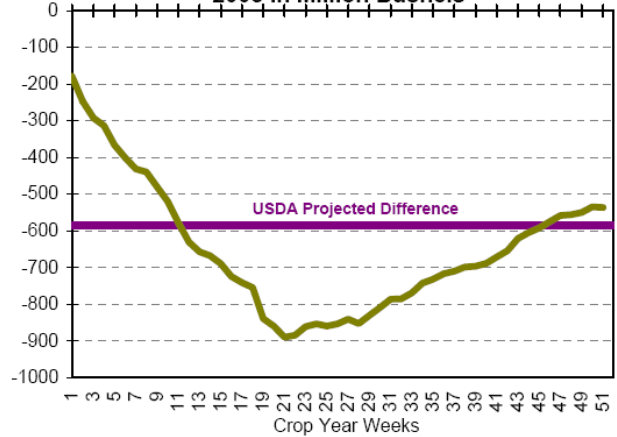
** Meal projection does not include hulls

The information contained herein was obtained from sources believed to be reliable, but cannot be guaranteed. FC Stone may have contributed to this report. All examples given are strictly hypothetical and neither the information, nor any opinion expressed, constitutes a solicitation to market commodities or buy or sell futures or options on futures. Past financial performance and results are not indicative of, nor do they guarantee, future performance. Commodity marketing and trading has inherent risks. Trading and/or marketing decisions, as well as any gains or losses thereof, are the sole responsibility of the commodity owner, producer, and or account holder. Minnesota West Ag. Services, LLC, its principals and employees assume no liability for any use of any information contained herein. Reproduction without authorization is forbidden.

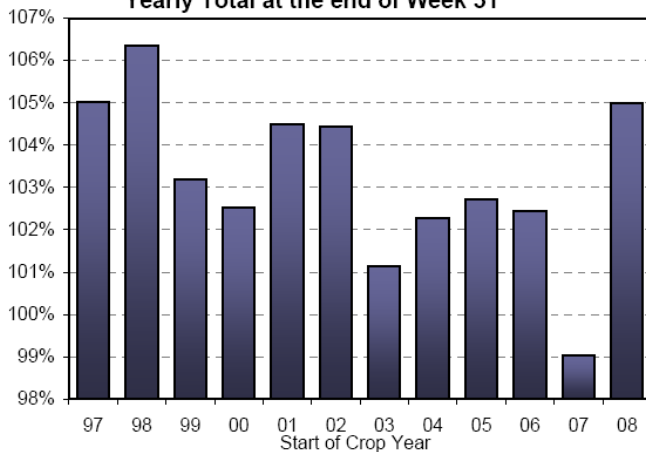
Weekly Corn Export Sales as a Percent of Yearly Total at the end of Week 51



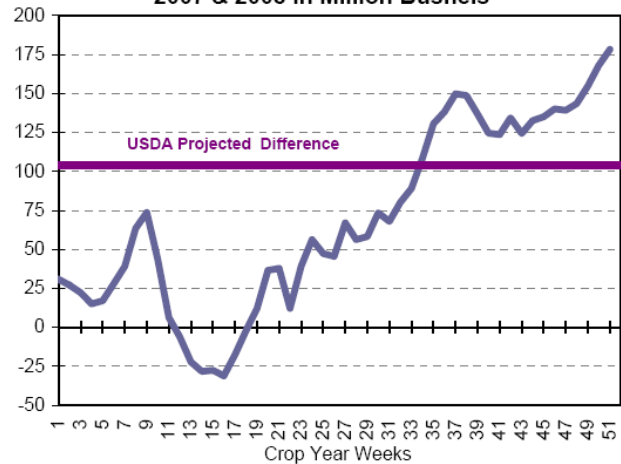
Corn Sales: Net Difference Between 2007 & 2008 in Million Bushels



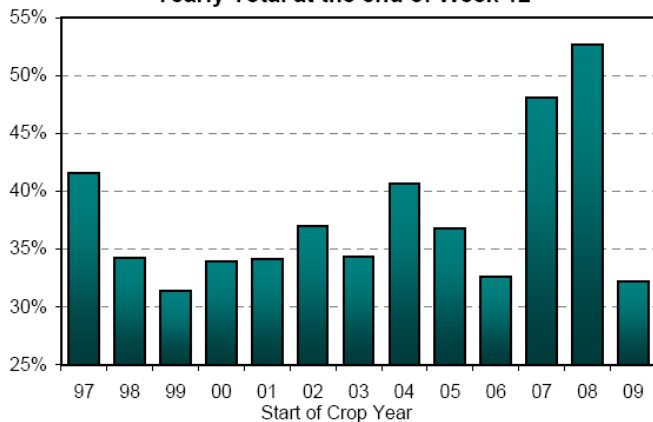
Weekly Bean Export Sales as a Percent of Yearly Total at the end of Week 51



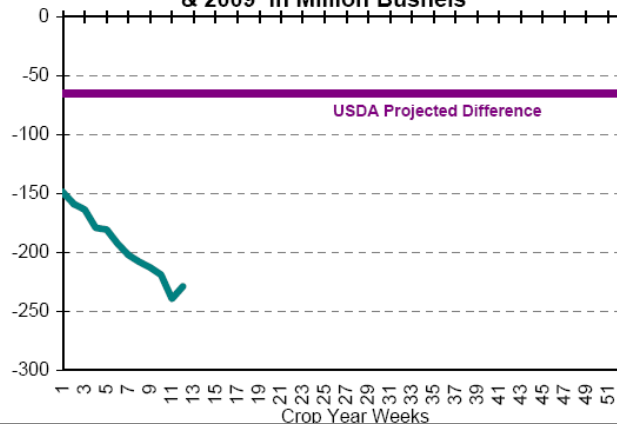
Soybean Sales: Net Difference Between 2007 & 2008 in Million Bushels



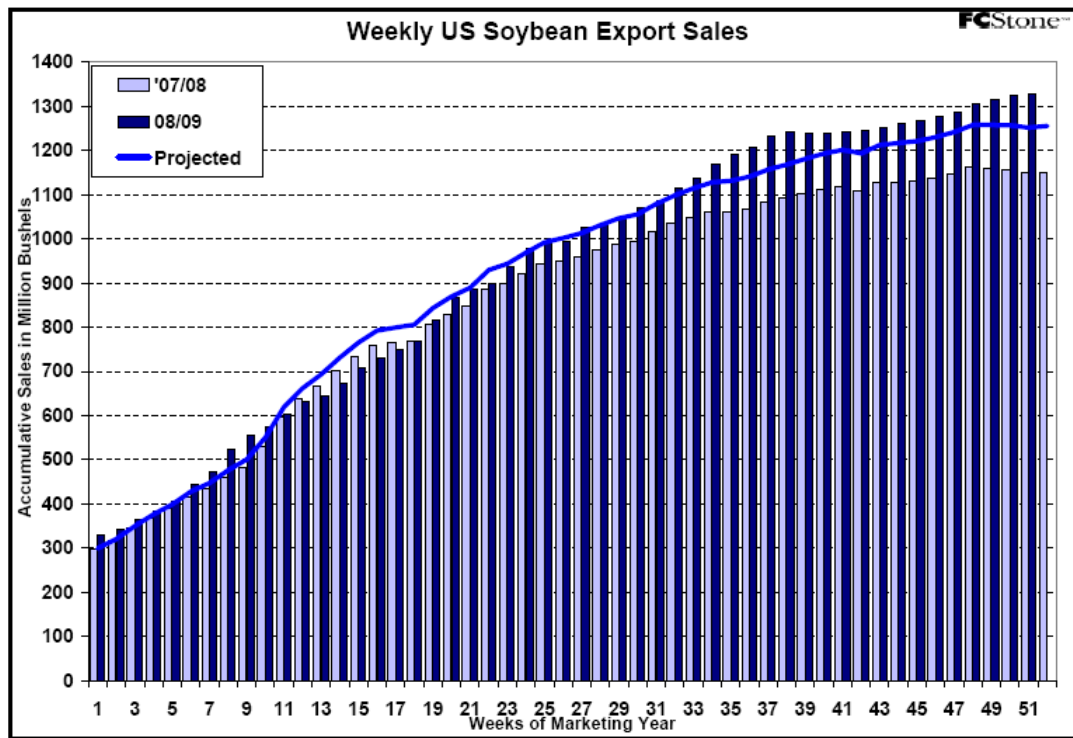
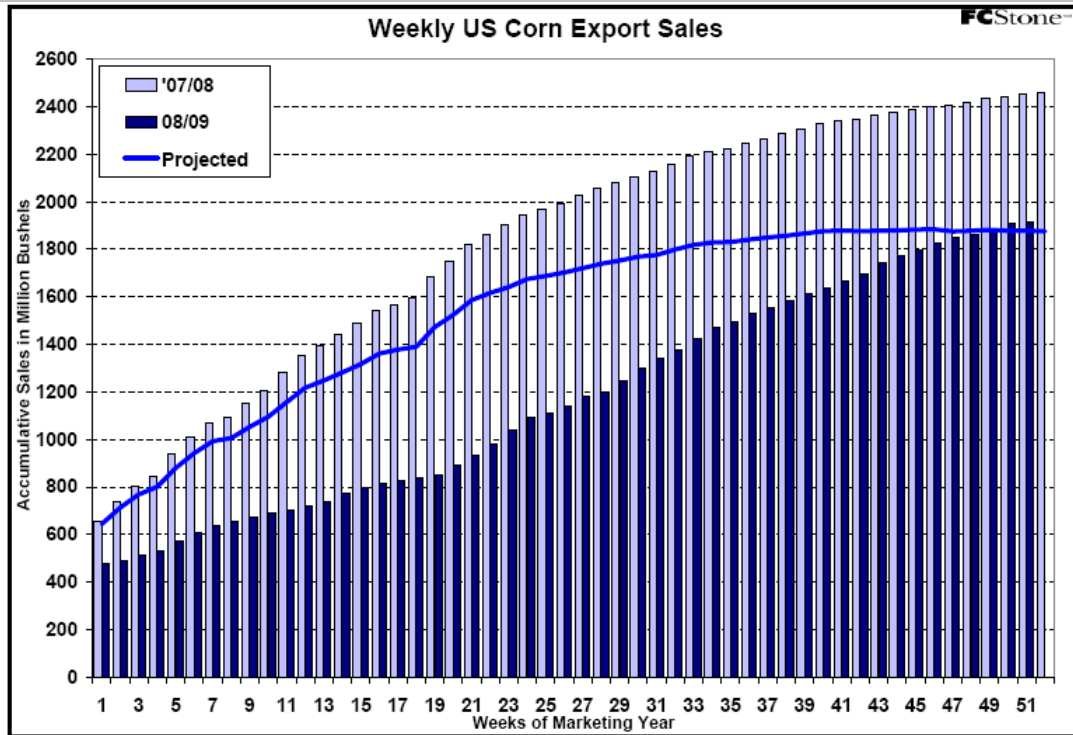
Weekly Wheat Export Sales as a Percent of Yearly Total at the end of Week 12



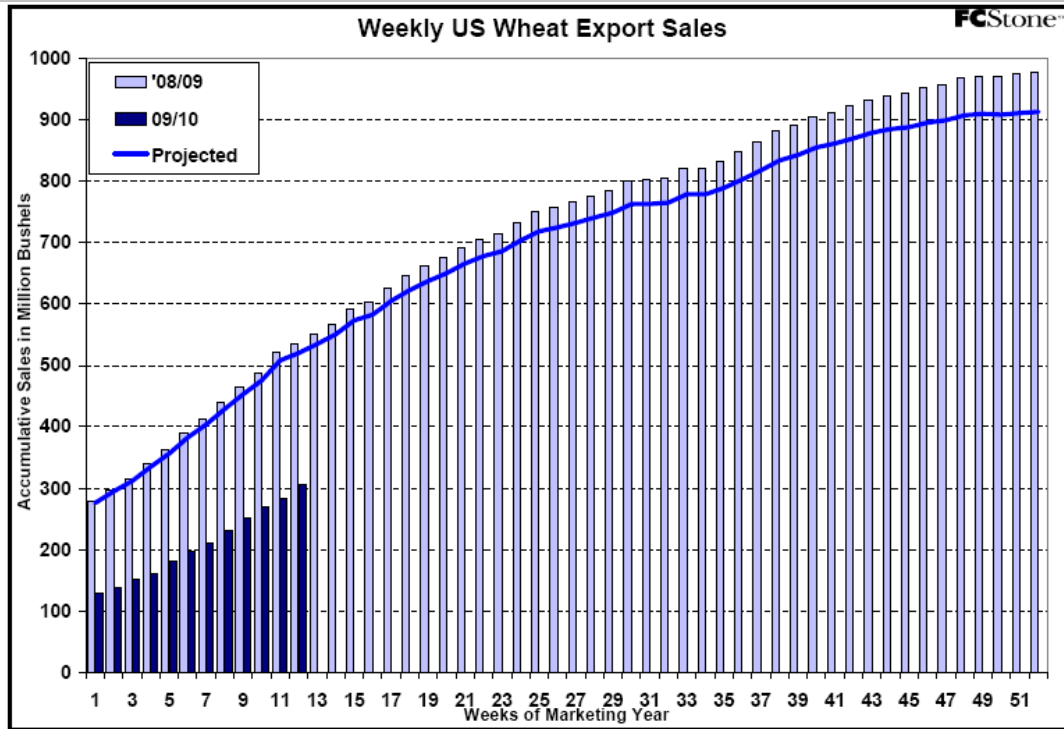
Wheat Sales: Net Difference Between 2008 & 2009 in Million Bushels



The information contained herein was obtained from sources believed to be reliable, but cannot be guaranteed. FC Stone may have contributed to this report. All examples given are strictly hypothetical and neither the information, nor any opinion expressed, constitutes a solicitation to market commodities or buy or sell futures or options on futures. Past financial performance and results are not indicative of, nor do they guarantee, future performance. Commodity marketing and trading has inherent risks. Trading and/or marketing decisions, as well as any gains or losses thereof, are the sole responsibility of the commodity owner, producer, and or account holder. Minnesota West Ag. Services, LLC, its principals and employees assume no liability for any use of any information contained herein. Reproduction without authorization is forbidden.



The information contained herein was obtained from sources believed to be reliable, but cannot be guaranteed. FC Stone may have contributed to this report. All examples given are strictly hypothetical and neither the information, nor any opinion expressed, constitutes a solicitation to market commodities or buy or sell futures or options on futures. Past financial performance and results are not indicative of, nor do they guarantee, future performance. Commodity marketing and trading has inherent risks. Trading and/or marketing decisions, as well as any gains or losses thereof, are the sole responsibility of the commodity owner, producer, and or account holder. Minnesota West Ag. Services, LLC, its principals and employees assume no liability for any use of any information contained herein. Reproduction without authorization is forbidden.



Estimated Fund Positions

August 26, 2009

Funds 30-day	CORN			SOYBEANS			MEAL			OIL			CHI WHEAT			KC WHEAT		
	Daily	CFTC*	Net	Daily	CFTC*	Net	Daily	CFTC*	Net	Daily	CFTC*	Net	Daily	CFTC*	Net	Daily	CFTC*	Net
29-Jul	W	-4,000	37,323	-3,000		64,684	0		36,250	-2,000		-17,177	-2,000		-24,092	0		17,100
30-Jul	TH	6,000	43,323	6,000		70,684	1,000		37,250	3,000		-14,177	3,000		-21,092	0		17,100
31-Jul	F	6,000	49,323	3,000		73,684	1,000		38,250	1,000		-13,177	3,000		-18,092	500		17,600
3-Aug	M	15,000	64,323	7,000		80,684	1,000		39,250	2,000		-11,177	9,000		-9,092	1,000		18,600
4-Aug	T	-4,000	65,103	60,323	1,000	81,548	81,684	0	43,835	39,250	-1,000	-218	-12,177	-4,000	-21,641	-13,092	-500	20,555
5-Aug	W	-9,000	56,103	56,103	3,000		84,548	1,000		44,835	0		-218	-5,000		-26,641	-400	20,255
6-Aug	TH	-11,000	45,103	45,103	-4,000		80,548	0		44,835	-1,000		-1,218	-5,000		-31,641	-500	19,755
7-Aug	F	-8,000	37,103	37,103	3,000		83,548	0		44,835	0		-1,218	-5,000		-36,641	-400	19,355
10-Aug	M	5,000	42,103	42,103	-4,000		79,548	-1,000		43,835	0		-1,218	3,000		-33,641	0	19,355
11-Aug	T	-4,000	71,585	38,103	4,000	90,747	83,548	1,000	46,152	44,835	2,000	4,304	782	-2,000	-26,628	-35,641	-300	15,988
12-Aug	W	5,000	76,585	76,585	4,000		94,747	-1,000		45,152	2,000		6,304	2,000		-24,628	0	15,985
13-Aug	TH	-5,000	71,585	71,585	-6,000		88,747	-1,000		44,152	-2,000		4,304	-2,000		-26,628	-200	15,788
14-Aug	F	-5,000	66,585	66,585	-5,000		83,747	-1,000		43,152	-1,000		3,304	1,000		-25,628	0	15,788
17-Aug	M	-8,000	58,585	58,585	-5,000		78,747	-1,000		42,152	-2,000		1,304	-3,000		-28,628	-200	15,588
18-Aug	T	-1,000	53,430	57,585	3,000	73,460	81,747	1,000	40,209	43,152	0	6,742	1,304	-1,000	-28,426	-29,628	0	15,722
19-Aug	W	5,000	58,430	58,430	-2,000		71,460	0		40,209	1,000		7,742	-3,000		-31,426	0	15,722
20-Aug	TH	-4,000	54,430	54,430	-2,000		69,460	0		40,209	-1,000		6,742	2,000		-29,426	0	15,722
21-Aug	F	4,000	58,430	58,430	5,000		74,460	1,000		41,209	2,000		8,742	-4,000		-33,426	0	15,722
24-Aug	M	6,000	64,430	64,430	4,000		78,460	1,000		42,209	1,000		9,742	4,000		-29,426	0	15,722
25-Aug	T	-7,000	57,430	57,430	-4,000		74,460	0		42,209	-2,000		7,742	-1,000		-30,426	300	16,022
26-Aug	W	-2,000	55,430	55,430	-3,000		71,460	0		42,209	-1,000		6,742	3,000		-27,426	0	16,022

The information contained herein was obtained from sources believed to be reliable, but cannot be guaranteed. FC Stone may have contributed to this report. All examples given are strictly hypothetical and neither the information, nor any opinion expressed, constitutes a solicitation to market commodities or buy or sell futures or options on futures. Past financial performance and results are not indicative of, nor do they guarantee, future performance. Commodity marketing and trading has inherent risks. Trading and/or marketing decisions, as well as any gains or losses thereof, are the sole responsibility of the commodity owner, producer, and or account holder. Minnesota West Ag. Services, LLC, its principals and employees assume no liability for any use of any information contained herein. Reproduction without authorization is forbidden.