



WEEKLY EXPORTS

David Scheibel

david@mnwestag.com

Toll Free 1-877-365-3744

www.mnwestag.com

Exports & Fund Positions

Thursday November 13, 2009

WEEKLY EXPORT SALES

Week Ending	mil bu <u>Corn</u>		mil bu <u>Soybeans</u>		mil bu <u>Wheat</u>		000 tons <u>Soymeal</u>		000 tons <u>Soyoil</u>	
	2009-10	2010-11	2009-10	2010-11	2009-10	2010-11	2009-10	2010-11	2009-10	2010-11
	09/10/09	38.0	0.0	18.0	7.9	16.5	0.0	42.9	72.2	29.9
09/17/09	26.5	0.0	42.3	-7.9	18.6	-0.4	23.2	147.5	18.1	88.1
09/24/09	48.2	0.0	50.9	0.0	19.8	-4.1	5.9	60.9	52.8	144.7
10/01/09	20.5	0.0	16.6	0.0	28.2	0.0	123.3	21.3	48.3	6.9
10/08/09	24.9	0.0	24.0	0.0	17.6	0.0	466.1	0.1	24.0	0.0
10/15/09	9.2	0.6	36.3	0.0	23.1	2.1	115.7	0.0	23.3	0.0
10/22/09	14.5	0.0	25.4	0.0	12.8	0.7	176.2	3.2	9.2	0.0
10/29/09	22.2	0.3	19.2	0.1	10.5	0.0	116.7	0.0	6.9	0.0
11/05/09	19.2	0.0	46.8	0.0	15.1	0.0	224.1	0.1	5.8	0.0
11/12/09	13.9	0.0	49.6	0.0	13.3	0.0	357.5	10.3	12.4	0.0
10 Wk Ave	23.7	0.1	32.9	0.0	17.6	-0.2	165.2	31.6	23.1	22.3

TRADE ESTIMATES**

	mil bu <u>Corn</u>	mil bu <u>Soybeans</u>	mil bu <u>Wheat</u>	000 tons <u>Soymeal</u>	000 tons <u>Soyoil</u>
11/12/09	17.7-21.7	27.6-34.9	12.9-16.5	125-200	7-15

**Estimates include both old and new crop all commodities

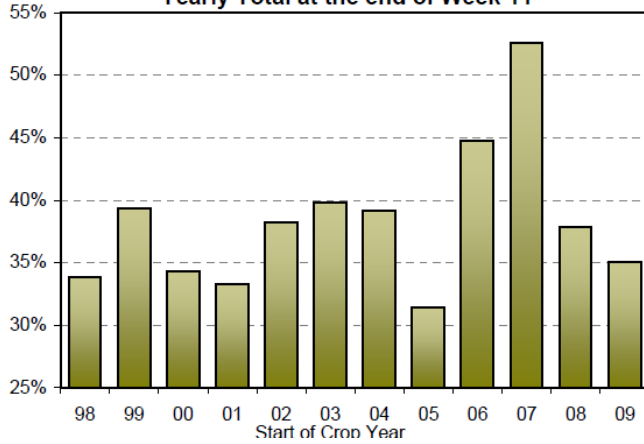
EXPORT ANALYSIS

Week Ending	mil bu <u>Corn</u>	mil bu <u>Soybeans</u>	mil bu <u>Wheat</u>	000 tons <u>Soymeal</u>	000 tons <u>Soyoil</u>
Year to Date Sales	736	957	516	4471	666
YTD Sales (Last Year)	704	603	734	2667	187
USDA Yearly Estimate**	2100	1325	875	8492	1470
Weeks Left in Crop Year	41	41	30	46	46
Needed to Reach USDA Total	1364	368	359	4021	804
Needed Weekly to Reach USDA Total	33.3	9.0	12.0	87.4	17.5

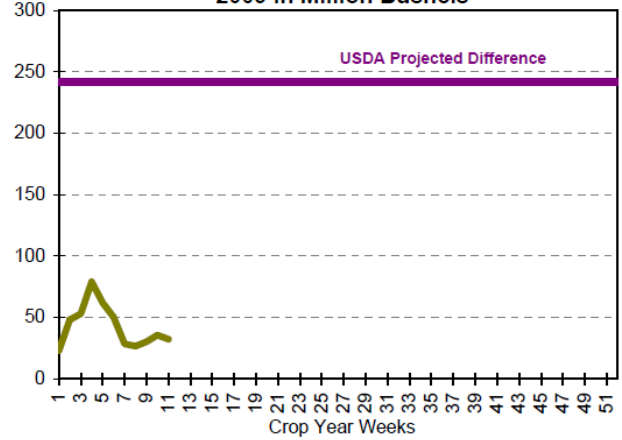
** Meal projection does not include hulls

The information contained herein was obtained from sources believed to be reliable, but cannot be guaranteed. FC Stone may have contributed to this report. All examples given are strictly hypothetical and neither the information, nor any opinion expressed, constitutes a solicitation to market commodities or buy or sell futures or options on futures. Past financial performance and results are not indicative of, nor do they guarantee, future performance. Commodity marketing and trading has inherent risks. Trading and/or marketing decisions, as well as any gains or losses thereof, are the sole responsibility of the commodity owner, producer, and or account holder. Minnesota West Ag. Services, LLC, its principals and employees assume no liability for any use of any information contained herein. Reproduction without authorization is forbidden.

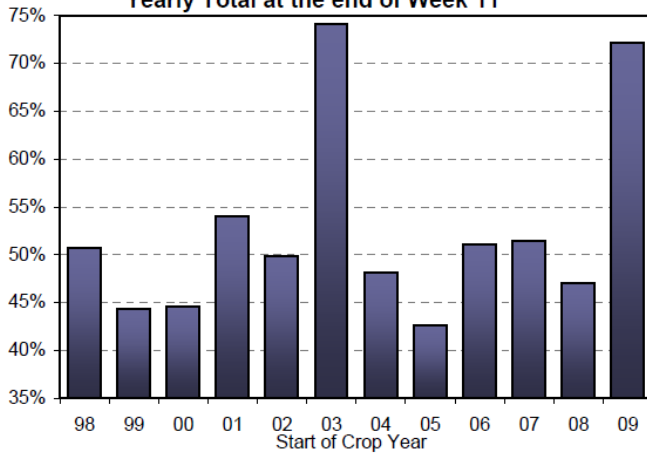
Weekly Corn Export Sales as a Percent of Yearly Total at the end of Week 11



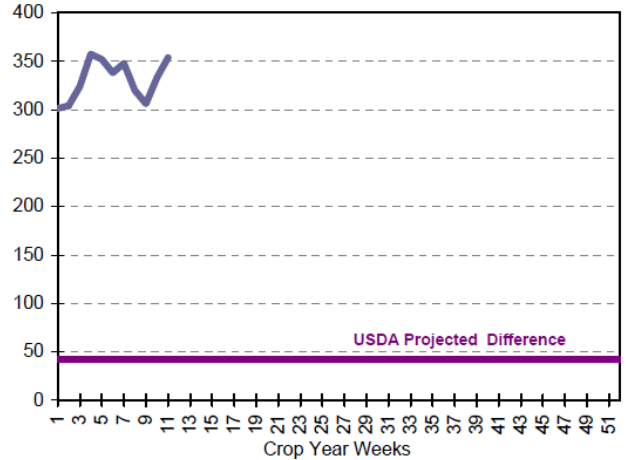
Corn Sales: Net Difference Between 2008 & 2009 in Million Bushels



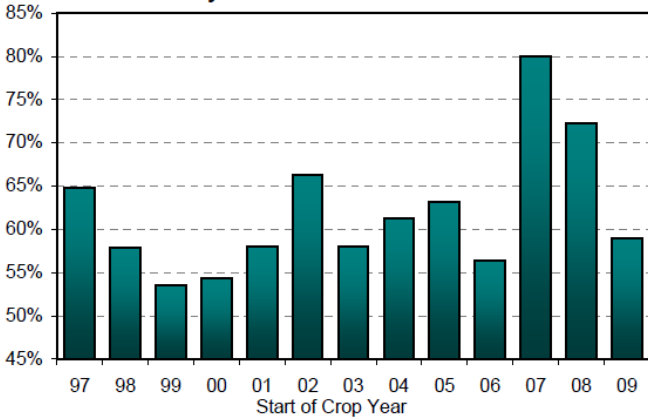
Weekly Bean Export Sales as a Percent of Yearly Total at the end of Week 11



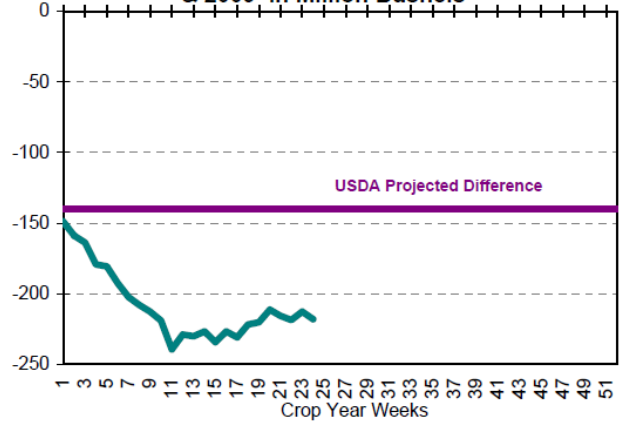
Soybean Sales: Net Difference Between 2008 & 2009 in Million Bushels



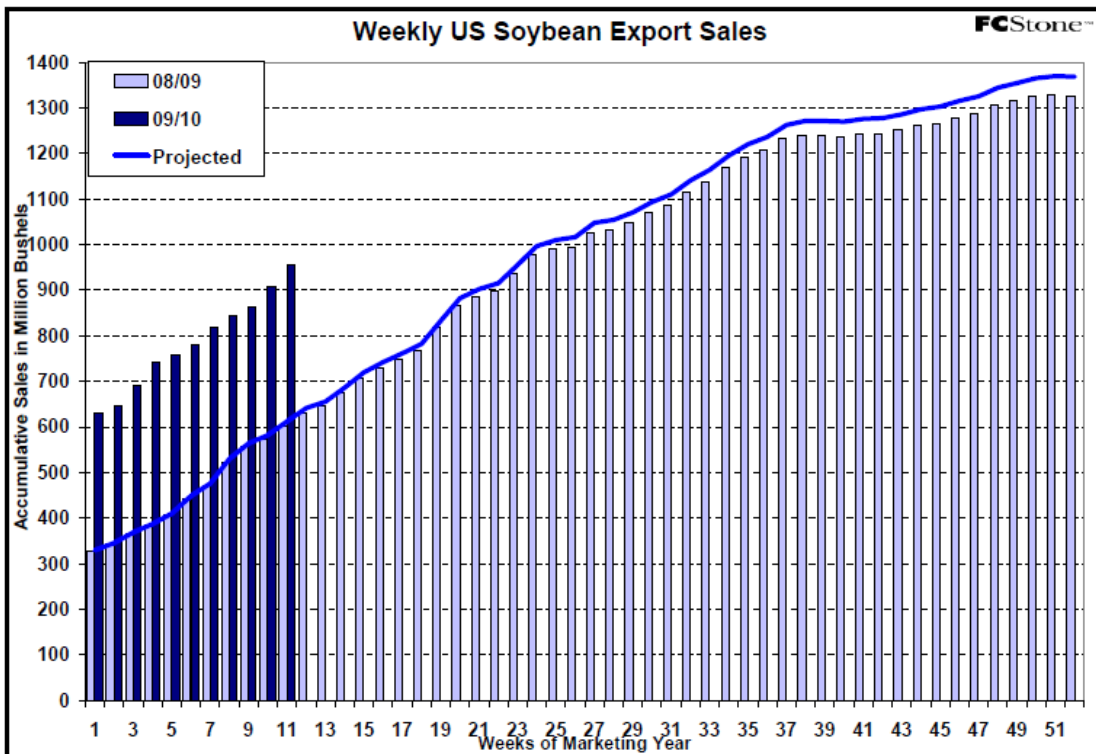
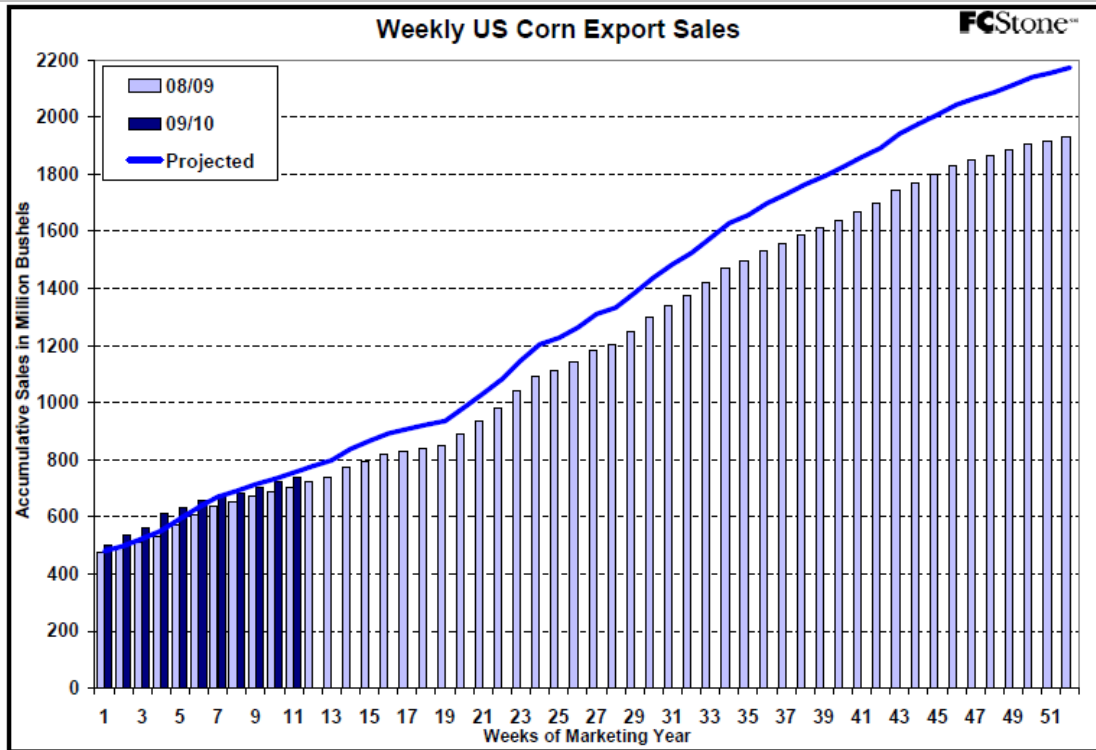
Weekly Wheat Export Sales as a Percent of Yearly Total at the end of Week 24



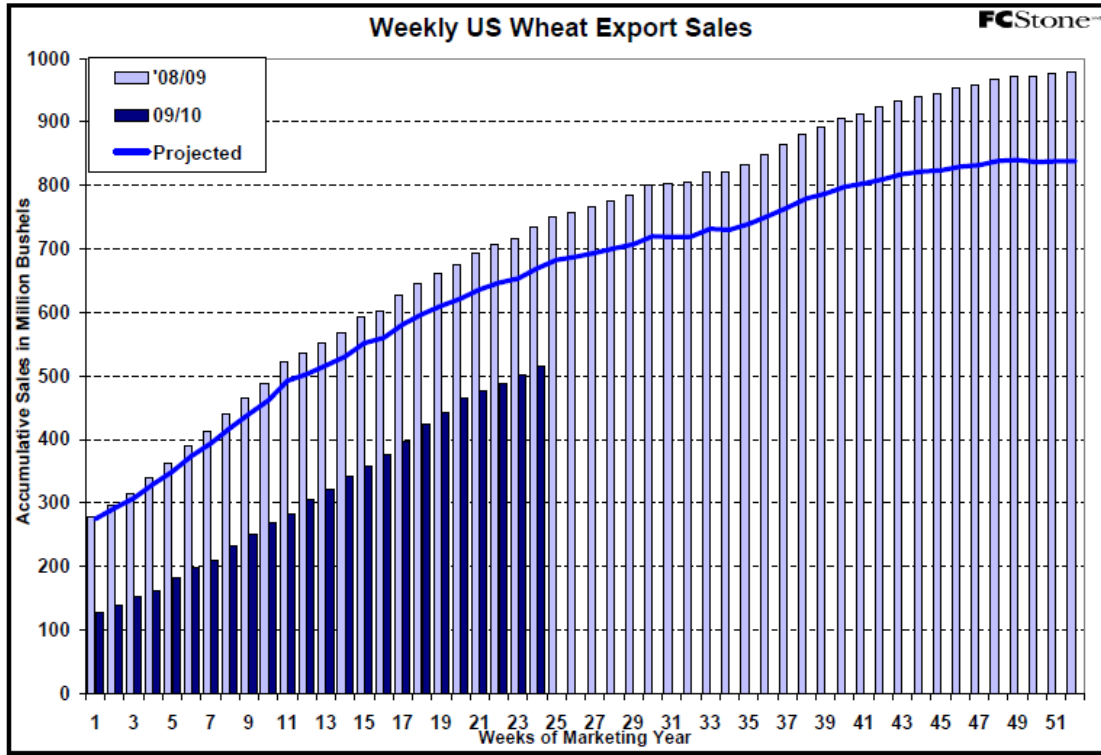
Wheat Sales: Net Difference Between 2008 & 2009 in Million Bushels



The information contained herein was obtained from sources believed to be reliable, but cannot be guaranteed. FC Stone may have contributed to this report. All examples given are strictly hypothetical and neither the information, nor any opinion expressed, constitutes a solicitation to market commodities or buy or sell futures or options on futures. Past financial performance and results are not indicative of, nor do they guarantee, future performance. Commodity marketing and trading has inherent risks. Trading and/or marketing decisions, as well as any gains or losses thereof, are the sole responsibility of the commodity owner, producer, and or account holder. Minnesota West Ag. Services, LLC, its principals and employees assume no liability for any use of any information contained herein. Reproduction without authorization is forbidden.



The information contained herein was obtained from sources believed to be reliable, but cannot be guaranteed. FC Stone may have contributed to this report. All examples given are strictly hypothetical and neither the information, nor any opinion expressed, constitutes a solicitation to market commodities or buy or sell futures or options on futures. Past financial performance and results are not indicative of, nor do they guarantee, future performance. Commodity marketing and trading has inherent risks. Trading and/or marketing decisions, as well as any gains or losses thereof, are the sole responsibility of the commodity owner, producer, and or account holder. Minnesota West Ag. Services, LLC, its principals and employees assume no liability for any use of any information contained herein. Reproduction without authorization is forbidden.



Estimated Funds Position

November 18, 2009

Funds	30-day	CORN			SOYBEANS			MEAL			OIL			CHI WHEAT			KC WHEAT		
		Daily	CFTC*	Net	Daily	CFTC*	Net	Daily	CFTC*	Net	Daily	CFTC*	Net	Daily	CFTC*	Net	Daily	CFTC*	Net
21-Oct	W	18,000		175,700	8,000		78,132	1,000		30,787	2,000		12,257	5,000		-10,681	1,000		20,258
22-Oct	TH	7,000		182,700	-3,000		75,132	0		30,787	-1,000		11,257	6,000		-4,681	0		20,258
23-Oct	F	-5,000		177,700	0		75,132	1,000		31,787	-1,000		10,257	-3,000		-7,681	0		20,258
26-Oct	M	-13,000		164,700	-7,000		68,132	-1,000		30,787	-1,000		9,257	-6,000		-13,681	-500		19,758
27-Oct	T	-8,000	160,870	156,700	-5,000	74,465	63,132	-1,000	26,134	29,787	-1,000	23,867	8,257	-5,000	-18,645	-18,681	0	20,373	19,758
28-Oct	W	-3,000		157,870	-3,000		71,465	0		26,134	-1,000		22,867	-4,000		-22,645	-400		19,973
29-Oct	TH	7,000		164,870	4,000		75,465	1,000		27,134	1,000		23,867	4,000		-18,645	300		20,273
30-Oct	F	-11,000		153,870	-4,000		71,465	0		27,134	-2,000		21,867	-3,000		-21,645	0		20,273
2-Nov	M	11,000		164,870	5,000		76,465	1,000		28,134	2,000		23,867	4,000		-17,645	300		20,573
3-Nov	T	12,000	171,606	176,870	5,000	91,472	81,465	2,000	30,752	30,134	1,000	16,817	24,867	-2,000	-22,532	-19,645	0	16,383	20,573
4-Nov	W	-6,000		165,606	-9,000		82,472	-1,000		29,752	0		16,817	-3,000		-25,532	0		16,383
5-Nov	TH	-7,000		158,606	-5,000		77,472	-1,000		28,752	-2,000		14,817	-3,000		-28,532	0		16,383
6-Nov	F	-7,000		151,606	-6,000		71,472	-1,000		27,752	-2,000		12,817	-4,000		-32,532	0		16,383
9-Nov	M	9,000		160,606	4,000		75,472	1,000		28,752	2,000		14,817	4,000		-28,532	500		16,883
10-Nov	T	7,000	174,572	167,606	-3,000	77,474	72,472	-1,000	27,292	27,752	-1,000	17,745	13,817	3,000	-24,292	-25,532	0	16,271	16,883
11-Nov	W	0		174,572	3,000		80,474	0		27,292	2,000		19,745	3,000		-21,292	0		16,271
12-Nov	TH	-5,000		169,572	4,000		84,474	2,000		29,292	0		19,745	1,000		-20,292	0		16,271
13-Nov	F	0		169,572	-1,000		83,474	0		29,292	1,000		20,745	3,000		-17,292	0		16,271
16-Nov	M	8,000		177,572	5,000		88,474	1,000		30,292	2,000		22,745	5,000		-12,292	500		16,771
17-Nov	T	0		177,572	6,000		94,474	2,000		32,292	2,000		24,745	5,000		-7,292	500		17,271
18-Nov	W	-8,000		169,572	-6,000		88,474	0		32,292	0		24,745	-4,000		-11,292	0		17,271

The information contained herein was obtained from sources believed to be reliable, but cannot be guaranteed. FC Stone may have contributed to this report. All examples given are strictly hypothetical and neither the information, nor any opinion expressed, constitutes a solicitation to market commodities or buy or sell futures or options on futures. Past financial performance and results are not indicative of, nor do they guarantee, future performance. Commodity marketing and trading has inherent risks. Trading and/or marketing decisions, as well as any gains or losses thereof, are the sole responsibility of the commodity owner, producer, and or account holder. Minnesota West Ag. Services, LLC, its principals and employees assume no liability for any use of any information contained herein. Reproduction without authorization is forbidden.