



# WEEKLY EXPORTS

David Scheibel

[david@mnwestag.com](mailto:david@mnwestag.com)

Toll Free 1-877-365-3744

[www.mnwestag.com](http://www.mnwestag.com)

## Exports & Fund Positions

Thursday, December 24, 2009

### WEEKLY EXPORT SALES

Week Ending	mil bu <u>Corn</u>		mil bu <u>Soybeans</u>		mil bu <u>Wheat</u>		000 tons <u>Soymeal</u>		000 tons <u>Soyoil</u>	
	2009-10	2010-11	2009-10	2010-11	2009-10	2010-11	2009-10	2010-11	2009-10	2010-11
10/15/09	9.2	0.6	36.3	0.0	23.1	2.1	115.7	0.0	23.3	0.0
10/22/09	14.5	0.0	25.4	0.0	12.8	0.7	176.2	3.2	9.2	0.0
10/29/09	22.2	0.3	19.2	0.1	10.5	0.0	116.7	0.0	6.9	0.0
11/05/09	19.2	0.0	46.8	0.0	15.1	0.0	224.1	0.1	5.8	0.0
11/12/09	13.9	0.0	49.6	0.0	13.3	0.0	357.5	10.3	12.4	0.0
11/19/09	48.2	15.9	41.7	0.0	12.9	1.6	225.2	1.4	19.2	0.0
11/26/09	25.9	0.0	26.6	0.3	14.4	0.0	107.4	6.5	19.0	0.0
12/03/09	33.4	0.0	34.1	-0.3	9.0	0.0	297.2	7.0	12.3	0.0
12/10/09	48.3	0.0	34.3	0.4	12.7	0.0	191.4	-7.0	20.7	0.0
12/17/09	62.7	0.0	43.9	6.4	8.1	0.0	254.2	0.0	46.7	0.0
10 Wk Ave	29.8	1.7	35.8	0.7	13.2	0.4	206.6	2.2	17.6	0.0

### TRADE ESTIMATES\*\*

	mil bu <u>Corn</u>	mil bu <u>Soybeans</u>	mil bu <u>Wheat</u>	000 tons <u>Soymeal</u>	000 tons <u>Soyoil</u>
12/17/09	21.7-29.5	34.9-45.9	12.9-20.2	175-300	15-25

\*\*Estimates include both old and new crop all commodities

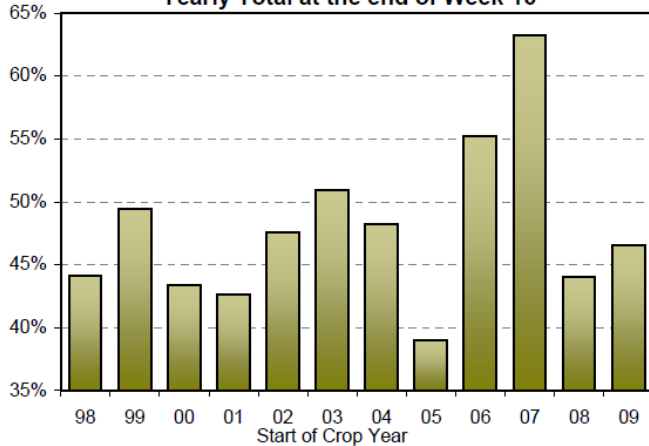
### EXPORT ANALYSIS

Week Ending	mil bu <u>Corn</u>	mil bu <u>Soybeans</u>	mil bu <u>Wheat</u>	000 tons <u>Soymeal</u>	000 tons <u>Soyoil</u>
Year to Date Sales	954	1130	573	5482	784
YTD Sales (Last Year)	818	729	785	3059	214
USDA Yearly Estimate**	2050	1340	875	8492	1470
Weeks Left in Crop Year	36	36	25	41	41
Needed to Reach USDA Total	1096	210	302	3010	686
Needed Weekly to Reach USDA Total	30.4	5.8	12.1	73.4	16.7

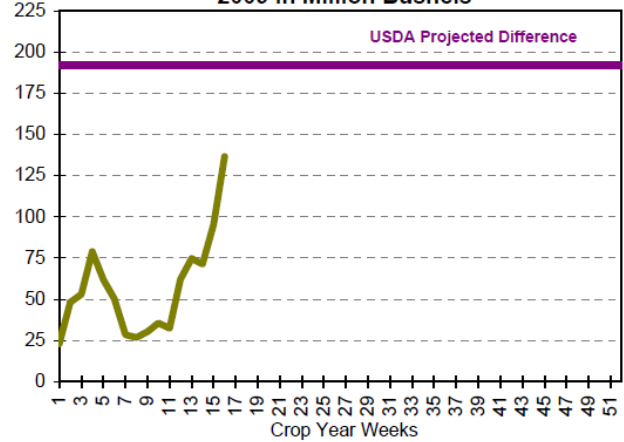
\*\* Meal projection does not include hulls

The information contained herein was obtained from sources believed to be reliable, but cannot be guaranteed. FC Stone may have contributed to this report. All examples given are strictly hypothetical and neither the information, nor any opinion expressed, constitutes a solicitation to market commodities or buy or sell futures or options on futures. Past financial performance and results are not indicative of, nor do they guarantee, future performance. Commodity marketing and trading has inherent risks. Trading and/or marketing decisions, as well as any gains or losses thereof, are the sole responsibility of the commodity owner, producer, and or account holder. Minnesota West Ag. Services, LLC, its principals and employees assume no liability for any use of any information contained herein. Reproduction without authorization is forbidden.

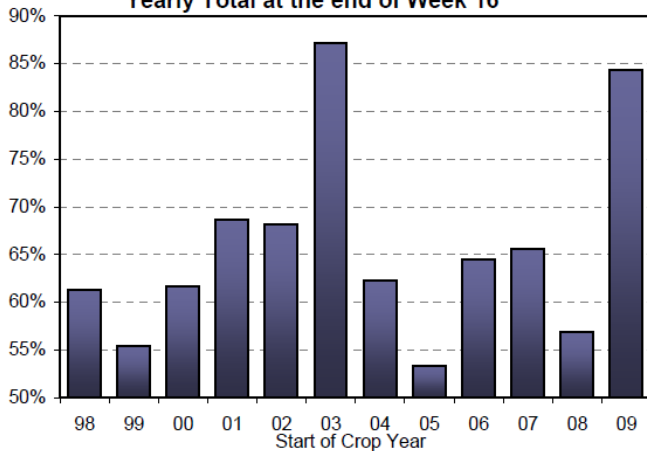
**Weekly Corn Export Sales as a Percent of Yearly Total at the end of Week 16**



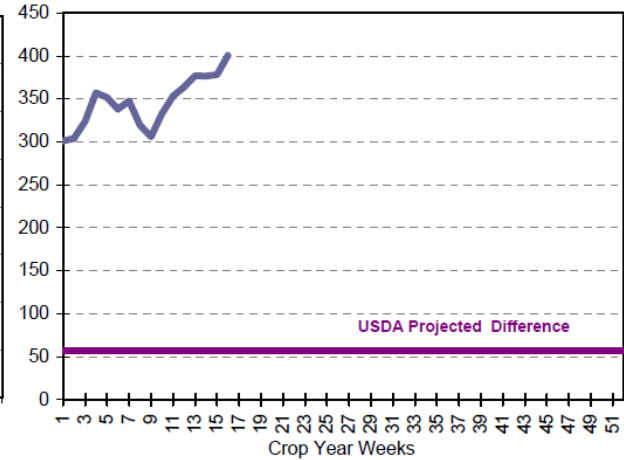
**Corn Sales: Net Difference Between 2008 & 2009 in Million Bushels**



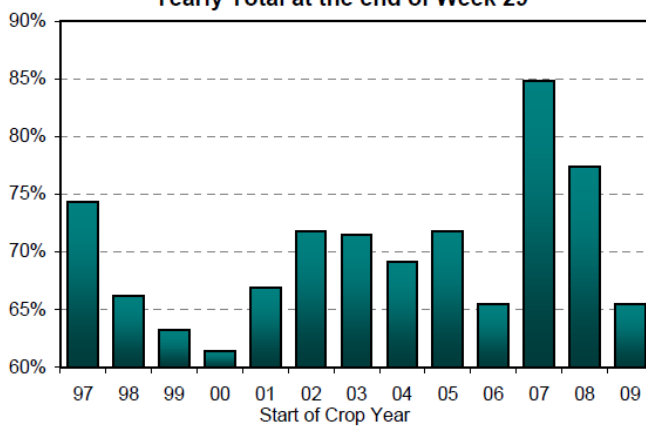
**Weekly Bean Export Sales as a Percent of Yearly Total at the end of Week 16**



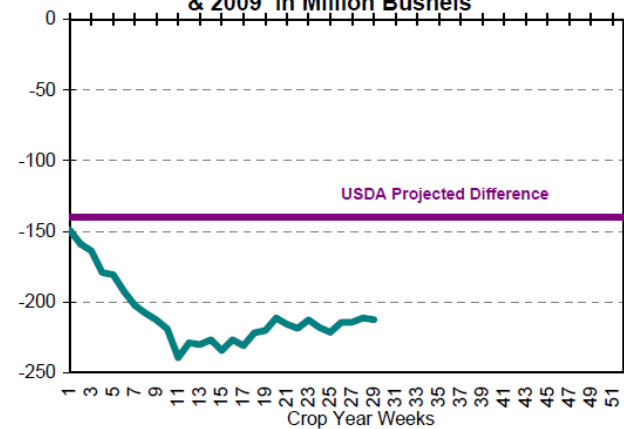
**Soybean Sales: Net Difference Between 2008 & 2009 in Million Bushels**



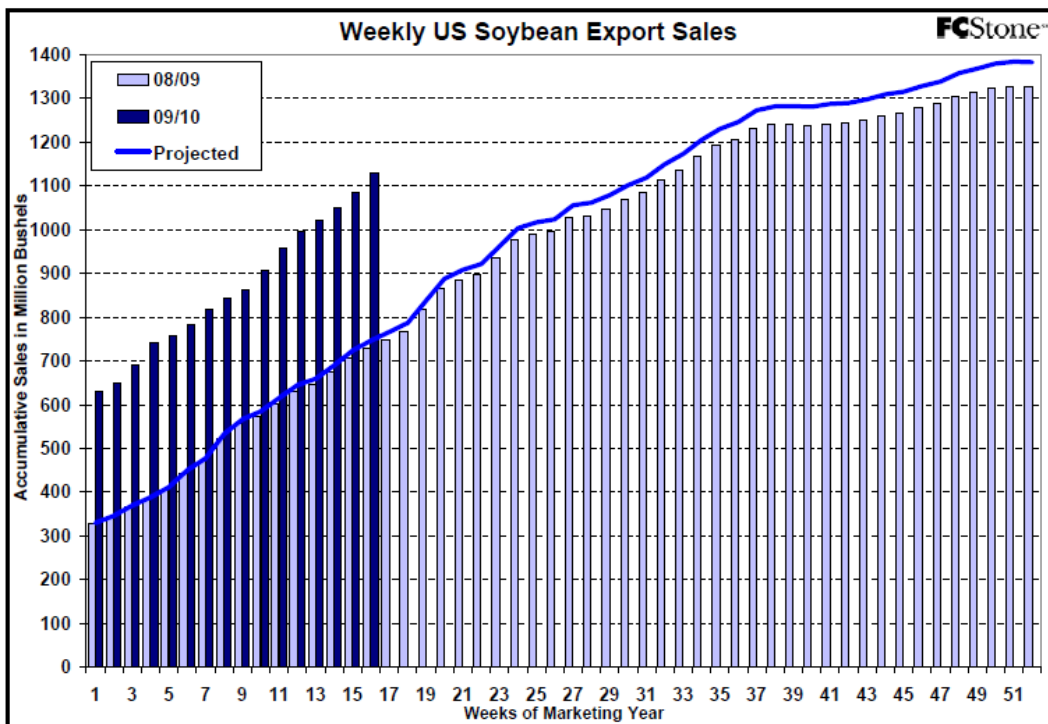
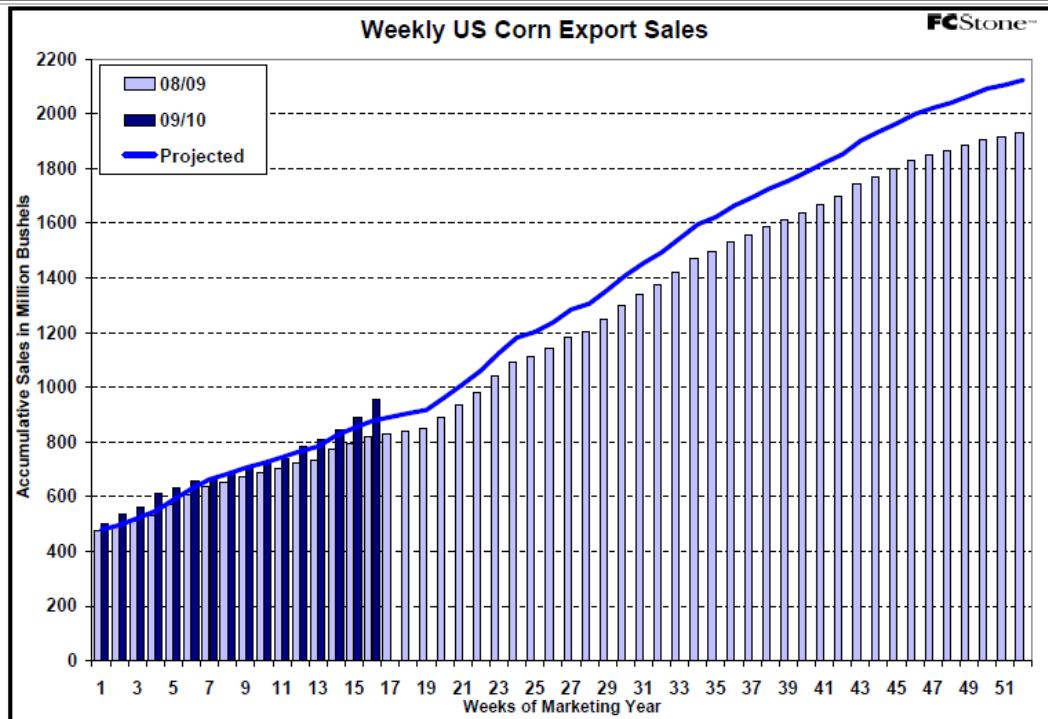
**Weekly Wheat Export Sales as a Percent of Yearly Total at the end of Week 29**



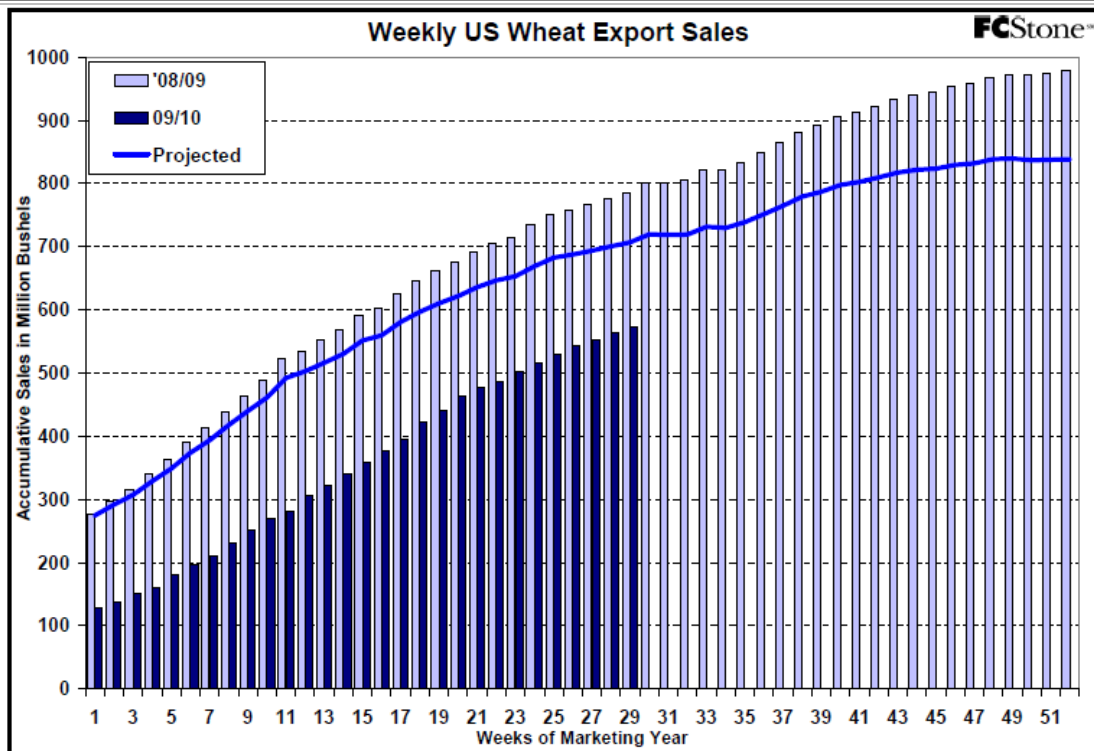
**Wheat Sales: Net Difference Between 2008 & 2009 in Million Bushels**



The information contained herein was obtained from sources believed to be reliable, but cannot be guaranteed. FC Stone may have contributed to this report. All examples given are strictly hypothetical and neither the information, nor any opinion expressed, constitutes a solicitation to market commodities or buy or sell futures or options on futures. Past financial performance and results are not indicative of, nor do they guarantee, future performance. Commodity marketing and trading has inherent risks. Trading and/or marketing decisions, as well as any gains or losses thereof, are the sole responsibility of the commodity owner, producer, and or account holder. Minnesota West Ag. Services, LLC, its principals and employees assume no liability for any use of any information contained herein. Reproduction without authorization is forbidden.



The information contained herein was obtained from sources believed to be reliable, but cannot be guaranteed. FC Stone may have contributed to this report. All examples given are strictly hypothetical and neither the information, nor any opinion expressed, constitutes a solicitation to market commodities or buy or sell futures or options on futures. Past financial performance and results are not indicative of, nor do they guarantee, future performance. Commodity marketing and trading has inherent risks. Trading and/or marketing decisions, as well as any gains or losses thereof, are the sole responsibility of the commodity owner, producer, and or account holder. Minnesota West Ag. Services, LLC, its principals and employees assume no liability for any use of any information contained herein. Reproduction without authorization is forbidden.



**Estimated Funds Position**

December 23, 2009

Funds	30-day	CORN			SOYBEANS			MEAL			OIL			CHI WHEAT			KC WHEAT		
		Daily	CFTC*	Net	Daily	CFTC*	Net	Daily	CFTC*	Net	Daily	CFTC*	Net	Daily	CFTC*	Net	Daily	CFTC*	Net
24-Nov	T	-9,000	198,438	158,697	3,000	111,410	93,111	-1,000	36,539	27,465	1,000	38,206	33,674	-4,000	-6,084	-33,073	-500	22,196	21,157
25-Nov	W	10,000		208,438	4,000		115,410	0		36,539	2,000		40,206	4,000		-2,084	400		22,596
27-Nov	F	6,000		214,438	-2,000		113,410	0		36,539	-2,000		38,206	-2,000		-4,084	0		22,596
30-Nov	M	10,000		224,438	5,000		118,410	0		36,539	1,000		39,206	5,000		916	500		23,096
1-Dec	T	-6,000	229,956	218,438	0	116,292	118,410	-1,000	37,675	35,539	2,000	38,944	41,206	-4,000	-1,693	-3,084	800	24,019	23,896
2-Dec	W	-9,000		220,956	-6,000		110,292	-2,000		35,675	-3,000		35,944	-3,000		-4,693	0		24,019
3-Dec	TH	-8,000		212,956	5,000		115,292	1,000		36,675	0		35,944	-2,000		-6,693	500		24,519
4-Dec	F	-13,000		199,956	-3,000		112,292	-1,000		35,675	0		35,944	-3,000		-9,693	0		24,519
7-Dec	M	-7,000		192,956	5,000		117,292	1,000		36,675	2,000		37,944	-3,000		-12,693	0		24,519
8-Dec	T	4,000	194,766	196,956	-5,000	116,917	112,292	1,000	33,036	37,675	-2,000	38,947	35,944	-2,000	-967	-14,693	0	21,706	24,519
9-Dec	W	-3,000		191,766	-7,000		109,917	-2,000		31,036	-3,000		35,947	-3,000		-3,967	0		21,706
10-Dec	TH	11,000		202,766	-2,000		107,917	-1,000		30,036	2,000		37,947	2,000		-1,967	0		21,706
11-Dec	F	11,000		213,766	6,000		113,917	1,000		31,036	1,000		38,947	2,000		33	500		22,206
14-Dec	M	3,000		216,766	6,000		119,917	2,000		33,036	1,000		39,947	3,000		3,033	0		22,206
15-Dec	T	-2,000	212,961	214,766	4,000	119,467	123,917	1,000	34,847	34,036	1,000	36,272	40,947	-2,000	-7,112	1,033	200	18,664	22,406
16-Dec	W	3,000		215,961	4,000		123,467	0		34,847	2,000		38,272	0		-7,112	0		18,664
17-Dec	TH	-9,000		206,961	-6,000		117,467	-2,000		32,847	-2,000		35,272	-4,000		-11,112	-300		18,364
18-Dec	F	2,000		208,961	-4,000		113,467	-1,000		31,847	-2,000		33,272	3,000		-8,112	500		18,864
21-Dec	M	4,000		212,961	-4,000		109,467	-1,000		30,847	0		33,272	-2,000		-10,112	0		18,864
22-Dec	T	-2,000		210,961	-4,000		105,467	-1,000		29,847	-2,000		31,272	1,000		-9,112	0		18,864
23-Dec	W	2,000		212,961	3,000		108,467	1,000		30,847	0		31,272	1,000		-8,112	0		18,864

The information contained herein was obtained from sources believed to be reliable, but cannot be guaranteed. FC Stone may have contributed to this report. All examples given are strictly hypothetical and neither the information, nor any opinion expressed, constitutes a solicitation to market commodities or buy or sell futures or options on futures. Past financial performance and results are not indicative of, nor do they guarantee, future performance. Commodity marketing and trading has inherent risks. Trading and/or marketing decisions, as well as any gains or losses thereof, are the sole responsibility of the commodity owner, producer, and or account holder. Minnesota West Ag. Services, LLC, its principals and employees assume no liability for any use of any information contained herein. Reproduction without authorization is forbidden.