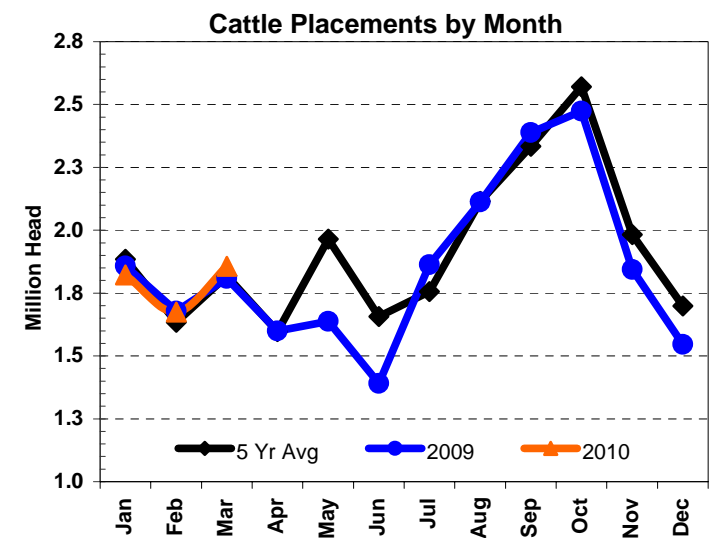
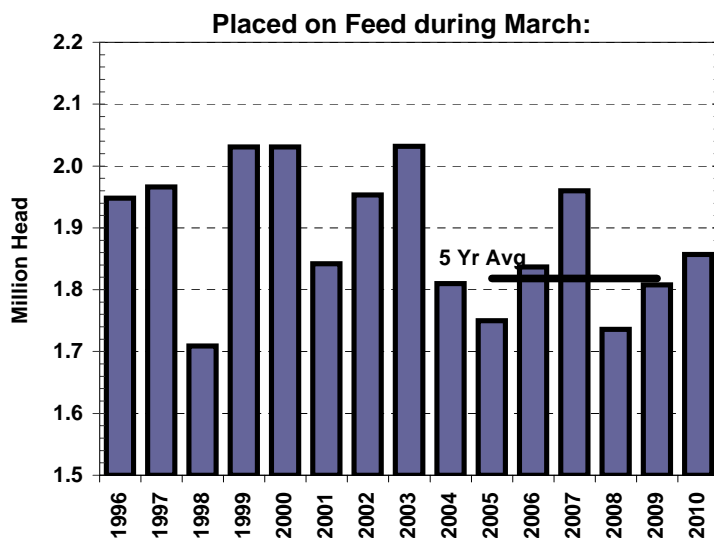
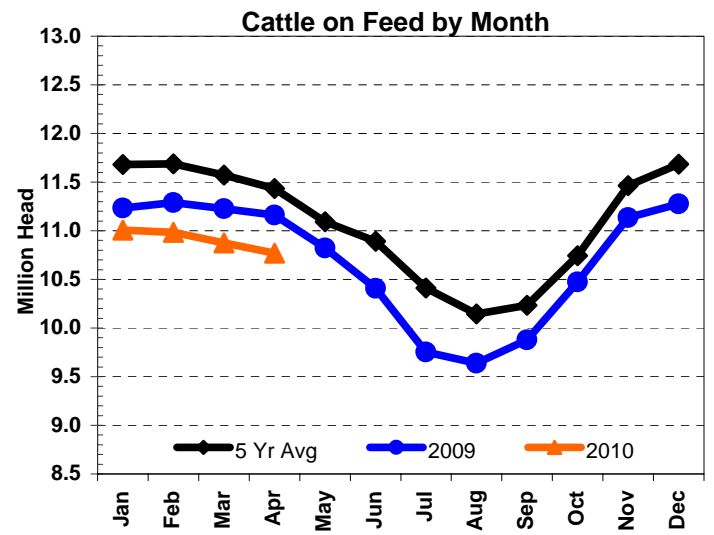
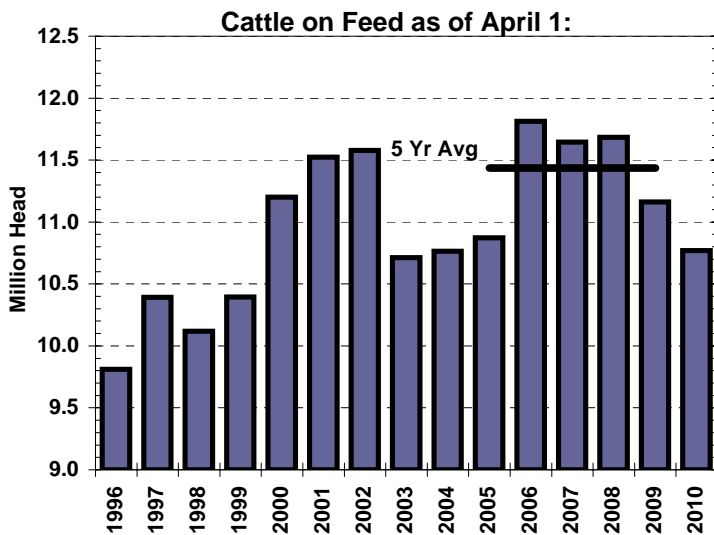


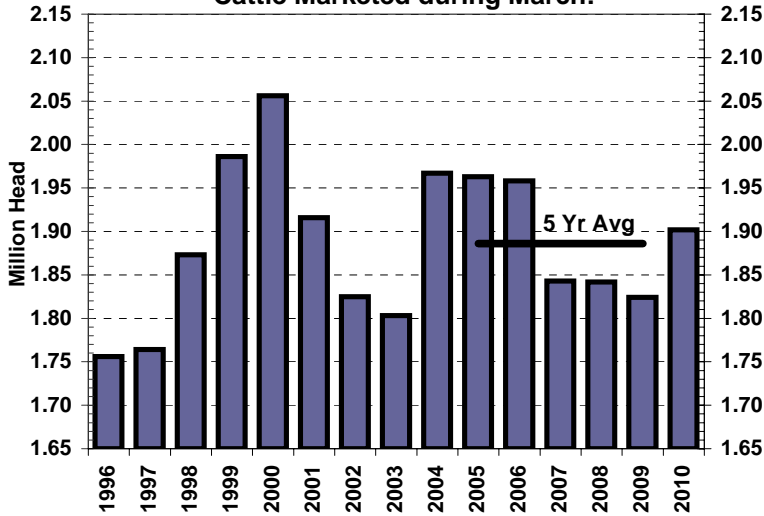
**Feedlots with Capacity of 1,000+ Head
United States**

U.S.	BY PERCENTAGES (vs Last Year)			BY NUMBERS (Million Head)		
	USDA Actual	Trade Estimate	Estimate Range	April 1 2010	April 1 2009	April 1 5 Yr Avg
Cattle on Feed as of April 1:	96.5%	97.1	96.3-98.6	10.769	11.162	11.435
Placed on Feed during March:	102.7%	106.6	102.2-111.0	1.857	1.808	1.818
Cattle Marketed during March:	104.3%	104.9	101.7-106.5	1.902	1.824	1.886

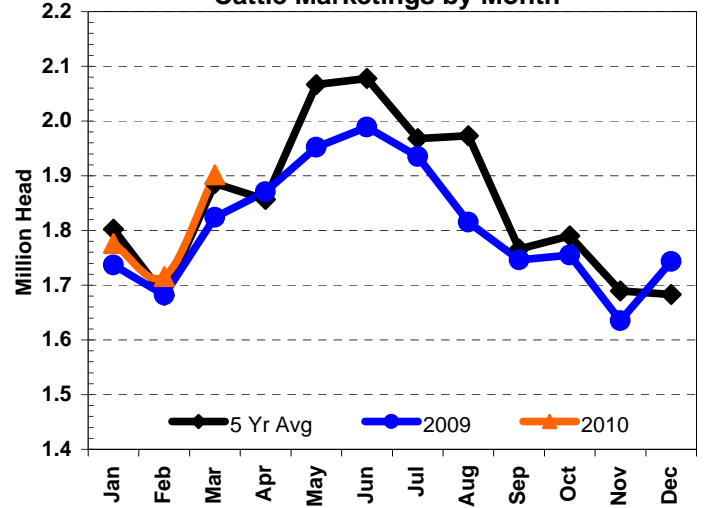


Commodity trading is risky and FCStone Group Inc. assumes no liability for the use of any information contained herein. Past financial results are not necessarily indicative of future performance. Information contained herein was obtained from sources believed to be reliable, but is not guaranteed as to its accuracy. Any examples given are strictly hypothetical and no representation is being made that any person will or is likely to achieve profits or losses similar to those examples. Neither the information, nor any opinion expressed, constitutes a solicitation to buy or sell futures or options on futures contracts, or OTC products. Reproduction without authorization is forbidden. All rights reserved.

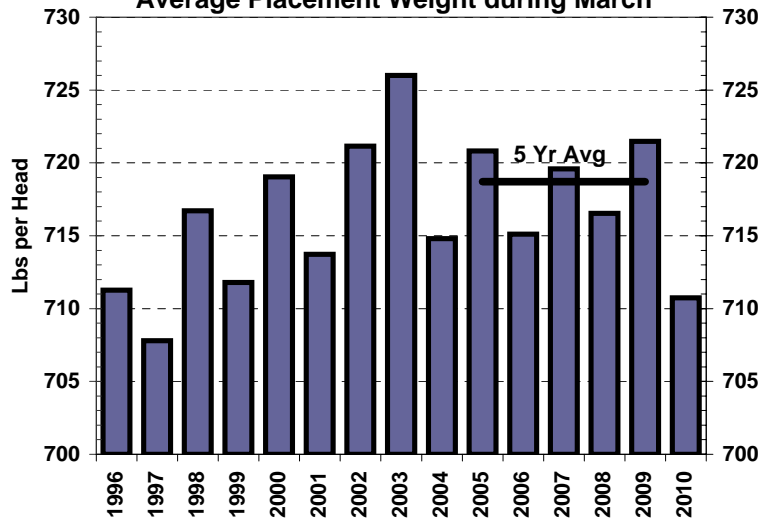
Cattle Marketed during March:



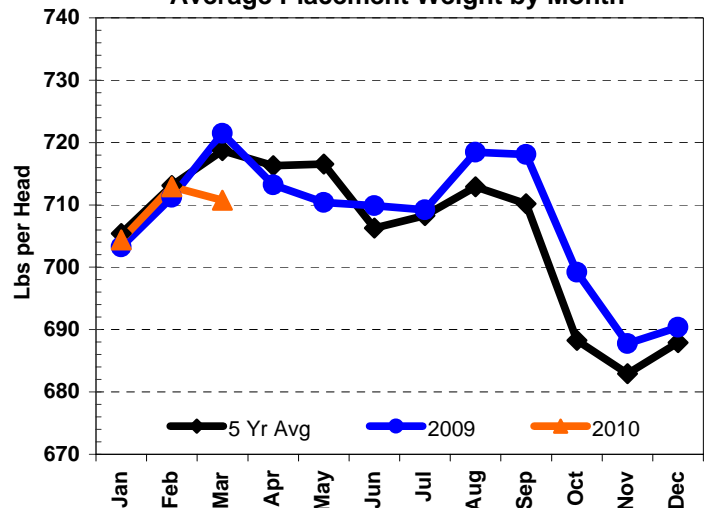
Cattle Marketings by Month



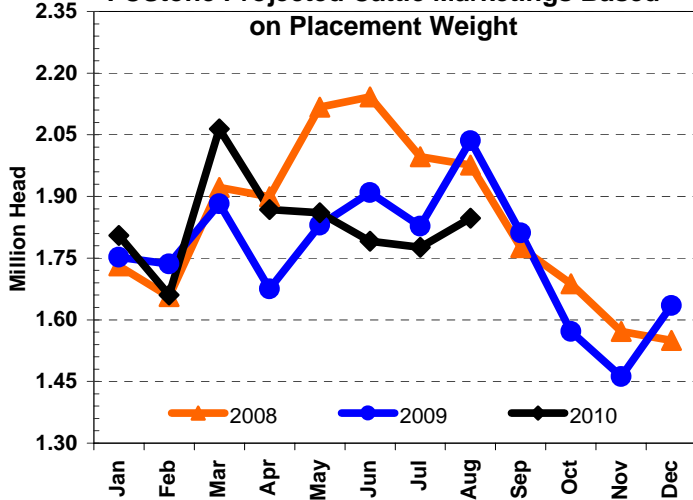
Average Placement Weight during March



Average Placement Weight by Month



FCStone Projected Cattle Marketings Based on Placement Weight



Actual USDA Marketings vs FCStone Projected Marketings

